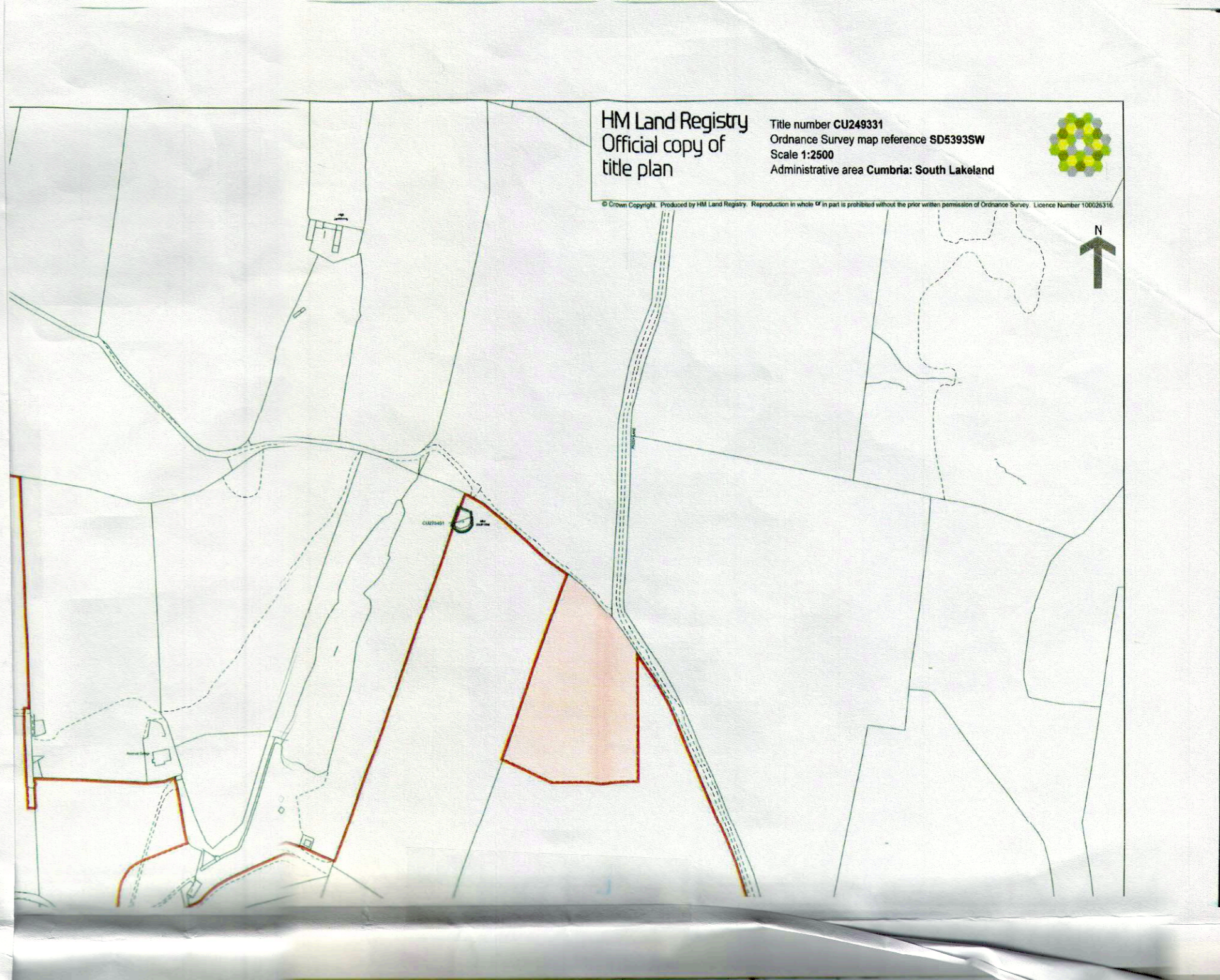


This official copy issued on 27 March 2020 shows the state of this title plan on 27 March 2020 at 14:10:20.
 It is admissible in evidence to the same extent as the original (s.67 Land Registration Act 2002).
 This title plan shows the general position, not the exact line, of the boundaries. It may be subject to distortions in scale. Measurements scaled from this plan may not match measurements between the same points on the ground.
 This title is dealt with by HM Land Registry, Durham Office.



HM Land Registry
 Official copy of
 title plan

Title number CU249331
 Ordnance Survey map reference SD5393SW
 Scale 1:2500
 Administrative area Cumbria: South Lakeland

© Crown Copyright. Produced by HM Land Registry. Reproduction in whole or in part is prohibited without the prior written permission of Ordnance Survey. Licence Number 100026316.

