

Landscape Character
Classification (1995)

Map 7

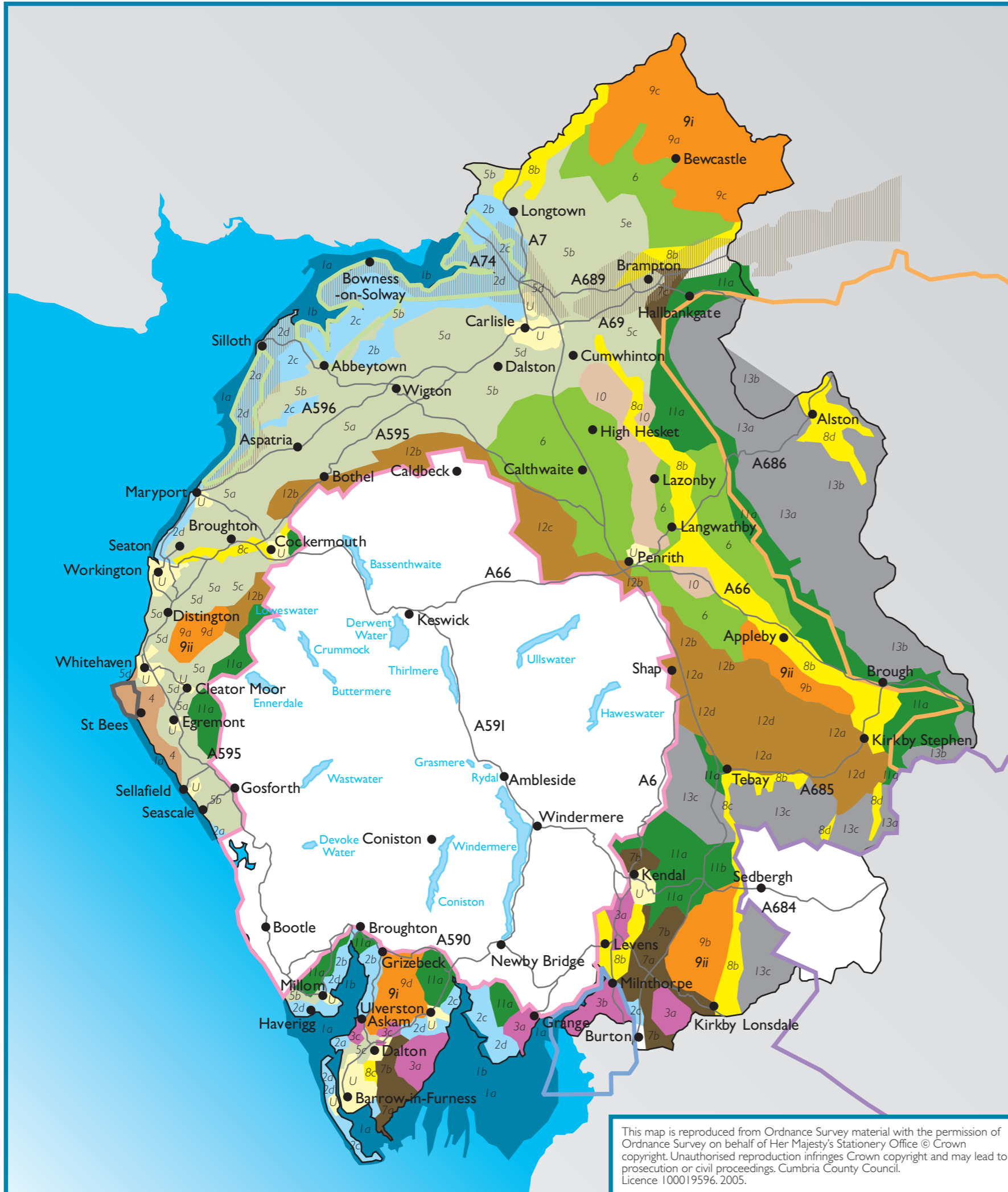
This map should be read in conjunction with the Landscape Capacity Assessment Findings in Part 2. When considering the potential acceptability of a scheme all other planning issues set out in the SPD must be considered. This map is indicative only.

Key

- Lake District National Park
- Yorkshire Dales National Park
- Solway Coast AONB
- North Pennines AONB
- Arnside and Silverdale AONB
- Frontiers of the Roman Empire:
Hadrian's Wall - visual envelope
- St Bees Heritage Coastline
- Cumbria County Council Boundary

Cumbria Landscape Classification

- Type 1 - Estuary and Marsh
- Type 2 - Coastal Margins
- Type 3 - Coastal Limestone
- Type 4 - Coastal Sandstone
- Type 5 - Lowland
- Type 6 - Intermediate Land
- Type 7 - Drumlins
- Type 8 - Main Valleys
- Type 9 - Intermediate Moorland Plateau
- Type 10 - Sandstone Ridge
- Type 11 - Upland Fringes
- Type 12 - Higher Limestone
- Type 13 - Fells and Scarp
- Type 14(U) - Urban Area



Landscape Character Type and Sub Types

- | | | |
|--------------------------------|---|--------------------------------------|
| 1 Estuary and Marsh | 8 Main Valleys | 12 Higher Limestone |
| 1a Intertidal Flats | 8a Gorges | 12a Limestone Farmland |
| 1b Coastal Marsh | 8b Broad Valleys | 12b Rolling Fringe |
| 2 Coastal Margins | 8c Valley Corridors | 12c Limestone Foothills |
| 2a Dunes and Beaches | 8d Dales | 12d Moorland and Commons |
| 2b Coastal Mosses | 9 Intermediate Moorland and Plateau | 13 Fells and Scarps |
| 2c Coastal Plain | 9i Intermediate Moorland | 13a Scarps |
| 3 Coastal Limestone | 9a Open Moorlands (Bewcastle Fells) | 13b Moorland, High Plateau |
| 3a Open Farmland and Pavements | 9c Forests (Kershope and Spadeadam) | 13c Fells |
| 3b Wooded Hills and Pavements | 9d Ridges (Furness) | 14(U) Urban Areas and Fringes |
| 3c Disturbed Areas | 9ii Moorland Hill and Low Plateaus | 2d Coastal Urban Fringe |
| 4 Coastal Sandstone | 9a Open Moorlands (West Cumbria) | 5d Urban Fringe |
| 5 Lowland | 9b Rolling Farmland and Heath (Eden and South Lakeland) | |
| 5a Ridge and Valley | 9d Ridges (West Cumbria) | |
| 5b Low Farmland | 10 Sandstone Ridge | |
| 5c Rolling Lowland | 11 Upland Fringes | |
| 5d Drained Mosses | 11a Foothills | |
| 6 Intermediate Land | 11b Low Fells | |
| 7 Drumlins | | |
| 7a Low Drumlins | | |
| 7b Drumlin Field | | |
| 7c Sandy Knolls and Ridges | | |

This map is reproduced from Ordnance Survey material with the permission of Ordnance Survey on behalf of Her Majesty's Stationery Office © Crown copyright. Unauthorised reproduction infringes Crown copyright and may lead to prosecution or civil proceedings. Cumbria County Council. Licence 100019596. 2005.

