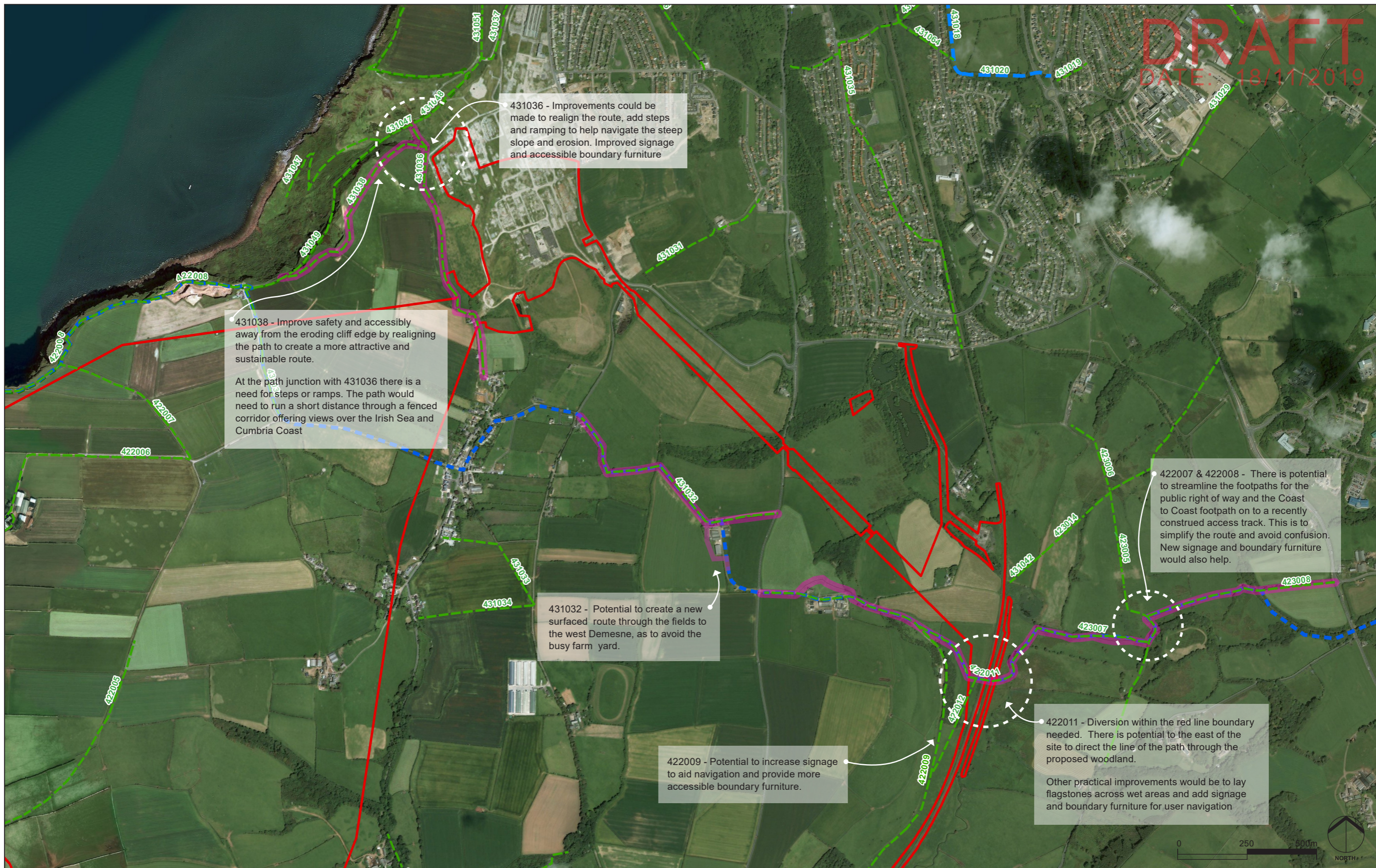


**DRAFT**  
DATE: 18/11/2019



431038 - Improve safety and accessibility away from the eroding cliff edge by realigning the path to create a more attractive and sustainable route.  
At the path junction with 431036 there is a need for steps or ramps. The path would need to run a short distance through a fenced corridor offering views over the Irish Sea and Cumbria Coast

431036 - Improvements could be made to realign the route, add steps and ramping to help navigate the steep slope and erosion. Improved signage and accessible boundary furniture

431032 - Potential to create a new surfaced route through the fields to the west Demesne, as to avoid the busy farm yard.

422009 - Potential to increase signage to aid navigation and provide more accessible boundary furniture.

422007 & 422008 - There is potential to streamline the footpaths for the public right of way and the Coast to Coast footpath on to a recently construed access track. This is to simplify the route and avoid confusion. New signage and boundary furniture would also help.

422011 - Diversion within the red line boundary needed. There is potential to the east of the site to direct the line of the path through the proposed woodland.  
Other practical improvements would be to lay flagstones across wet areas and add signage and boundary furniture for user navigation



	Proposed site boundary		Coast to Coast Route
	Potential footpath improvement areas		
	Public Right of Way		



<b>Proposed Footpath Improvements 1:12500</b>			<b>WCM/s106/001 S106 Agreement Plan 3</b>	
Date: NOV 2019	By: JD/LD	Ckd: NE	Paper Size: A3	Rev :A

WCM-049bK Footpath Improvements - Rev B.indd