

## Detail Report: Local Nature Recovery Strategy Event 2 4<sup>th</sup> February 2021

### Summary

---

DEFRA is funding five Local Nature Recovery Strategy (LNRS) Pilots to inform national environment policy. Underpinned by the 25 Year Environment Plan (2018) and the Environment Plan 2020, the aim of the LNRS pilots is to guide delivery of national policy objectives at a local level. This includes prioritisation based on spatial factors and wider public benefits.

Cumbria County Council, together with other members of the Pilot Area Team (PAT), convened an initial stakeholder engagement event in early November 2020. Stakeholder suggestions for potential nature recovery outcomes from this meeting were synthesised with outcomes from existing strategy and policy documents to produce a series of Outcome Tables, organised by Natural Character Area.

At this follow-up event held on 4<sup>th</sup> February 2021, these outcomes were presented to the stakeholders for their feedback. **Objectives** of Event 2 included:

1. To update stakeholders on progress with the LNRS since the stakeholder event in November, and how their input has been taken on board.
2. To help stakeholders input effectively to the proposed outcomes before the 'feedback period' deadline.
3. To discuss the outcomes that are emerging, including identifying gaps.
4. To start to identify possible measures and specific locations to deliver the outcomes.

All materials were published in advance on an [online whiteboard](#) with clear instructions on how to comment during the fortnight-long consultation period.

**Briefing.** Members of the PAT presented an overview of the LNRS pilots, explained the work that had been carried out since the last meeting, and explained the use of Natural Character Areas as a way of spatially organising the outcomes. The stakeholders were guided around the detailed Outcome Tables on the whiteboard. It was explained that there would only be time to *start* the process of reviewing them at this event – participants were asked to come back to the whiteboard after the meeting to feed back fully on the content before the deadline on the 15<sup>th</sup> February 2021.

**Nature outcomes.** There were two discussion group sessions, where participants were split into groups to start considering the Outcome Tables.

1. Cross-cutting themes. Stakeholders were divided randomly between the cross-cutting theme tables to consider the question "Are there any outcomes we haven't covered?"
2. Habitat themes. Stakeholders chose which habitat they focused on for this discussion, considering the questions "What specific 'boots on the ground' measures could deliver these outcomes?" and "At which specific locations could these measures be best implemented?"

At the end of the meeting, participants were reminded to continue to feed back on the tables until the 15<sup>th</sup> February 2021.

**Evaluation.** Rating the usefulness of the meeting on a five point scale, 93% of participants said it was Very Useful or Useful.

## Introduction

---

This report is a brief overview account of an online meeting held on 4<sup>th</sup> February 2021, discussing the Cumbria Local Nature Recovery Strategy. The report was compiled by 3KQ, the independent facilitators running the meeting. The report is a combination of:

- An outline of the meeting content.
- Questions asked live by the participants during the meeting.
- Edited 'chat' contributions from participants during the meeting.

Due to the nature of this meeting, most of the stakeholder input was recorded on the online whiteboard and will be ultimately be integrated into the LNRS Outcome Tables and Strategy Report. The full content is not recorded here as the process will be ongoing until the 15<sup>th</sup> February, and will be collated and analysed by members of the PAT.

A full list of participants in the meeting is included in the Appendix, as well as other organisations invited.

# 1. Briefing on the Strategy and progress to date

The Pilot Area Team presented the following slides.

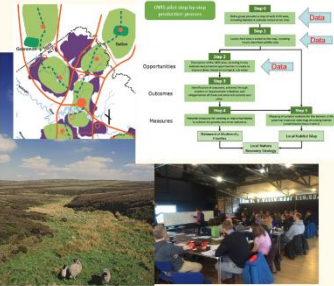
## What are Local Nature Recovery Strategies ?

New system of spatial strategies for nature, covering the whole of England.

- Map the most valuable existing areas for nature;
- Agree priorities for nature's recovery.
- Map locations for creating or improving habitat for nature and nature based solutions.

Shared plans, to drive more coordinated, practical and focussed action for nature recovery.

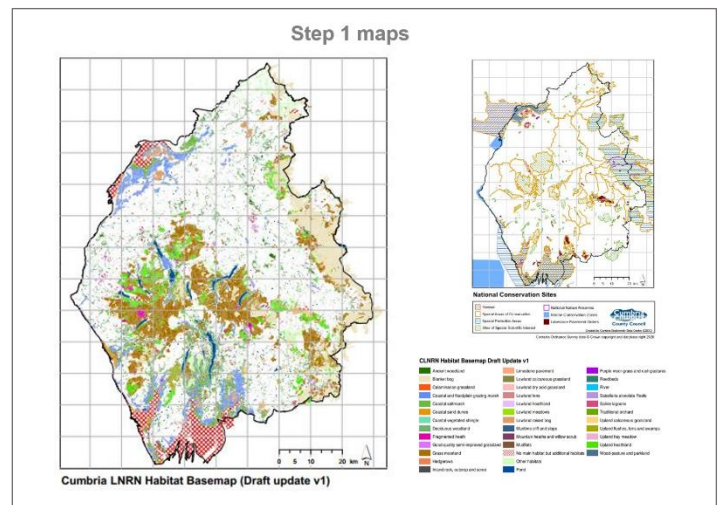
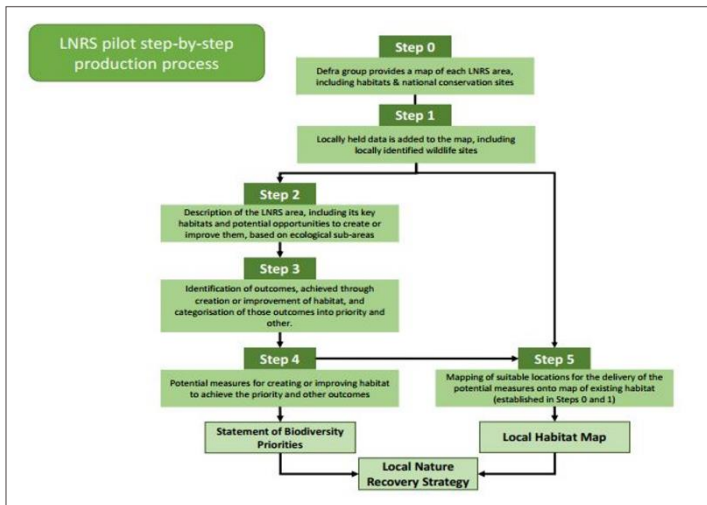
Framework for Nature Recovery Network



## Aligning and focussing effort

Identifying win-wins – nature recovery and nature based solutions


- Locations for Biodiversity Net Gain
- Direction for Green Infrastructure
- Informing Local Plans
- Informing Public Bodies in duties for biodiversity
- Guiding E.L.M activity
- Directing Government and arms-length body funding
- Identifying locations for private investment
- Providing focus for nature recovery projects




## Step 2 Description

Cumbria County Council

Step 2 – Narrative Description for the Cumbria Local Nature Recovery Strategy Pilot – December 2020



Produced in partnership with the Pilot Area Team



## Next Steps

- Feedback on workshop material – by 15<sup>th</sup> February
- On-line survey of priorities – late February
- Event 3 – review of draft strategy – mid March
- Submission of draft strategy to Defra – end of March



An example of a cross-cutting theme Outcome Table (Habitat mosaics and networks), and a habitat-based Outcome Table (Rivers and Streams), as displayed on the whiteboard, are shown below:

**Habitat mosaics and networks**

Outcome Category	Outcome	5	6	7	8	9	10	11	17	18	19	20	21
<b>HABITAT MOSAICS AND NETWORKS</b>	<b>National Character Area – highlights shows where outcomes have been identified from plans and stakeholder inputs so far)</b>												
	<b>Dynamic upland/moorland mosaics of different habitats (and at different scales) established (providing different food, shelter and nesting areas for common and rare species)</b>												
	<b>Mosaics (mixtures) of different habitat types provide a greater proportion of different wildlife species' lifecycle needs (e.g. a bird may feed on one habitat but use different areas for nesting/roosting). As well as different habitat types, wildlife also needs different habitat structure (e.g. different heights/denseness/age) for example spiders may need open ground to hunt but grass tussocks to nest in.</b>												
	<b>Dynamic wetland mosaics of different habitats (and at different scales) established (providing different food, shelter and nesting areas for common and rare species)</b>												
	<b>Dynamic coastlines created supporting a diverse mosaic of habitats and species (providing different food, shelter and nesting areas for common and rare species)</b>												
	<b>Dynamic mosaics of different habitats (and at different scales) established (providing different food, shelter and nesting areas for common and rare species)</b>												
	<b>A resilient network of treescape, (including native woodland, wood pasture, parkland, coppice, scrub, field trees and pollards, hedgerows and hedgerow trees)</b>												
	<b>Resilient and joined up Nature Recovery Networks enabling species to move around Cumbria (as well as creating migration corridors for key species)</b>												
	<b>Habitats need to be expanded and then connected better together to allow wildlife to move to different areas for feeding/nesting, to move to different areas when their existing habitat is damaged, and to move around the country in response to climate or other environmental changes.</b>												
	<b>Creation of habitat stepping stones and corridors (to help species move between existing habitats)</b>												
	<b>Some wildlife can only move relatively short distances for food, or to seek new sites for breeding. Without more 'stepping stones' or corridors of habitat many individuals</b>												

**Rivers and Streams**

Outcome Category	Outcome	5	6	7	8	9	10	11	17	18	19	20	21
<b>RIVERS AND STREAMS</b>	<b>National Character Area – highlights shows where outcomes have been identified from plans and stakeholder inputs so far)</b>												
<b>Habitat Expansion</b>	<b>More trees and shrub growth along river and streams (cooling water, providing shade, habitat for birds, mammals etc.)</b>												
	<b>Tree and shrub growth alongside rivers and streams provides habitat for a number of different birds and mammals, as well as providing corridors through the landscape for wildlife to move around. It also helps to protect the banks from erosion (and more sediment entering the watercourse) and provides shaded areas, and a cooling effect on the water.</b>												
	<b>New or expanded reedbeds</b>												
	<b>Reedbeds are a rare habitat type in Cumbria and support a range of different bird and amphibian species. They also have a role to play in natural flood management and reducing sedimentation of lakes.</b>												
	<b>New floodplain meadows</b>												
	<b>Wildflower-rich floodplain meadows are rare in Cumbria (and the UK). They support a unique mix of wildflower and invertebrate species as well as playing a role in natural flood management.</b>												
	<b>Widespread small wetland habitat features created (ponds, muddy scrapes, seasonally wet areas etc.) on river floodplains</b>												
	<b>These habitats provide vital habitat for a wide range of invertebrates including hoverflies, dragonflies and snails. They also provide breeding areas for amphibians and feeding areas for birds and play a role in holding back flood waters (acting as 'sponges' for flood water).</b>												
<b>Habitat Restoration</b>	<b>More natural (and dynamic) water courses which are better connected to their floodplain and associated wetland habitats (creating a wider range of riverine and wetland habitats which in turn will help a greater range of species)</b>												

### Questions of clarification

**Q: With the prospect of Cumbria being re-organised into different local authority boundaries, will this have an impact on the delivery of this strategy?**

**A:** Cumbria is very fortunate to have the Arnsdale and Silverdale and North Pennines AONBs involved in the pilot - both cross county boundaries and can help feed in solutions for cross-boundary working. We also have the Yorkshire Dales National Park crossing the county boundary. We are also working closely with Northumberland, another pilot area for the LNRS.

## Answers in chat:

*Keith Forestry Commission NW & WM (PAT) to Everyone : Defra will have the task of covering England with LNRS's so it's a good question that the pilot areas should help answer*

*From Hannah Hyland - EA to Everyone : The Environment Bill requires a "Responsible Authority" for the LNRS and whilst it is expected these will be County Councils it is not defined so if a specific geography works better than this will be considered - where suitable multiple County Councils could work together as the Responsible Authority.*

### **Q: Will we have a wider opportunity to comment in specific detail on the proposed outcomes?**

A: Yes. This is still a pilot, and there will be opportunities throughout the process to feed in specific comments as we work through the steps. The feedback period for this part of the pilot runs until the 15<sup>th</sup>, and if you need the material in a different format, just email [rachel.whaley@cumbria.gov.uk](mailto:rachel.whaley@cumbria.gov.uk)

### **Q: Should we consider people more? And the question of Nature Recovery vs Natural Capital approaches?**

A: You will see that both approaches are covered on the outcome tables – you will probably find more of the people-oriented outcomes in the cross-cutting theme tables, and the nature-based outcomes in the habitat tables.

### **Q: There is not much time to feed back on all this material, my colleagues would appreciate the chance to input into this – is there a way to make that happen?**

A: We are setting up duplicate whiteboards for organisations to gather comment internally and feed back to the PAT, please contact [rachel.whaley@cumbria.gov.uk](mailto:rachel.whaley@cumbria.gov.uk) to find out more

### **Comments and suggestions made verbally by participants**

- Management is very important, not just creation and restoration
- It is important not to overlook smaller habitats within larger groupings, especially rare habitats that are not well represented in the county
- No mention of conservation grazing in the grassland table?
- Limestone should include scree and rocky habitats
- For Lakes & Tarns, Rivers & Streams, management is the most important – creation is not really applicable.
- It is important not to silo habitats as many aspects are interdependent and interconnected – particularly in relation to species, for example where not to linkup/create woodland at the detriment of wading birds.
- How can we reference the impact of people on the natural environment? The problems of post-lockdown visitors to the Lake District were particularly marked, is this something we should consider in the strategy? (*Ian has set up an SLDC/LDNPA group addressing these issues*)

Comments in “Chat” on impact of people on nature

*From Jane CLA to Everyone : The CLA has been lobbying Gov for the inclusion of the Countryside Code being taught in schools.*

*From Kate Tobin FC (PAT) to Everyone : Good points from Robert and Ian. An outcome might be "protect the habitat from damage due to recreation" and a measure might be "provision of surfaced routes" or "increase interpretation to change behaviour" . This might help to prepare for funding to come from Biodiversity Net Gain or other sources.*

*From Raegan Workington Nature Partnership to Everyone : Ian, can this extend outside the boundaries of "the Lake District" I would be keen to work with you on all these matters in Workington*

*From Hannah Field FFCC to Everyone : is there a possibility for more employment opportunities to get more "caretakers of the Lakes" to support protection and education*

*From Clair SFP to Everyone : Need an action around educating the public about how to behave in the countryside*

### **Questions and comments in the "Chat" facility:**

**Q: Marion - RHT to Everyone : Does each interested organisation need to register to be involved in helping with practical work on the agreed outcomes?**

*Not answered in chat*

**Q: From Olivia Floodplain Meadow Partnership to Everyone : Is the expectation that this LNRS will be a key document to refer to in terms of funding bids, ELM applications, WISER etc?**

*From Kath Milnes, NE (PAT) to Everyone : Yes. It is likely to be a key document for funding bids in future*

**Q: From Olivia Floodplain Meadow Partnership to Everyone : Thanks - is there a set period for when this report gets revised? Every 3-5 years? and what happens with monitoring?**

*From Kath Milnes, NE (PAT) to Everyone : Hi Olivia. There will be a review period - not sure if its been set, but possibly 5 years. monitoring and reporting will also be important.*

*From Kath Milnes, NE (PAT) to Everyone : How monitoring and reporting will be done is a key question to explore*

*From Rachel Whaley CCC - PAT to Everyone : we can put slides etc up on county council website after for people to access*

*From Frank - Watchtree Nature Reserve & Thornhill Meadows Trust to Everyone : I feel there should be a species focus to eg Willow Tit, Red Squirrel*

From Kath Milnes, NE (PAT) to Everyone : There is no specific LNRS money. However, the idea of the LNRS is to direct different funding streams (public, private etc) to enable delivery of the strategy (answer to question on whiteboard from Frank Mawby).

From Steve Trotter (CWT) PAT to Everyone : need to be careful about who comments further and, that in contentious areas its a balanced group of people e.g. not dominated by sectors and/or vested interests

From Hannah Field FFCC to Everyone : Agree with Steve - facilitation and making sure there is balance

From Martin-Cumbria County Council to Everyone : Agreed Steve T = it's balance across public, nature, ones interest, sector needs - who would/should be the arbiter of "fairness"?

From Frank - Watchtree Nature Reserve & Thornhill Meadows Trust to Everyone : The Dasgupta review may have a significant impact on government finance and spending. it covers everything we are discussing very good read

From Carol Moffat Farmer Network to Everyone : The whole project needs to be deliverable and working closely with farmers and landowners and people is key

From Hannah Field FFCC to Everyone : Linked to Carol's comment - is there any mapping planned around land ownership and land use to overlay with habitats to support planning and delivery?

From Rachel Whaley CCC - PAT to Everyone : Re farmer and landowner engagement this is something we need to work through on the Pilot and we have our ELM convenor Jeny Wain to assist with this

From Carol Moffat Farmer Network to Everyone : Great Rachel, The Farmer Network can help with this if needed.

From Jenny NE (PAT) to Everyone : Hi everyone, Jenny Wain, ELM Convenor. I've been liaising with NFU, Cumbria Farmer Network and Commoners organisations to work out who/how to engage with farmers and land managers over the next 6 weeks to plug in knowledge, ideas and information into the development of the LNRS. If anyone wants to contact me [jenny.wain@naturalengland.org.uk](mailto:jenny.wain@naturalengland.org.uk) or 07827664164

From Tony (YDNPA) (PAT) to Everyone : Some initiatives in YDNPA trying to get to engage with farmers & landowners include Dale by Dale, Payment by Results Test & Trial, 'Recover Map, ELM advocacy work. Pleased to share any of this & learn from others about good ways to build consensus on nature recovery.

From Dave W - Butterfly Conservation to Everyone : Habitats expanded and better connected: fine for some habitats, e.g. while creating reedbeds and "brownfields" might be economically and/or politically difficult, we do at least have the ability & knowledge to do it.

However, there are habitats for which we can't do this and where maintenance involving bespoke management is essential if biodiversity loss is to be avoided. There needs to be balance between retention of existing features as well as developing exciting new improved habitats if the overarching goal of net biodiversity gain is to be achieved. There are a lot of very rare species in Cumbria!

From Kath Milnes, NE (PAT) to Everyone : Thanks Dave, that's a valuable comment. Very important to remember.

From Moira Owen MOD/DIO to Everyone : need to stress nature rather than producing a natural capital approach. Biodiversity tends to lose out versus natural capital which has clear economics such as forestry

From Andy, NPAONB (PAT) to Everyone : Agree with Moira, and this is the approach the PAT is taking

From Jez Westgarth LDNPA/NT to Everyone : Just agreeing with Jenny about silo risk. Also keen that the LNRS helps Cumbria ensure that the individual 'boots on the ground measures' combine together to deliver locally and in combination at scale - to achieve more than the sum of the parts.

From Kath Milnes, NE (PAT) to Everyone : Yes, agree that this should definitely be an ambition of the LNRS

From Hannah Field FFCC to Everyone : Agree with Jez - place-based approach rather than siloing?

From Raegan Workington Nature Partnership to Everyone : Also agree with Jez, more joined up working please!

From Tony (YDNPA) (PAT) to Everyone : In terms of the spatial side of the LNRS how we deal with green infrastructure could be helpful.

From Keith Forestry Commission NW & WM (PAT) to Everyone : these are general but worth looking at in-terms of our 12 NCA areas <https://naturalresources.wales/about-us/area-statements/?lang=en>

From Carol Moffat Farmer Network to Everyone : The Farmer Network do Fell Gather Roadshows to demonstrate farming and the countryside to the public, these are run at Grassmere Sports and other locations they are always very well received. this could be rolled out further if funding allows.



## Appendix - attendees

---

Pilot Area Team	Organisation
Chloe Tringham	Cumbria CC
Ellyse Mather	Environment Agency
Emily Battrick	Eden District Council
Jenny Wain	PAT -Natural England
Julie Alexander	Allerdale Borough Council
Kate Tobin	Forestry Commission
Kath Milnes	Natural England
Keith Jones	Forestry Commission
Lucy Barron	PAT - Arnside & Silverdale AONB
Mark Johnson	Cumbria LEP
Matthew Park	PAT - Barrow
Naomi Dalton	PAT - NT/Arnside & Silverdale AONB
Naomi Kay	PAT - Solway Coast AONB
Paul Evans	Cumbria Local Nature Partnership
Rachel Whaley	Cumbria CC
Stephen Trotter	PAT - CWT
Suzanne Perry	Natural England
Tim Duckmanton	Lake District NPA
Tony Serjeant	Yorkshire Dales NP

Participant	Organisation
Adam Day	The Farmer Network
Elizabeth Radford	Eden Rivers Trust
Andy Lees	PAT - North Pennines AONB
Barbara Smith	Bewcastle Parish Council
Carol Moffatt	The Farmer Network
Carol Williams	Bat Conservation Trust
Charles Ecroyd	Cumbria Local Access Forum
Charlie Gill	MMO - Marine Management Organisation
Chloe O'Hare	Highways England
Clair McFarlan	Solway Firth Partnership
Claire Gillham	Claire Gillham
Corentin Cortuila	Eden District Council - sustainability coordinator
Dave Wainwright	Butterfly Conservation
David Clarke	David Clarke
David Harpley	Cumbria Wildlife Trust
Dean Mason	Lake District National Park Partnership
Frank Mawby	Thornhill Meadows Trust
Geoff Storey	Aggregate Industries
Hannah Field	Food, Farming and Countryside Commission
Hannah Hyland	Environment Agency
Heinz Traut	Red Squirrels Northern England
Ian Jack	Royal Forestry Society

Ian Wharton	SLDC parish council engagement
Jaime Brooks	Cumbria LNP
James Airey	NFU
Jamie Robins	Buglife
Jan Darrall	Friends of the Lake District
Jane Harrison	CLA - Country Landowners Association
Jayne Wilkinson	South Cumbria Rivers Trust
Jez Westgarth	National Trust/LDNP Partnership
Jim Bliss	Lowther Estate
Jo Sayer	BOOM
John Hooson	National Trust
Jonathan May	Carlisle District Council - Greenspaces Team Leader
Julian Oston	Dallam Tower Estates
Kate Blue	Westmorland Dales Farmers Cluster
Kevin Holmes	SLDC parish council engagement
Lynda	Lynda
Marion Brown	Rusland Horizons Trust
Martin Allman	Borderlands Natural Capital Investment Zone
Martin Chadwick	Butterfly Conservation - Cumbria
Martin Wain	Butterfly Conservation
Matthew Thomas	Network Rail
Michele MacCallam	Groundwork NE and Cumbria
Moira Owen	MoD - Ministry of Defence
Neville Elstone	Cumbria Woodlands
Nicola Davies	Natural England
Olivia Nelson	Floodplain Meadows Partnership
Pete Leeson	Woodland Trust
Peter Welsh	Yorkshire Dales National Park Biodiversity Forum
Peter Woodhead	Trustee of Cumbria Wildlife Trust
Raegan Blacker	Workington Nature Partnership
Richard Spiers	Interested party - Solway area - Watchtree Nature Reserve
Richard Storton	Dynamic Dunescapes, Natural England
Robert Benson	Moorland Association
Roe Baker	Cumbria Action for Sustainability
Ryan Dobson	Watchtree Nature Reserve
Steve Garner	Environment Agency
Sylvia Woodhead	Cumbria Geological Conservation Group
Tom Dearnley	Forestry England
Tom Hayek	John Muir Trust
Warren Birch	Community Rail Cumbria
Will Rawling	Cumbria Federation of Commoners
<b>Facilitators</b>	
Rhuari Bennett	3KQ
Ruth Dalton	3KQ