

District Deprivation Summary

Carlisle

2015

The Indices of Multiple Deprivation (IMD)

The IMD are produced by the Department for Communities & Local Government (DCLG) to consider the unmet needs of small areas, known as Lower Super Output Areas (LSOAs), caused by a lack of resources of across seven domains:

- Income;
- Employment;
- Education Skills and Training;
- Health and Disability;
- Crime;
- Barriers to Housing and Services; and
- Living Environment.

In addition to the above, there are two supplementary indices:

- The Income Deprivation Affecting Children Index (IDACI); and
- The Income Deprivation Affecting Older People Index (IDAOP).

Deprivation scores for each LSOA across all of the above domains are also combined to create an overall Index of Multiple Deprivation score and rank for each LSOA.

When deprivation scores are combined for all LSOAs in Carlisle, the district is classified as the 4th most deprived district in Cumbria for overall deprivation. It falls within the 20% most deprived nationally in terms of Education, Skills & Training; and it falls within the 30% most deprived nationally in terms of Health deprivation & Disability

The following 5 LSOAs in Carlisle rank within the 10% most deprived of areas in England in terms of overall deprivation:

Figure 1: Carlisle's LSOAs that rank within the 10% most deprived in England:

LSOA	Ward	District	Overall ID Score (higher = more deprived)	Overall ID Rank (out of 32,844 nationally)
E01019245	Upperby	Carlisle	61.737	780
E01019193	Belle Vue	Carlisle	60.801	865
E01019197	Botcherby	Carlisle	54.364	1,551
E01019248	Upperby	Carlisle	52.243	1,843
E01019231	Morton	Carlisle	46.632	2,860

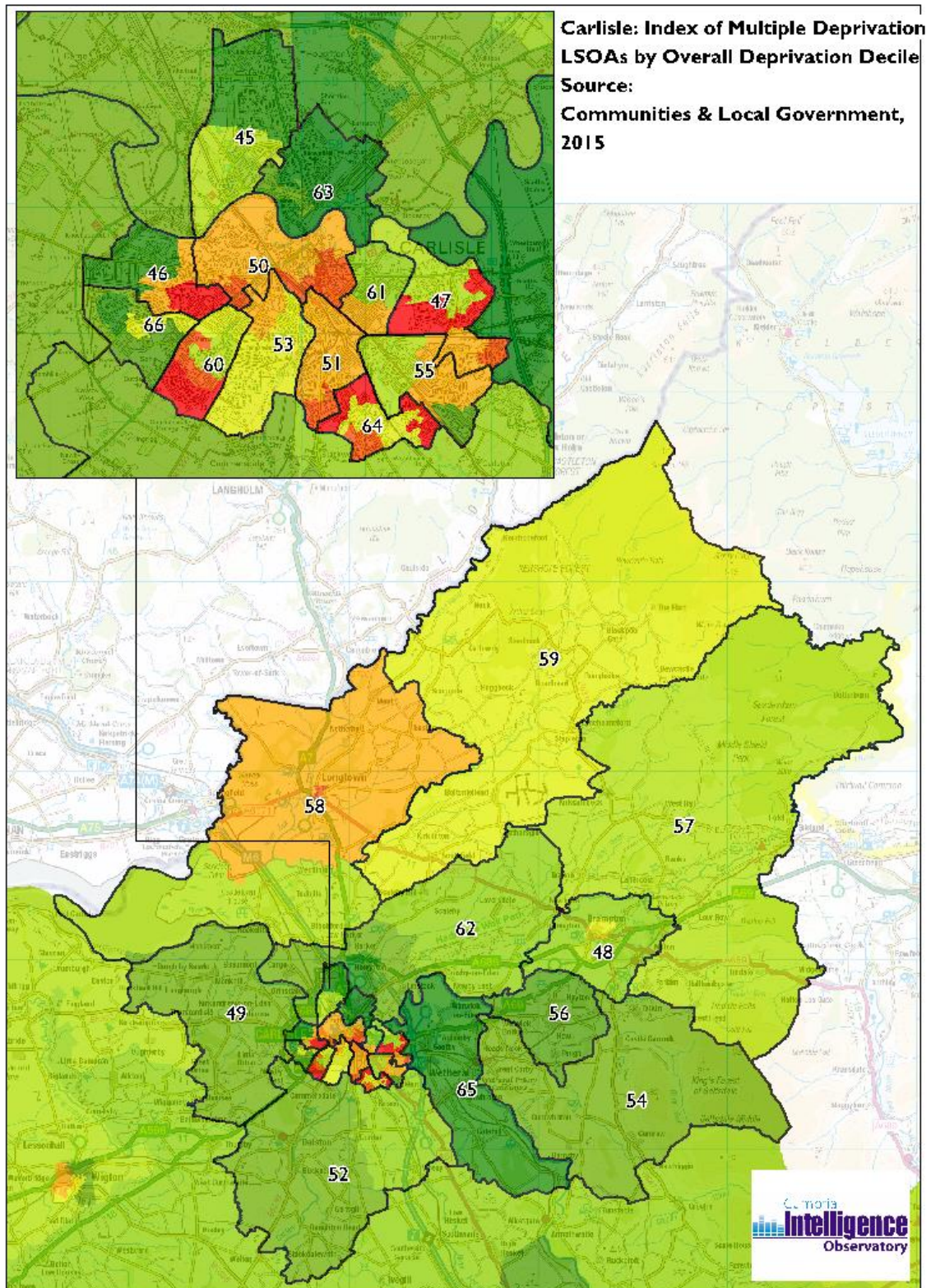
Source: IMD, DCLG, 2015

Seven domains: There are 4 LSOAs which rank within the 10% most deprived of areas in England in relation to **Income deprivation**, these fall within the wards of Upperby, Belle Vue and Botcherby. There are 5 LSOAs which rank within the 10% most deprived areas of England in relation to **Employment deprivation**, these fall within the wards of Upperby, Belle Vue, Botcherby and Morton. There are 15 LSOAs which rank within the 10% most deprived areas of England in relation to **Education, Skills & Training deprivation**, these fall within the wards of Upperby, Belle Vue, Botcherby, Morton, Longtown & Rockcliffe, Castle, Currock and Harraby. There are 12 LSOAs which rank within the 10% most deprived areas of England in relation to **Health deprivation & Disability**, these fall within the wards of Upperby, Belle Vue, Botcherby, Upperby, Morton, Castle, Currock and St. Aidans. There are 4 LSOAs which rank within the 10% most deprived areas of England in relation to **Crime deprivation**, these fall within the wards of Belle Vue, Upperby, Castle and Currock. There are 6 LSOAs which rank within the 10% most deprived areas of England in relation to **Barriers to Housing & Services**, these fall within the wards of Dalston, Lyne, Burgh, Irthing, Stanwix Rural, and Great Corby & Geltsdale. There are 10 LSOAs which rank within the 10% most deprived areas of England in relation to **Living Environment**, these fall within the wards of Lyne, Irthing, Stanwix Rural, Longtown & Rockcliffe, Castle, Currock, St. Aidans, and Denton Holme.

Supplementary indices: There are 5 LSOAs which rank within the 10% most deprived of areas in England in relation to **Income Deprivation on Affecting Children Index**, these fall within the wards of Belle Vue, Upperby, and Botcherby. There are 2 LSOAs which rank within the 10% most deprived of areas in England in relation to **Income Deprivation on Affecting Older People Index**, they fall within the wards of Belle Vue and Upperby.

Figure 2 plots each LSOA in the district shaded according to overall deprivation scores; areas shaded in red represent communities that are in the 10% most deprived of areas in England, while areas shaded in dark green represent communities that are in the 10% least deprived of areas in England. Ward boundaries are overlaid onto the LSOA data.

Figure 2:



(c) Crown Copyright and Database Right, 2015 Ordnance Survey Licence Number 100019596

Figure 2 Legend:

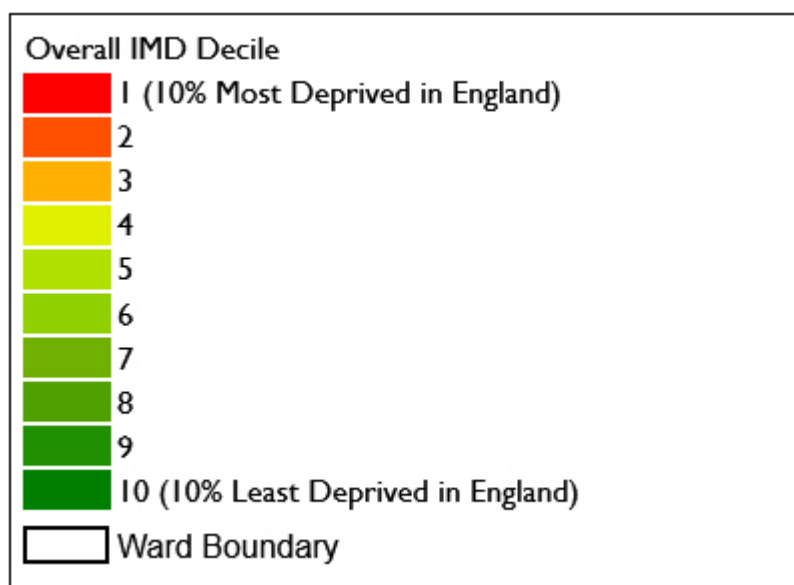


Figure 2: Ward Name and Map ID:

Ward Name	Map ID	Ward Name	Map ID
Belah	45	Hayton	56
Belle Vue	46	Irthing	57
Botcherby	47	Longtown & Rockcliffe	58
Brampton	48	Lyne	59
Burgh	49	Morton	60
Castle	50	St Aidans	61
Currock	51	Stanwix Rural	62
Dalston	52	Stanwix Urban	63
Denton Holme	53	Upperby	64
Great Corby and Geltsdale	54	Wetheral	65
Harraby	55	Yewdale	66

Further Information

English Indices of Deprivation:

<https://www.gov.uk/government/collections/english-indices-of-deprivation>

Cumbria Atlas:

<http://www.cumbriaobservatory.org.uk/Atlas/CumbriaAtlas.asp>

The Cumbria Atlas enables users to explore ward and LSOA level statistics, with national, county, district and urban area comparisons in a user-friendly format combining maps, tables and charts.

Key Contacts Email: info@cumbriaobservatory.org.uk