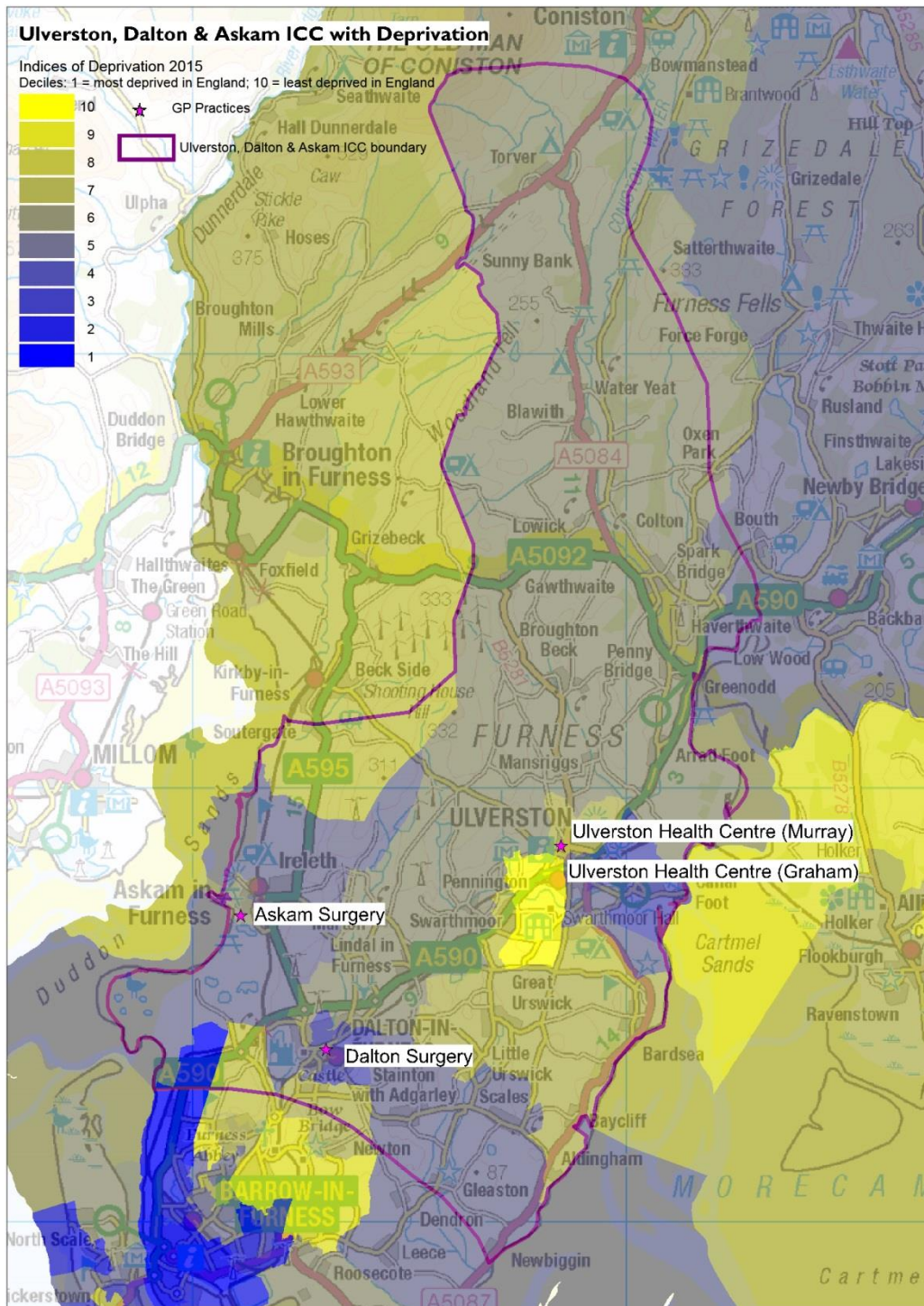


Ulverston, Dalton & Askam ICC

Figure 1: Ulverston, Dalton & Askam ICC with Indices of Deprivation 2015



(c) Crown Copyright and Database Right, 2017 Ordnance Survey Licence Number 100019596

Key issues

- Older population projected to increase; working age population projected to decrease in the district
- Greater % of patients on GP Registers with: hypertension; diabetes; asthma; and dementia than the national average
- The rate of “deaths from stroke” is worse than the national average

Ulverston, Dalton & Askam ICC

Key: Text in *blue* refers to *registered population*; text in black refers to *resident population*. Where possible, comparisons with South Cumbria have been included; as well as benchmarking data against the England average.

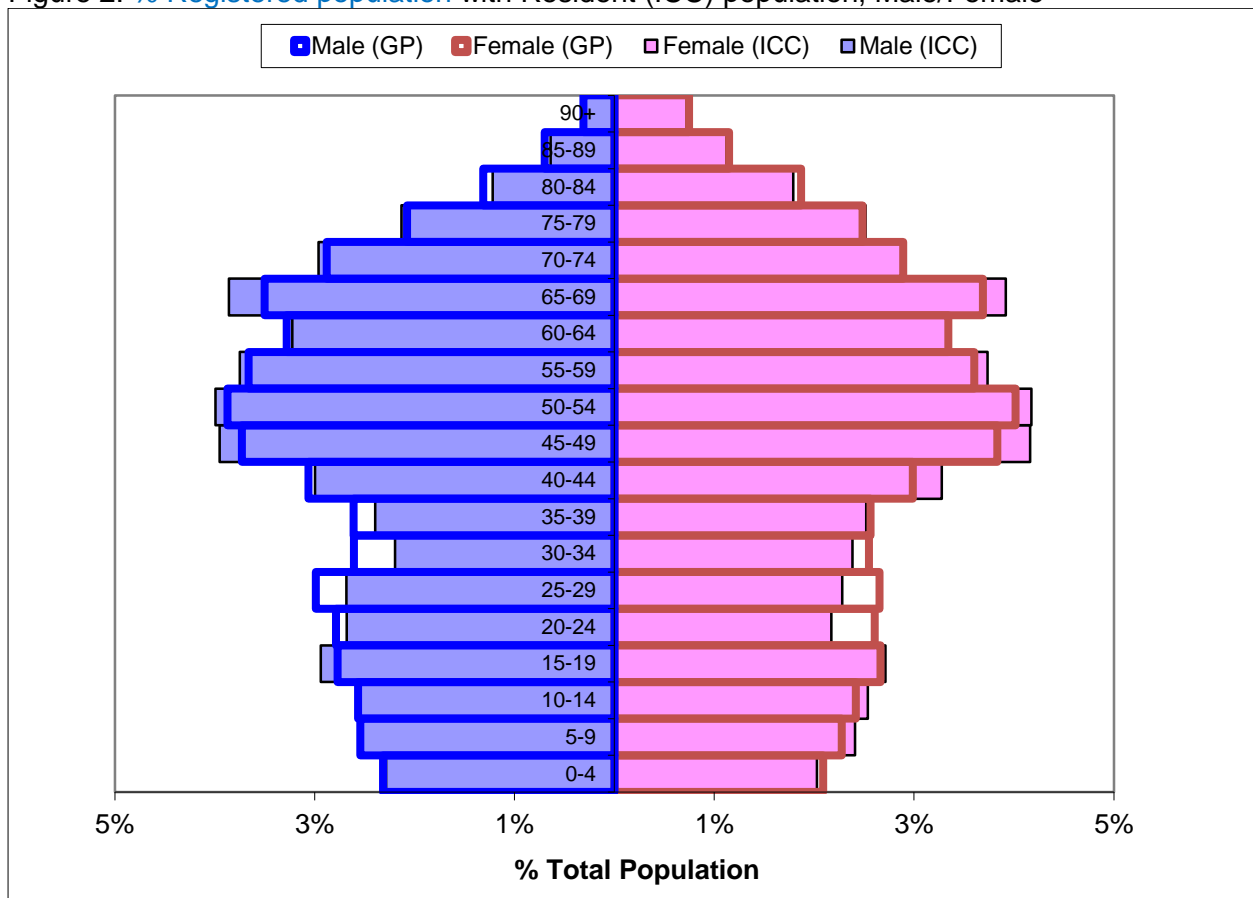
Table 1: Demographics, Ulverston, Dalton & Askam ICC

	ICC
Registered Population (total combined GPs within ICC)	25,400
Mid-Year Population, ONS 2015 (calculations based on % within ICC)	29,817
% 0-19 years	20.0%
% 15-64 years	61.6%
% 65+ years	24.1%
% 85+ years	2.8%
Black and Minority Ethnic (BME) Population (%)	1.3%
Population whose ethnicity is not 'White UK' (%)	2.8%
Proficiency in English (% of people who cannot speak English well or at all)	0.1%
Provision of 1 hour or more unpaid care per week (%)	11.9%
Provision of 50 hours or more unpaid care per week (%)	2.7%

Source: GP Population NHS Digital, July 2016

https://data.gov.uk/dataset/numbers_of_patients_registered_at_a_gp_practice ; Mid-Year Population Estimates, Office for National Statistics, 2015 <https://www.ons.gov.uk/> ; Census 2011 <https://www.ons.gov.uk/census/2011census>

Figure 2: % Registered population with Resident (ICC) population, Male/Female



Source: GP Population NHS Digital, July 2016; Mid-Year Population Estimates, Office for National Statistics, 2015

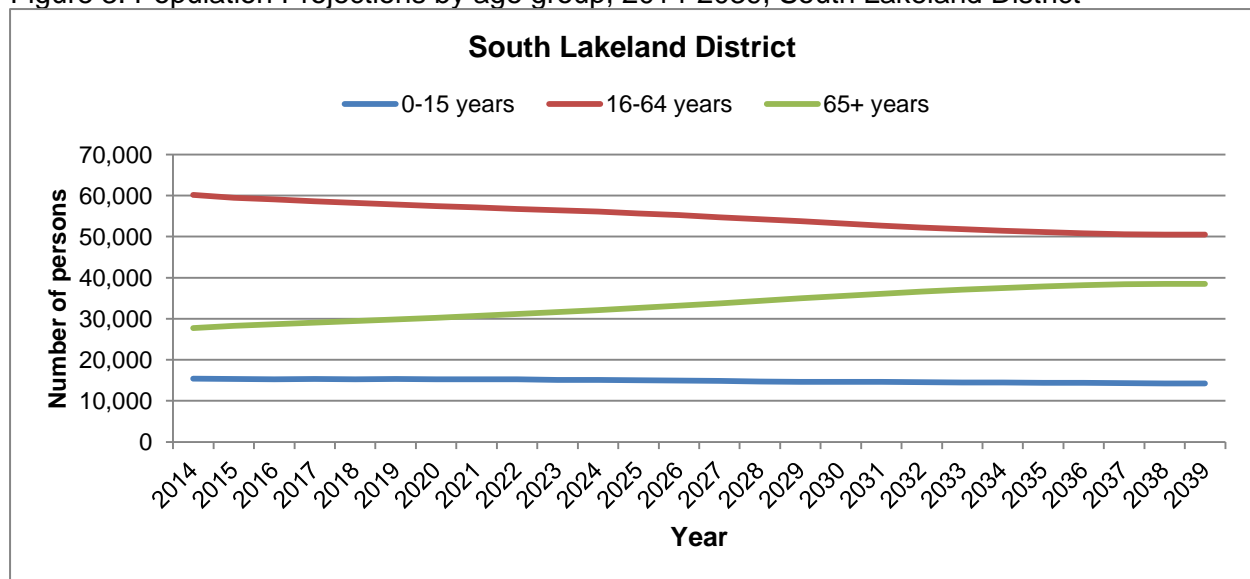
Ulverston, Dalton & Askam ICC

Table 2: Population Projections by age group, 2014-2039, South Lakeland District

	Population			Numerical Change		Proportional Change	
	2014	2019	2039	2014-2019	2014-2039	2014-2019	2014-2039
All Ages	103,271	102,958	103,168	-313	-103	-0.3	-0.1
0-15 years	15,381	15,306	14,228	-75	-1,153	-0.5	-7.5
16-64 years	60,143	57,799	50,470	-2,344	-9,673	-3.9	-16.1
65+	27,747	29,853	38,469	2,106	10,722	7.6	38.6

Source: 2014-Based Sub-National Population Projections, Office for National Statistics
<https://www.ons.gov.uk/peoplepopulationandcommunity/populationandmigration/populationprojections>

Figure 3: Population Projections by age group, 2014-2039, South Lakeland District



Source: 2014-Based Sub-National Population Projections, Office for National Statistics

Comparison with England:

● significantly worse ● significantly better ● not significantly different from average

Table 3: Socio-Economic

	Ulverston, Dalton & Askam ICC	South Cumbria	England
Unemployment (%) 2015-16	1.2%	1.5%	1.8%
Long Term Unemployment (Rate/1,000, 16-64 years) 2015-16	3.4	4.0%	4.3

Source: Local Health, Public Health England <http://www.localhealth.org.uk/>

Table 4: Lifestyle

	Ulverston, Dalton & Askam ICC	South Cumbria	England
Hospital stays for alcohol related harm (SAR) 2010/11-2014/15	90.2	110.8	100
Obese adults (%) 2006-2008	21.7%	23.0%	24.1%
Binge drinking adults (%) 2006-2008	21.1%	21.1%	20.0%

Ulverston, Dalton & Askam ICC

Healthy eating adults (%)2006-2008	28.1%	29.1%	28.7%
Inactive < 30 mins moderate physical activity per week (%) (Adults Aged 16+, 2015-2016) (District)	19.2%	(Cumbria) 20.4%	22.0%
Fairly active 30-149 mins moderate physical activity per week (%) (Adults Aged 16+, 2015-2016) (District)	10.0%	(Cumbria) 12.3%	12.6%
Active = 150+ mins moderate physical activity per week (%) (Adults Aged 16+, 2015-2016) (District)	70.8%	(Cumbria) 67.3%	65.4%
Smoking prevalence in adults - current smokers (Adults Aged 18+, 2016) (District)	12.5%	(Cumbria) 15.5%	15.5%

Source: Local Health, Public Health England <http://www.localhealth.org.uk/> and Active Lives Survey <https://www.sportengland.org/research/active-lives-survey/> Public Health Outcomes Framework <http://fingertips.phe.org.uk/>

Table 5: Child health

	<i>Ulverston, Dalton & Askam ICC</i>	<i>South Cumbria</i>	<i>England</i>
Infant Mortality (rate per 1,000 live births) 2013-15 (District)	2.5		3.9
Low Birth Weight Births (%) 2010-14	6.6%	6.5%	7.4%
Child Development at age 5 (%) 2013-14	64.6%	59.7%	60.4%
GCSE Achievement (5A*-C inc. Eng & Maths) (%) 2013-14	57.4%	57.3%	56.6%
Obese Children (Reception Year) (%) 2012/13-2014/15	10.9%	10.6%	9.3%
Children with excess weight (Reception Year) (%) 2012/13-2014/15	25.2%	24.6%	22.2%
Obese Children (Year 6) (%) 2012/13-2014/15	18.2%	18.6%	19.0%
Children with excess weight (Year 6) (%) 2012/13-2014/15	32.7%	33.2%	33.4%
Deliveries to teenage mothers (%) 2010/11-2014/15	1.5%	2.0%	1.2%

Source: Local Health, Public Health England <http://www.localhealth.org.uk/> . For trend data go here: <http://fingertips.phe.org.uk/>

Table 6: Emergency and Elective hospital admissions for hip fractures, Standardised Admission Ratios (SARs), 2010/11 to 2014/15

	<i>Ulverston, Dalton & Askam ICC</i>	<i>South Cumbria</i>	<i>England</i>
Emergency hospital admissions for hip fracture (65+yrs)	98.8	92.0	100
Elective hospital admissions for hip replacement	108.9	125.8	100

Source: Local Health, Public Health England <http://www.localhealth.org.uk/>

Table 7: Cancer incidence, Standardised Incidence Ratios (SIRs), 2010-2014

	<i>Ulverston, Dalton & Askam ICC</i>	<i>South Cumbria</i>	<i>England</i>
Incidence of all cancer	100.8	98.6	100
Incidence of breast cancer	89.2	101.7	100
Incidence of colorectal cancer	98.8	101.3	100
Incidence of lung cancer	95.7	86.2	100
Incidence of prostate cancer	98.6	87.7	100

Source: Local Health, Public Health England <http://www.localhealth.org.uk/>

Ulverston, Dalton & Askam ICC

Table 8: Life Expectancy (Years); mortality and cause of death, Standardised Mortality Ratios (SMRs), 2010-2014

	Ulverston, Dalton & Askam ICC	South Cumbria	England
Life Expectancy at birth - MALE (2013-15) (District)	80.7	(Cumbria) 79.2	79.5
Life Expectancy at birth – FEMALE (2013-15) (District)	84.7	(Cumbria) 82.8	83.1
Healthy Life Expectancy at birth - MALE (2009-13) (District)	67.5	(Cumbria) 63.8	63.5
Healthy Life Expectancy at birth - MALE (2009-13) (District)	69.0	(Cumbria) 65.3	64.8
Deaths from all causes, under 75 years	96.7	97.7	100
Deaths from all cancer, under 75 years	99.6	95.2	100
Deaths from circulatory disease, under 75 years	94.8	97.7	100
Deaths from coronary heart disease, under 75 years	86.0	96.1	100
Deaths from stroke, all ages	132.3	116.8	100
Deaths from respiratory diseases, all ages	87.6	89.2	100

Source: Local Health, Public Health England <http://www.localhealth.org.uk/>

Table 9: Travel & Transport

	Ulverston, Dalton & Askam ICC	England
No cars or vans in household (%) (2011)	17.4%	25.8%
1+ car(s) or van(s) available in household (%) (2011)	82.6%	74.2%
Average travel times to key services - public transport/walking (mins) 2014 (District)	25.9	17.0
Average travel times to key services - car (mins) 2014 (District)	12.2	10.3

Source: Census 2011 <https://www.ons.gov.uk/census/2011census> ; Department for Transport, 2014. <https://www.gov.uk/government/collections/journey-time-statistics>

Table 10: Disease/condition prevalence. GP Practice Register(s) for diseases/conditions, 2015-16

	Ulverston, Dalton & Askam ICC		CCG		England	
	Number	%	Number	%	Number	%
Hypertension patients	4,318	17.03%	83,081	15.92%	7,949,274	13.81%
Diabetes patients	1,529	7.21%	31,467	7.27%	3,033,529	6.55%
Asthma patients	1,790	7.06%	34,613	6.63%	3,400,679	5.91%
Dementia patients	261	1.03%	5,118	0.98%	436,805	0.76%

Source: Quality Outcomes Framework, NHS Digital, 2015-16. <http://content.digital.nhs.uk/qof>

Ulverston, Dalton & Askam ICC

Health services use

Table 11: Health Services Activity: utilisation numbers and rates (per 1,000 population); year-to-date 2016-17 (to September)

	Number		Rate per 1,000	
	Ulverston, Dalton & Askam ICC	CCG	Ulverston, Dalton & Askam ICC	CCG
Non Elective	1,278	25,155	44.67	43.86
Total Electives	1,677	34,174	58.62	59.59
Total Outpatient Firsts	2,330	48,664	81.45	84.85
Total Outpatient Subsequent	3,936	49,050	137.59	85.52
Accident & Emergency Consultant Led Only	3,490	69,651	122.00	121.44

Source: NHS North of England Commissioning Support Unit (NECS). Glossary available.

Adult Social care

Table 12: Number and rate (per 10,000, 18+ population) of services commissioned, by ICC and Cumbria County Council, during Oct' 2015 – Sep' 2016

	Ulverston, Dalton & Askam ICC		Cumbria	
	Number	Rate	Number	Rate
Residential Care	97	32.5	2,409	48.4
Nursing Care	96	32.2	891	17.9
Homecare	265	88.9	3,850	77.3
Day Services	77	25.8	1,380	27.7
Reablement	114	38.2	2,384	47.9
Assistive Technology (Telecare)	71	23.8	1,221	24.5
Carers Budget/ ISF payments/ Direct payments	121	40.6	2,472	49.6
Total service users	636	213.3	10,826	217.4

Source: Adult Social Care, Cumbria County Council

Mental Health

Table 14: Numbers and rates (per 1,000) of A&E attendances for mental health conditions; NHS Cumbria CCG and GP Practice Based Localities, 2013-14 to 2015-16.

Locality	2013-14		2014-15		2015-16	
	Number	Rate	Number	Rate	Number	Rate
South Lakeland (Locality/District)	343	3.0	384	3.3	493	4.3
NHS Cumbria CCG	2,581	4.9	2,690	5.2	3,116	6.0

Source: North of England Commissioning Support (NECS) Information Service. Note: CCG total does not include those unassigned to a locality.

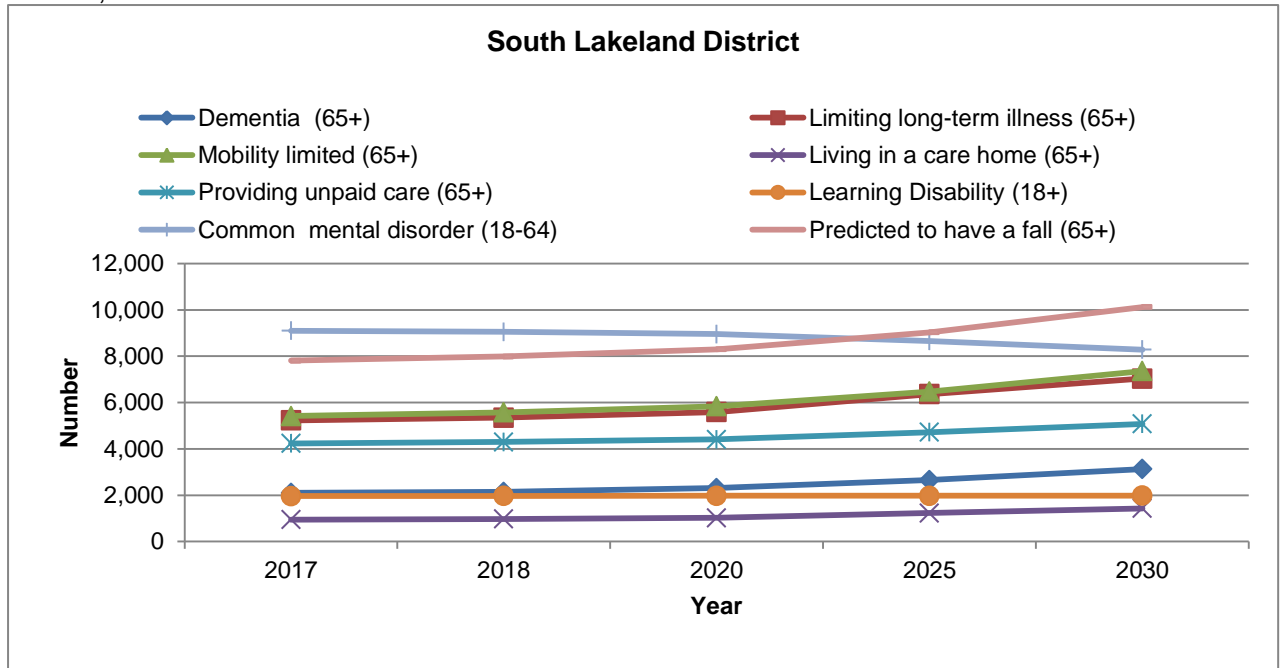
Table 15: Numbers & rates (per 1,000 GP population) of referrals to mental health services, 2015-16

	Total referrals		Admitted		Only Non-Admitted		No Care	
	Number	Rate	Number	Rate	Number	Rate	Number	Rate
Ulverston, Dalton & Askam ICC	1,082	42.6	23	0.9	441	17.4	244	9.6
South Cumbria	8,983	45.1	326	1.6	3,743	18.8	1,993	10.0
Cumbria	26,915	51.5	884	1.7	12,349	23.7	5,492	10.5

Source: Cumbria Partnership NHS Foundation Trust

Health Projections

Figure 4: Health projections: number of residents with a health condition, South Lakeland District, 2017 – 2030



Source: Projecting Older Peoples Population Information (POPPI) <http://www.poppi.org.uk/>; and Projecting Adult Needs and Service Information System (PANSI) <http://www.pansi.org.uk/> [N.B health projections are determined by projected population figures only]

Table 16: Health projections: number of residents with a health condition, South Lakeland District, 2017 - 2030

	2017	2018	2020	2025	2030
Dementia (65+)	2,101	2,144	2,305	2,651	3,127
Limiting long-term illness (65+)	5,228	5,351	5,588	6,364	7,033
Mobility limited (65+)	5,418	5,574	5,838	6,476	7,359
Living in a care home (65+)	950	975	1,025	1,228	1,431
Providing unpaid care (65+)	4,236	4,296	4,407	4,717	5,076
Learning disability (18+)	1,962	1,968	1,974	1,973	1,980
Common mental disorder (18-64)	9,102	9,052	8,955	8,658	8,285
Predicted to have a fall (65+)	7,805	7,989	8,298	9,028	10,121
Predicted to be admitted to hospital as a result of falls (65+)	609	629	666	777	841

Source: Projecting Older Peoples Population Information (POPPI) <http://www.poppi.org.uk/>; and Projecting Adult Needs and Service Information System (PANSI) <http://www.pansi.org.uk/>

Falls

Table 17: Number and rate (per 1,000) of falls call-outs per year; average over period: April 2013 to March 2016

	<i>Number</i>		<i>Rate per 1,000</i>	
	<i>Ulverston, Dalton & Askam ICC</i>	<i>Cumbria</i>	<i>Ulverston, Dalton & Askam ICC</i>	<i>Cumbria</i>
Number of falls call outs (yearly average)	450	7,074	15.1	14.2

Source: Trauma and Injury Intelligence Group (TIIG)/North West Ambulance Service [based on the call out location, not the patient address]

Further information

Further information relating to each indicator for all ICCs, Cumbria and England (where available), including how calculations have been made can be found in the supporting ICC Workbook here: <https://www.cumbriaobservatory.org.uk/health-social-care/health-social-care-further-information/>

Joint Strategic Needs Assessment:

<http://www.cumbriaobservatory.org.uk/health/JSNA/2015/homepage.asp>

It is intended that these profiles will be updated on an annual basis; and will be further developed to include additional sources of data.