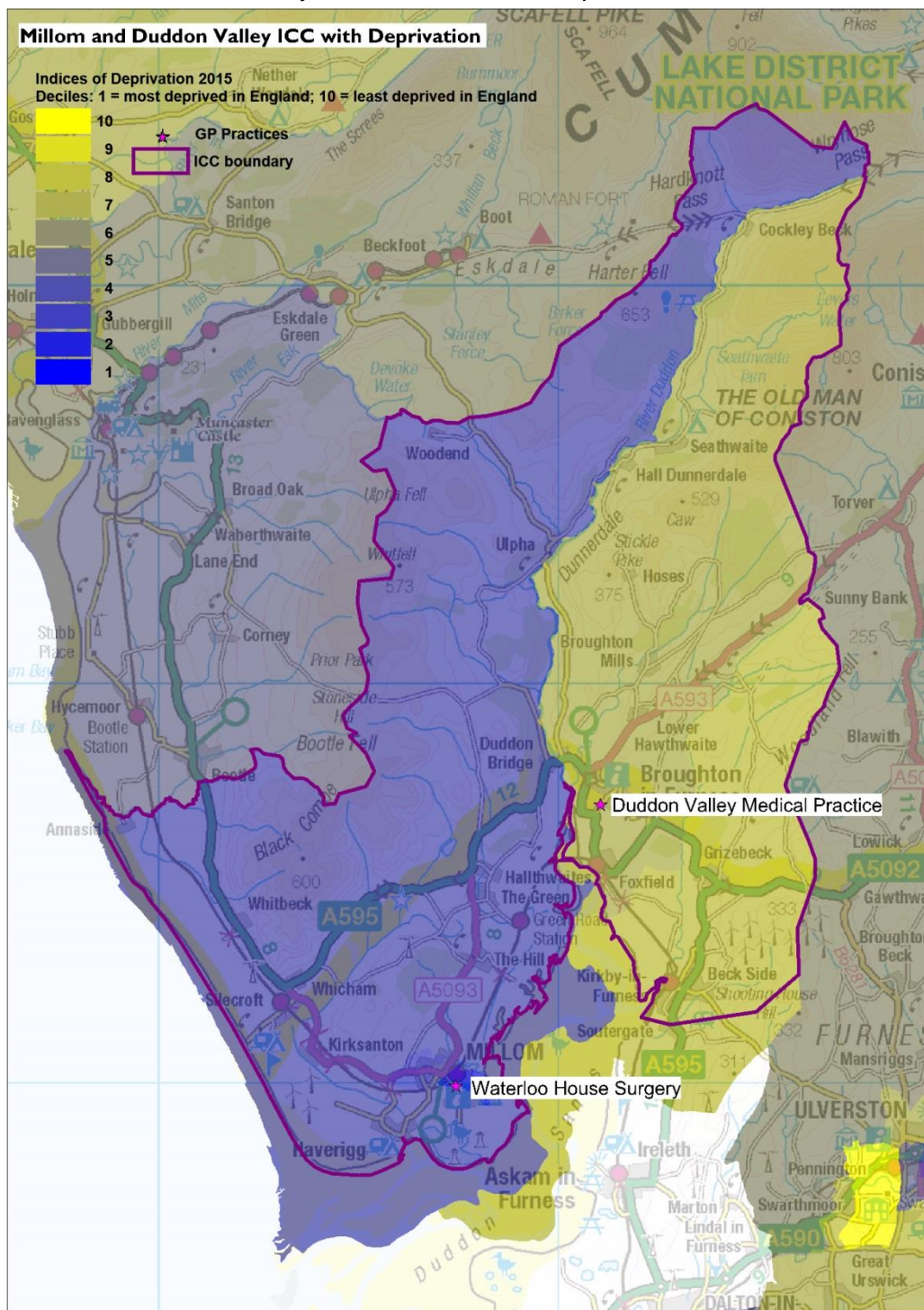


Millom & Duddon Valley ICC

Figure 1: Millom & Duddon Valley ICC with Indices of Deprivation 2015



(c) Crown Copyright and Database Right, 2017 Ordnance Survey Licence Number 100019596

Key issues

- Older population projected to increase; working age population projected to decrease in the district (Copeland)
- Hospital stays for alcohol related harm are above the national average
- Childhood obesity is worse than the national average
- Elective hospital admissions for hip replacements are above the national average
- Life Expectancy and Healthy Life Expectancy in the district (Copeland) is below average
- Deaths from circulatory disease, under 75 years, are worse than the national average
- Greater % of patients on GP Registers with: hypertension; diabetes; asthma; and dementia than the national average

Millom & Duddon Valley ICC

Key: Text in *blue* refers to *registered population*; text in black refers to *resident population*. Where possible, comparisons with South Cumbria have been included; as well as benchmarking data against the England average.

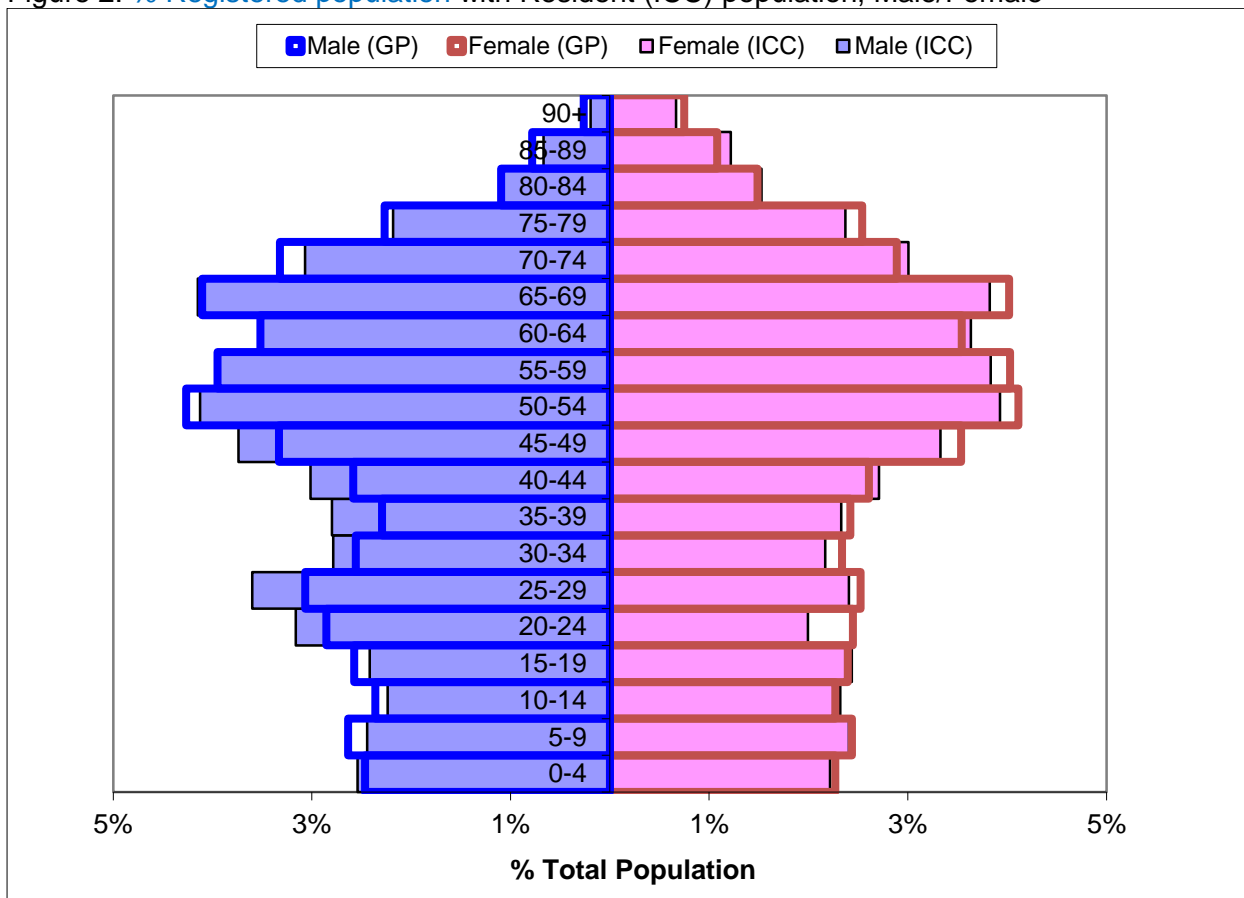
Table 1: Demographics, Millom & Duddon Valley ICC

| | ICC |
|--|------------|
| Registered Population (total combined GPs within ICC) | 11,767 |
| Mid-Year Population, ONS 2015 (calculations based on % within ICC) | 11,068 |
| % 0-19 years | 19.0% |
| % 15-64 years | 61.9% |
| % 65+ years | 24.0% |
| % 85+ years | 2.7% |
| Black and Minority Ethnic (BME) Population (%) | 1.5% |
| Population whose ethnicity is not 'White UK' (%) | 2.9% |
| Proficiency in English (% of people who cannot speak English well or at all) | 0.2% |
| Provision of 1 hour or more unpaid care per week (%) | 11.9% |
| Provision of 50 hours or more unpaid care per week (%) | 2.9% |

Source: GP Population NHS Digital, July 2016

https://data.gov.uk/dataset/numbers_of_patients_registered_at_a_gp_practice ; Mid-Year Population Estimates, Office for National Statistics, 2015 <https://www.ons.gov.uk/> ; Census 2011 <https://www.ons.gov.uk/census/2011census>

Figure 2: % Registered population with Resident (ICC) population, Male/Female



Source: GP Population NHS Digital, July 2016; Mid-Year Population Estimates, Office for National Statistics, 2015

Millom & Duddon Valley ICC

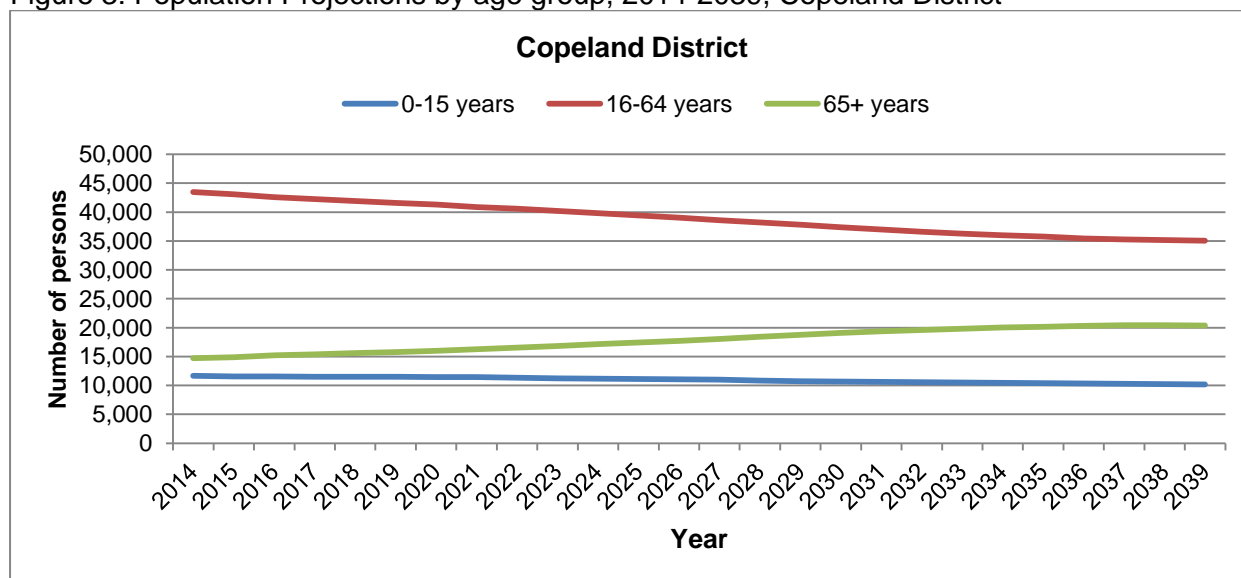
Table 2: Population Projections by age group, 2014-2039, Copeland District

| | Population | | | Numerical Change | | Proportional Change | |
|-------------|------------|--------|--------|------------------|-----------|---------------------|-----------|
| | 2014 | 2019 | 2039 | 2014-2019 | 2014-2039 | 2014-2019 | 2014-2039 |
| All Ages | 69,832 | 68,876 | 65,611 | -956 | -4,221 | -1.4 | -6 |
| 0-15 years | 11,658 | 11,488 | 10,168 | -170 | -1,490 | -1.5 | -12.8 |
| 16-64 years | 43,477 | 41,605 | 35,062 | -1,872 | -8,415 | -4.3 | -19.4 |
| 65+ | 14,697 | 15,782 | 20,380 | 1,085 | 5,683 | 7.4 | 38.7 |

Source: 2014-Based Sub-National Population Projections, Office for National Statistics

<https://www.ons.gov.uk/peoplepopulationandcommunity/populationandmigration/populationprojections>

Figure 3: Population Projections by age group, 2014-2039, Copeland District



Source: 2014-Based Sub-National Population Projections, Office for National Statistics

Comparison with England:

● significantly worse ● significantly better ● not significantly different from average

Table 3: Socio-Economic

| | Millom & Duddon Valley ICC | South Cumbria | England |
|--|----------------------------|---------------|---------|
| Unemployment (%) 2015-16 | 2.2% | 1.5% | 1.8% |
| Long Term Unemployment (Rate/1,000, 16-64 years) 2015-16 | 6.9 | 4.0% | 4.3 |

Source: Local Health, Public Health England <http://www.localhealth.org.uk/>

Table 4: Lifestyle

| | Millom & Duddon Valley ICC | South Cumbria | England |
|---|----------------------------|---------------|---------|
| Hospital stays for alcohol related harm (SAR) 2010/11-2014/15 | 122.9 | 110.8 | 100 |
| Obese adults (%) 2006-2008 | 26.3% | 23.0% | 24.1% |
| Binge drinking adults (%) 2006-2008 | 23.5% | 21.1% | 20.0% |
| Healthy eating adults (%) 2006-2008 | 28.0% | 29.1% | 28.7% |

Millom & Duddon Valley ICC

| | | | |
|---|-------|--------------------|-------|
| Inactive < 30 mins moderate physical activity per week (%) (Adults Aged 16+, 2015-2016) (District) | 24.7% | (Cumbria) 20.4% | 22.0% |
| Fairly active 30-149 mins moderate physical activity per week (%) (Adults Aged 16+, 2015-2016) (District) | 13.4% | (Cumbria) 12.3% | 12.6% |
| Active = 150+ mins moderate physical activity per week (%) (Adults Aged 16+, 2015-2016) (District) | 61.9% | (Cumbria) 67.3% | 65.4% |
| Smoking prevalence in adults - current smokers (Adults Aged 18+, 2016) (District) | 16.1% | (Cumbria) 15.5% | 15.5% |

Source: Local Health, Public Health England <http://www.localhealth.org.uk/> and Active Lives Survey <https://www.sportengland.org/research/active-lives-survey/> Public Health Outcomes Framework <http://fingertips.phe.org.uk/>

Table 5: Child health

| | <i>Millom & Duddon Valley ICC</i> | <i>South Cumbria</i> | <i>England</i> |
|--|---------------------------------------|----------------------|----------------|
| Infant Mortality (rate per 1,000 live births) 2013-15 (District) | 2.3 | | 3.9 |
| Low Birth Weight Births (%) 2010-14 | 7.6% | 6.5% | 7.4% |
| Child Development at age 5 (%) 2013-14 | 53.0% | 59.7% | 60.4% |
| GCSE Achievement (5A*-C inc. Eng & Maths) (%) 2013-14 | 57.2% | 57.3% | 56.6% |
| Obese Children (Reception Year) (%) 2012/13-2014/15 | 14.0% | 10.6% | 9.3% |
| Children with excess weight (Reception Year) (%) 2012/13-2014/15 | 29.5% | 24.6% | 22.2% |
| Obese Children (Year 6) (%) 2012/13-2014/15 | 19.4% | 18.6% | 19.0% |
| Children with excess weight (Year 6) (%) 2012/13-2014/15 | 34.9% | 33.2% | 33.4% |
| Deliveries to teenage mothers (%) 2010/11-2014/15 | N/A | 2.0% | 1.2% |

Source: Local Health, Public Health England <http://www.localhealth.org.uk/> . For trend data go here: <http://fingertips.phe.org.uk/>

Table 6: Emergency and Elective hospital admissions for hip fractures, Standardised Admission Ratios (SARs), 2010/11 to 2014/15

| | <i>Millom & Duddon Valley ICC</i> | <i>South Cumbria</i> | <i>England</i> |
|---|---------------------------------------|----------------------|----------------|
| Emergency hospital admissions for hip fracture (65+yrs) | 93.1 | 92.0 | 100 |
| Elective hospital admissions for hip replacement | 127.9 | 125.8 | 100 |

Source: Local Health, Public Health England <http://www.localhealth.org.uk/>

Table 7: Cancer incidence, Standardised Incidence Ratios (SIRs), 2010-2014

| | <i>Millom & Duddon Valley ICC</i> | <i>South Cumbria</i> | <i>England</i> |
|--------------------------------|---------------------------------------|----------------------|----------------|
| Incidence of all cancer | 97.1 | 98.6 | 100 |
| Incidence of breast cancer | 102.3 | 101.7 | 100 |
| Incidence of colorectal cancer | 98.6 | 101.3 | 100 |
| Incidence of lung cancer | 88.4 | 86.2 | 100 |
| Incidence of prostate cancer | 90.9 | 87.7 | 100 |

Source: Local Health, Public Health England <http://www.localhealth.org.uk/>

Millom & Duddon Valley ICC

Table 8: Life Expectancy (Years); mortality and cause of death, Standardised Mortality Ratios (SMRs), 2010-2014

| | Millom & Duddon Valley ICC | South Cumbria | England |
|--|---------------------------------------|----------------------|----------------|
| Life Expectancy at birth - MALE (2013-15) (District) | 78.3 | (Cumbria) 79.2 | 79.5 |
| Life Expectancy at birth – FEMALE (2013-15) (District) | 81.3 | (Cumbria) 82.8 | 83.1 |
| Healthy Life Expectancy at birth - MALE (2009-13) (District) | 61.7 | (Cumbria) 63.8 | 63.5 |
| Healthy Life Expectancy at birth - MALE (2009-13) (District) | 63.3 | (Cumbria) 65.3 | 64.8 |
| Deaths from all causes, under 75 years | 108.0 | 97.7 | 100 |
| Deaths from all cancer, under 75 years | 93.0 | 95.2 | 100 |
| Deaths from circulatory disease, under 75 years | 141.0 | 97.7 | 100 |
| Deaths from coronary heart disease, under 75 years | 140.9 | 96.1 | 100 |
| Deaths from stroke, all ages | 113.2 | 116.8 | 100 |
| Deaths from respiratory diseases, all ages | 99.1 | 89.2 | 100 |

Source: Local Health, Public Health England <http://www.localhealth.org.uk/>

Table 9: Travel & Transport

| | Millom & Duddon Valley ICC | England |
|--|---------------------------------------|----------------|
| No cars or vans in household (%) (2011) | 21.4% | 25.8% |
| 1+ car(s) or van(s) available in household (%) (2011) | 78.6% | 74.2% |
| Average travel times to key services - public transport/walking (mins) 2014 (District) | 22.9 | 17.0 |
| Average travel times to key services - car (mins) 2014 (District) | 11.4 | 10.3 |

Source: Census 2011 <https://www.ons.gov.uk/census/2011census> ; Department for Transport, 2014. <https://www.gov.uk/government/collections/journey-time-statistics>

Table 10: Disease/condition prevalence. GP Practice Register(s) for diseases/conditions, 2015-16

| | Millom & Duddon Valley ICC | | CCG | | England | |
|-----------------------|---------------------------------------|--------|------------|--------|----------------|--------|
| | Number | % | Number | % | Number | % |
| Hypertension patients | 1,790 | 15.21% | 83,081 | 15.92% | 7,949,274 | 13.81% |
| Diabetes patients | 776 | 7.87% | 31,467 | 7.27% | 3,033,529 | 6.55% |
| Asthma patients | 855 | 7.26% | 34,613 | 6.63% | 3,400,679 | 5.91% |
| Dementia patients | 104 | 0.88% | 5,118 | 0.98% | 436,805 | 0.76% |

Source: Quality Outcomes Framework, NHS Digital, 2015-16. <http://content.digital.nhs.uk/qof>

Millom & Duddon Valley ICC

Health services use

Table 11: Health Services Activity: utilisation numbers and rates (per 1,000 population); year-to-date 2016-17 (to September)

| | Number | | Rate per 1,000 | |
|--|----------------------------|--------|----------------------------|--------|
| | Millom & Duddon Valley ICC | CCG | Millom & Duddon Valley ICC | CCG |
| Non Elective | 686 | 25,155 | 55.24 | 43.86 |
| Total Electives | 813 | 34,174 | 65.47 | 59.59 |
| Total Outpatient Firsts | 1,465 | 48,664 | 117.97 | 84.85 |
| Total Outpatient Subsequent | 2,000 | 49,050 | 161.05 | 85.52 |
| Accident & Emergency Consultant Led Only | 1,540 | 69,651 | 124.01 | 121.44 |

Source: NHS North of England Commissioning Support Unit (NECS). Glossary available.

Adult Social care

Table 12: Number and rate (per 10,000, 18+ population) of services commissioned, by ICC and Cumbria County Council, during Oct' 2015 – Sep' 2016

| | Millom & Duddon Valley ICC | | Cumbria | |
|--|----------------------------|-------|---------|-------|
| | Number | Rate | Number | Rate |
| Residential Care | 55 | 49.7 | 2,409 | 48.4 |
| Nursing Care | ** | 1.8 | 891 | 17.9 |
| Homecare | 86 | 77.7 | 3,850 | 77.3 |
| Day Services | 24 | 21.7 | 1,380 | 27.7 |
| Reablement | 73 | 66.0 | 2,384 | 47.9 |
| Assistive Technology (Telecare) | 45 | 40.7 | 1,221 | 24.5 |
| Carers Budget/ ISF payments/ Direct payments | 37 | 33.4 | 2,472 | 49.6 |
| Total service users | 228 | 206.0 | 10,826 | 217.4 |

Source: Adult Social Care, Cumbria County Council **numbers below 5 have been suppressed

Mental Health

Table 14: Numbers and rates (per 1,000) of A&E attendances for mental health conditions; NHS Cumbria CCG and GP Practice Based Localities, 2013-14 to 2015-16.

| Locality | 2013-14 | | 2014-15 | | 2015-16 | |
|---------------------------------|---------|------|---------|------|---------|------|
| | Number | Rate | Number | Rate | Number | Rate |
| Copeland (Locality/District) | 386 | 6.2 | 377 | 6.1 | 438 | 7.1 |
| NHS Cumbria CCG | 2,581 | 4.9 | 2,690 | 5.2 | 3,116 | 6.0 |

Source: North of England Commissioning Support (NECS) Information Service. Note: CCG total does not include those unassigned to a locality.

Table 15: Numbers & rates (per 1,000 GP population) of referrals to mental health services, 2015-16

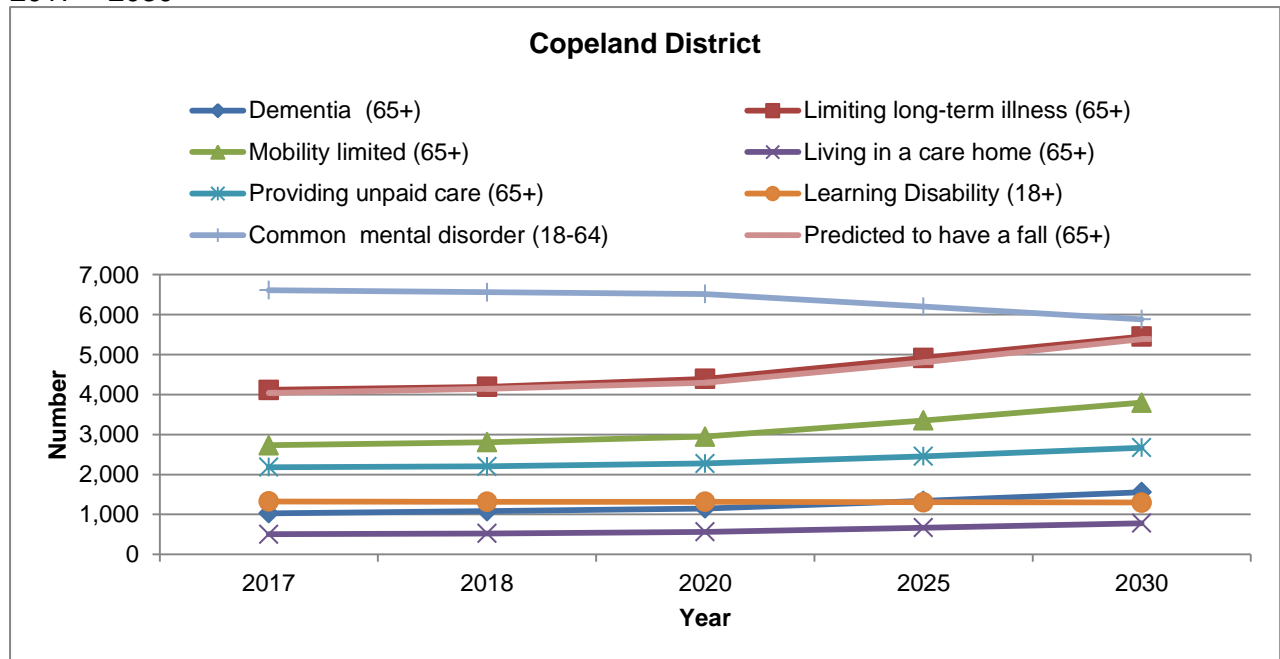
| | Total referrals | | Admitted | | Only Non-Admitted | | No Care | |
|----------------------------|-----------------|------|----------|------|-------------------|------|---------|------|
| | Number | Rate | Number | Rate | Number | Rate | Number | Rate |
| Millom & Duddon Valley ICC | 463 | 39.3 | 14 | 1.2 | 193 | 16.4 | 97 | 8.2 |
| South Cumbria | 8,983 | 45.1 | 326 | 1.6 | 3,743 | 18.8 | 1,993 | 10.0 |
| Cumbria | 26,915 | 51.5 | 884 | 1.7 | 12,349 | 23.7 | 5,492 | 10.5 |

Source: Cumbria Partnership NHS Foundation Trust

Millom & Duddon Valley ICC

Health Projections

Figure 4: Health projections: number of residents with a health condition, Copeland District, 2017 – 2030



Source: Projecting Older Peoples Population Information (POPPI) <http://www.poppi.org.uk/>; and Projecting Adult Needs and Service Information System (PANSI) <http://www.pansi.org.uk/> [N.B health projections are determined by projected population figures only]

Table 16: Health projections: number of residents with a health condition, Copeland District, 2017 - 2030

| | 2017 | 2018 | 2020 | 2025 | 2030 |
|---|-------|-------|-------|-------|-------|
| Dementia (65+) | 1,028 | 1,081 | 1,151 | 1,336 | 1,557 |
| Limiting long-term illness (65+) | 4,118 | 4,194 | 4,395 | 4,917 | 5,452 |
| Mobility limited (65+) | 2,733 | 2,807 | 2,946 | 3,353 | 3,798 |
| Living in a care home (65+) | 506 | 524 | 565 | 670 | 779 |
| Providing unpaid care (65+) | 2,184 | 2,203 | 2,274 | 2,454 | 2,670 |
| Learning disability (18+) | 1,324 | 1,316 | 1,319 | 1,307 | 1,299 |
| Common mental disorder (18-64) | 6,612 | 6,560 | 6,515 | 6,200 | 5,885 |
| Predicted to have a fall (65+) | 4,042 | 4,142 | 4,297 | 4,810 | 5,388 |
| Predicted to be admitted to hospital as a result of falls (65+) | 318 | 326 | 346 | 397 | 436 |

Source: Projecting Older Peoples Population Information (POPPI) <http://www.poppi.org.uk/> ; and Projecting Adult Needs and Service Information System (PANSI) <http://www.pansi.org.uk/>

Falls

Table 17: Number and rate (per 1,000) of falls call-outs per year; average over period: April 2013 to March 2016

| | <i>Number</i> | | <i>Rate per 1,000</i> | |
|--|---------------------------------------|----------------|---------------------------------------|----------------|
| | <i>Millom & Duddon Valley ICC</i> | <i>Cumbria</i> | <i>Millom & Duddon Valley ICC</i> | <i>Cumbria</i> |
| Number of falls call outs (yearly average) | 164 | 7,074 | 14.8 | 14.2 |

Source: Trauma and Injury Intelligence Group (TIIG)/North West Ambulance Service [based on the call out location, not the patient address]

Further information

Further information relating to each indicator for all ICCs, Cumbria and England (where available), including how calculations have been made can be found in the supporting ICC Workbook here: <https://www.cumbriaobservatory.org.uk/health-social-care/health-social-care-further-information/>

Joint Strategic Needs Assessment:

<http://www.cumbriaobservatory.org.uk/health/JSNA/2015/homepage.asp>

It is intended that these profiles will be updated on an annual basis; and will be further developed to include additional sources of data.