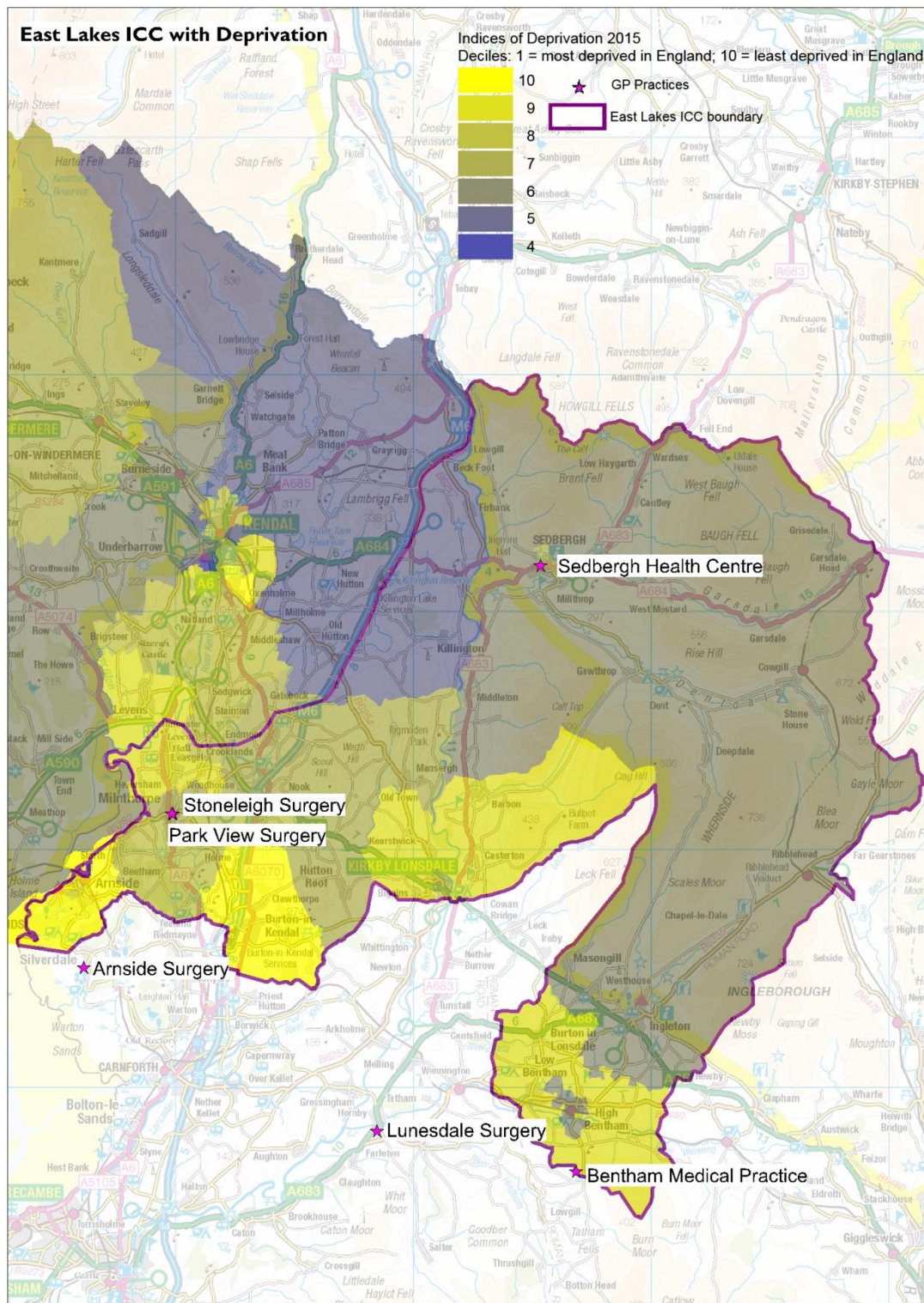


# East Lakes (Cumbria only) ICC

Figure 1: East Lakes ICC with Indices of Deprivation 2015



(c) Crown Copyright and Database Right, 2017 Ordnance Survey Licence Number 100019596

## Key issues

- Older population projected to increase; working age population projected to decrease in the district (South Lakeland)
- Elective hospital admissions for hip replacement above national average
- Greater % of patients on GP Registers with: hypertension; asthma; and dementia than the national average

## East Lakes (Cumbria only) ICC

**Key:** Text in *blue* refers to *registered population*; text in *black* refers to *resident population*. Where possible, comparisons with South Cumbria have been included; as well as benchmarking data against the England average.

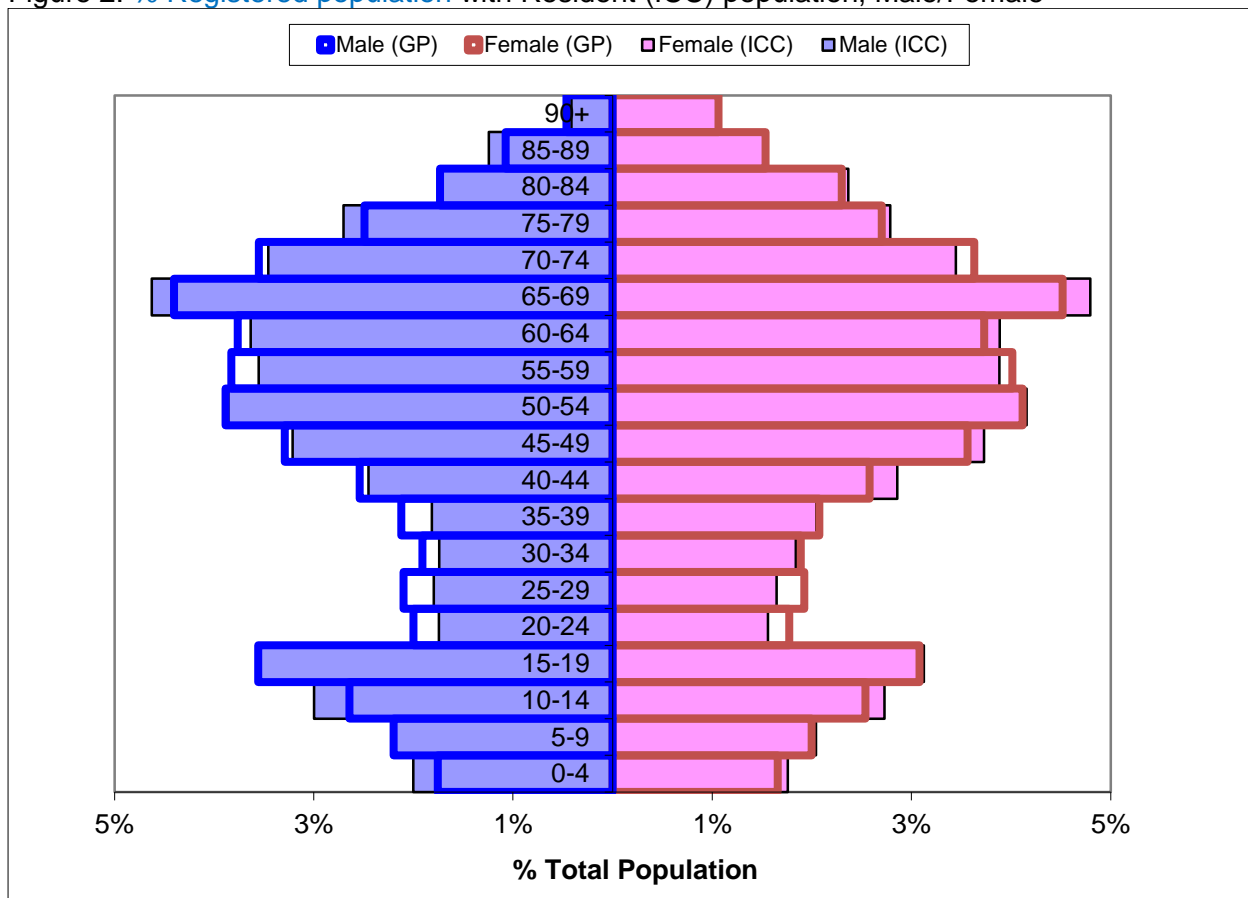
Table 1: Demographics, East Lakes ICC

	<b>ICC</b>
<b>Registered Population (total combined GPs within ICC)</b>	32,313
Mid-Year Population, ONS 2015 (calculations based on % within ICC)	18,071
% 0-19 years	20.4%
% 15-64 years	56.1%
% 65+ years	30.2%
% 85+ years	4.3%
Black and Minority Ethnic (BME) Population (%)	2.0%
Population whose ethnicity is not 'White UK' (%)	3.9%
Proficiency in English (% of people who cannot speak English well or at all)	0.2%
Provision of 1 hour or more unpaid care per week (%)	11.7%
Provision of 50 hours or more unpaid care per week (%)	2.1%

Source: GP Population NHS Digital, July 2016

[https://data.gov.uk/dataset/numbers\\_of\\_patients\\_registered\\_at\\_a\\_gp\\_practice](https://data.gov.uk/dataset/numbers_of_patients_registered_at_a_gp_practice) ; Mid-Year Population Estimates, Office for National Statistics, 2015 <https://www.ons.gov.uk/> ; Census 2011 <https://www.ons.gov.uk/census/2011census>

Figure 2: % Registered population with Resident (ICC) population, Male/Female



Source: GP Population NHS Digital, July 2016; Mid-Year Population Estimates, Office for National Statistics, 2015

## East Lakes (Cumbria only) ICC

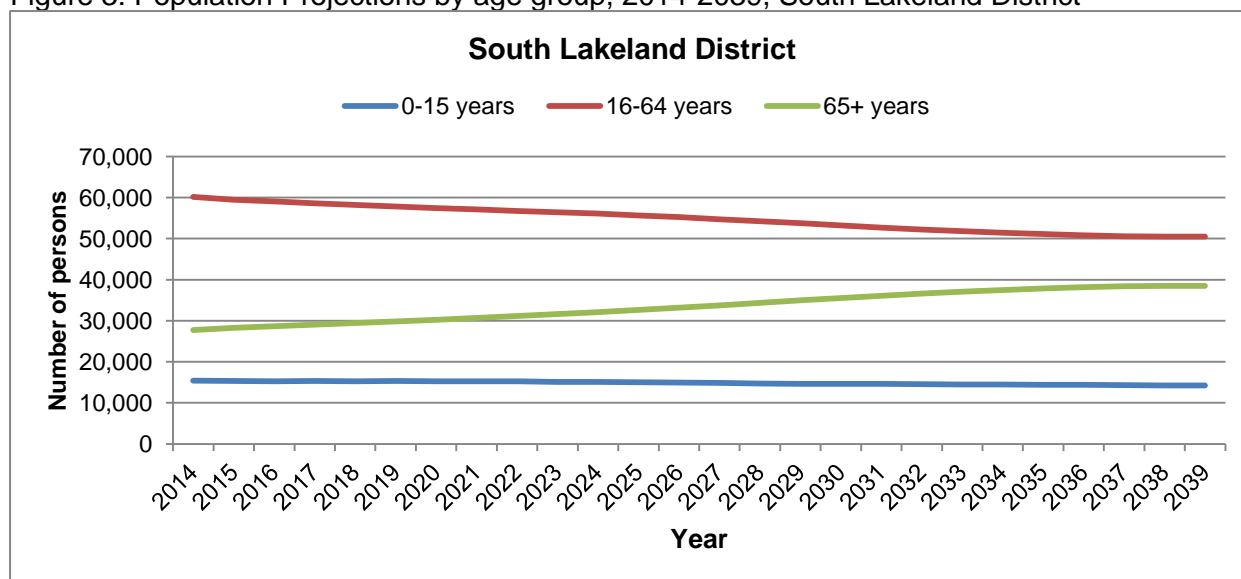
Table 2: Population Projections by age group, 2014-2039, South Lakeland District

	Population			Numerical Change		Proportional Change	
	2014	2019	2039	2014-2019	2014-2039	2014-2019	2014-2039
All Ages	103,271	102,958	103,168	-313	-103	-0.3	-0.1
0-15 years	15,381	15,306	14,228	-75	-1,153	-0.5	-7.5
16-64 years	60,143	57,799	50,470	-2,344	-9,673	-3.9	-16.1
65+	27,747	29,853	38,469	2,106	10,722	7.6	38.6

Source: 2014-Based Sub-National Population Projections, Office for National Statistics

<https://www.ons.gov.uk/peoplepopulationandcommunity/populationandmigration/populationprojections>

Figure 3: Population Projections by age group, 2014-2039, South Lakeland District



Source: 2014-Based Sub-National Population Projections, Office for National Statistics

Comparison with England:

● significantly worse ● significantly better ● not significantly different from average

Table 3: Socio-Economic

	East Lakes ICC	South Cumbria	England
Unemployment (%) 2015-16	0.4%	1.5%	1.8%
Long Term Unemployment (Rate/1,000, 16-64 years) 2015-16	0.0	4.0%	4.3

Source: Local Health, Public Health England <http://www.localhealth.org.uk/>

Table 4: Lifestyle

	East Lakes ICC	South Cumbria	England
Hospital stays for alcohol related harm (SAR) 2010/11-2014/15	85.1	110.8	100
Obese adults (%) 2006-2008	17.3%	23.0%	24.1%
Binge drinking adults (%) 2006-2008	19.4%	21.1%	20.0%
Healthy eating adults (%) 2006-2008	36.7%	29.1%	28.7%
Inactive < 30 mins moderate physical activity per week	19.2%	(Cumbria)	22.0%

## East Lakes (Cumbria only) ICC

(%) (Adults Aged 16+, 2015-2016) (District)		20.4%	
Fairly active 30-149 mins moderate physical activity per week (%) (Adults Aged 16+, 2015-2016) (District)	10.0%	(Cumbria) 12.3%	12.6%
Active = 150+ mins moderate physical activity per week (%) (Adults Aged 16+, 2015-2016) (District)	70.8%	(Cumbria) 67.3%	65.4%
Smoking prevalence in adults - current smokers (Adults Aged 18+, 2016) (District)	12.5%	(Cumbria) 15.5%	15.5%

Source: Local Health, Public Health England <http://www.localhealth.org.uk/> and Active Lives Survey <https://www.sportengland.org/research/active-lives-survey/> Public Health Outcomes Framework <http://fingertips.phe.org.uk/>

Table 5: Child health

	<i>East Lakes ICC</i>	<i>South Cumbria</i>	<i>England</i>
Infant Mortality (rate per 1,000 live births) 2013-15 (District)	2.5		3.9
Low Birth Weight Births (%) 2010-14	5.5%	6.5%	7.4%
Child Development at age 5 (%) 2013-14	57.1%	59.7%	60.4%
GCSE Achievement (5A*-C inc. Eng & Maths) (%) 2013-14	74.2%	57.3%	56.6%
Obese Children (Reception Year) (%) 2012/13-2014/15	8.2%	10.6%	9.3%
Children with excess weight (Reception Year) (%) 2012/13-2014/15	22.2%	24.6%	22.2%
Obese Children (Year 6) (%) 2012/13-2014/15	13.5%	18.6%	19.0%
Children with excess weight (Year 6) (%) 2012/13-2014/15	28.2%	33.2%	33.4%
Deliveries to teenage mothers (%) 2010/11-2014/15	0.0	2.0%	1.2%

Source: Local Health, Public Health England <http://www.localhealth.org.uk/> . For trend data go here: <http://fingertips.phe.org.uk/>

Table 6: Emergency and Elective hospital admissions for hip fractures, Standardised Admission Ratios (SARs), 2010/11 to 2014/15

	<i>East Lakes ICC</i>	<i>South Cumbria</i>	<i>England</i>
Emergency hospital admissions for hip fracture (65+yrs)	81.8	92.0	100
Elective hospital admissions for hip replacement	135.7	125.8	100

Source: Local Health, Public Health England <http://www.localhealth.org.uk/>

Table 7: Cancer incidence, Standardised Incidence Ratios (SIRs), 2010-2014

	<i>East Lakes ICC</i>	<i>South Cumbria</i>	<i>England</i>
Incidence of all cancer	89.8	98.6	100
Incidence of breast cancer	102.5	101.7	100
Incidence of colorectal cancer	88.3	101.3	100
Incidence of lung cancer	60.7	86.2	100
Incidence of prostate cancer	88.3	87.7	100

Source: Local Health, Public Health England <http://www.localhealth.org.uk/>

## East Lakes (Cumbria only) ICC

Table 8: Life Expectancy (Years); mortality and cause of death, Standardised Mortality Ratios (SMRs), 2010-2014

	<i>East Lakes ICC</i>	<i>South Cumbria</i>	<i>England</i>
Life Expectancy at birth - MALE (2013-15) (District)	80.7	(Cumbria) 79.2	79.5
Life Expectancy at birth – FEMALE (2013-15) (District)	84.7	(Cumbria) 82.8	83.1
Healthy Life Expectancy at birth - MALE (2009-13) (District)	67.5	(Cumbria) 63.8	63.5
Healthy Life Expectancy at birth - MALE (2009-13) (District)	69.0	(Cumbria) 65.3	64.8
Deaths from all causes, under 75 years	73.5	97.7	100
Deaths from all cancer, under 75 years	83.1	95.2	100
Deaths from circulatory disease, under 75 years	64.9	97.7	100
Deaths from coronary heart disease, under 75 years	69.8	96.1	100
Deaths from stroke, all ages	110.8	116.8	100
Deaths from respiratory diseases, all ages	79.7	89.2	100

Source: Local Health, Public Health England <http://www.localhealth.org.uk/>

Table 9: Travel & Transport

	<i>East Lakes ICC</i>	<i>England</i>
No cars or vans in household (%) (2011)	10.4%	25.8%
1+ car(s) or van(s) available in household (%) (2011)	89.6%	74.2%
Average travel times to key services - public transport/walking (mins) 2014 (District)	25.9	17.0
Average travel times to key services - car (mins) 2014 (District)	12.2	10.3

Source: Census 2011 <https://www.ons.gov.uk/census/2011census> ; Department for Transport, 2014. <https://www.gov.uk/government/collections/journey-time-statistics>

Table 10: Disease/condition prevalence. GP Practice Register(s) for diseases/conditions, 2015-16

	<i>East Lakes ICC</i>		<i>CCG</i>		<i>England</i>	
	Number	%	Number	%	Number	%
Hypertension patients	5,547	17.17%	83,081	15.92%	7,949,274	13.81%
Diabetes patients	1,646	6.05%	31,467	7.27%	3,033,529	6.55%
Asthma patients	2,312	7.16%	34,613	6.63%	3,400,679	5.91%
Dementia patients	430	1.33%	5,118	0.98%	436,805	0.76%

Source: Quality Outcomes Framework, NHS Digital, 2015-16. <http://content.digital.nhs.uk/qof>

### Health services use

Table 11: Health Services Activity: utilisation numbers and rates (per 1,000 population); year-to-date 2016-17 (to September)

	<i>Number</i>		<i>Rate per 1,000</i>	
	<i>East Lakes ICC</i>	<i>CCG</i>	<i>East Lakes ICC</i>	<i>CCG</i>
Non Elective	1,347	25,155	36.33	43.86
Total Electives	2,342	34,174	63.16	59.59
Total Outpatient Firsts	3,218	48,664	86.79	84.85
Total Outpatient Subsequent	5,185	49,050	139.84	85.52
Accident & Emergency Consultant Led Only	2,448	69,651	66.02	121.44

Source: NHS North of England Commissioning Support Unit (NECS). Glossary available.

## East Lakes (Cumbria only) ICC

### Adult Social care

Table 12: Number and rate (per 10,000, 18+ population) of services commissioned, by ICC and Cumbria County Council, during Oct' 2015 – Sep' 2016

	East Lakes ICC		Cumbria	
	Number	Rate	Number	Rate
Residential Care	102	56.4	2,409	48.4
Nursing Care	18	10.0	891	17.9
Homecare	82	45.4	3,850	77.3
Day Services	26	14.4	1,380	27.7
Reablement	118	65.3	2,384	47.9
Assistive Technology (Telecare)	71	39.3	1,221	24.5
Carers Budget/ ISF payments/ Direct payments	84	46.5	2,472	49.6
Total service users	394	218.0	10,826	217.4

Source: Adult Social Care, Cumbria County Council

### Mental Health

Table 14: Numbers and rates (per 1,000) of A&E attendances for mental health conditions; NHS Cumbria CCG and GP Practice Based Localities, 2013-14 to 2015-16.

Locality	2013-14		2014-15		2015-16	
	Number	Rate	Number	Rate	Number	Rate
South Lakeland (Locality/District)	343	3.0	384	3.3	493	4.3
NHS Cumbria CCG	2,581	4.9	2,690	5.2	3,116	6.0

Source: North of England Commissioning Support (NECS) Information Service. Note: CCG total does not include those unassigned to a locality.

Table 15: Numbers & rates (per 1,000 GP population) of referrals to mental health services, 2015-16

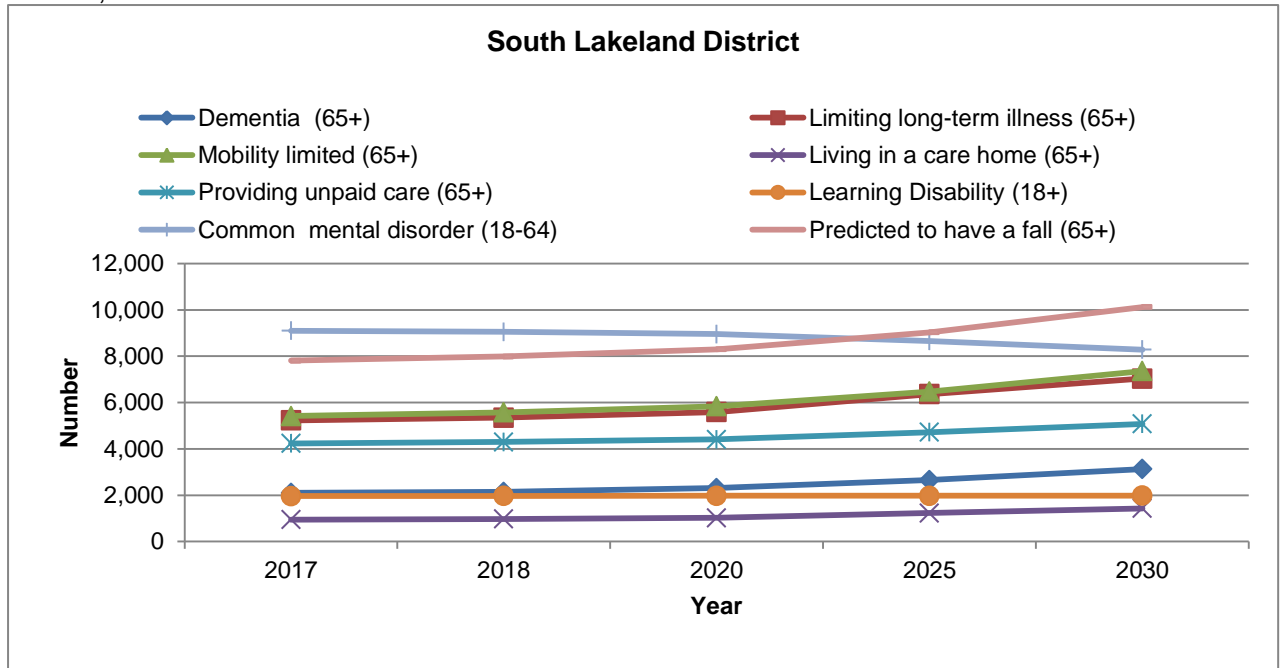
	Total referrals		Admitted		Only Non-Admitted		No Care	
	Number	Rate	Number	Rate	Number	Rate	Number	Rate
East Lakes ICC	859	26.6	27	0.8	319	9.9	176	5.4
South Cumbria	8,983	45.1	326	1.6	3,743	18.8	1,993	10.0
Cumbria	26,915	51.5	884	1.7	12,349	23.7	5,492	10.5

Source: Cumbria Partnership NHS Foundation Trust

## East Lakes (Cumbria only) ICC

### Health Projections

Figure 4: Health projections: number of residents with a health condition, South Lakeland District, 2017 – 2030



Source: Projecting Older Peoples Population Information (POPPI) <http://www.poppi.org.uk/>; and Projecting Adult Needs and Service Information System (PANSI) <http://www.pansi.org.uk/> [N.B health projections are determined by projected population figures only]

Table 16: Health projections: number of residents with a health condition, South Lakeland District, 2017 - 2030

	2017	2018	2020	2025	2030
Dementia (65+)	2,101	2,144	2,305	2,651	3,127
Limiting long-term illness (65+)	5,228	5,351	5,588	6,364	7,033
Mobility limited (65+)	5,418	5,574	5,838	6,476	7,359
Living in a care home (65+)	950	975	1,025	1,228	1,431
Providing unpaid care (65+)	4,236	4,296	4,407	4,717	5,076
Learning disability (18+)	1,962	1,968	1,974	1,973	1,980
Common mental disorder (18-64)	9,102	9,052	8,955	8,658	8,285
Predicted to have a fall (65+)	7,805	7,989	8,298	9,028	10,121
Predicted to be admitted to hospital as a result of falls (65+)	609	629	666	777	841

Source: Projecting Older Peoples Population Information (POPPI) <http://www.poppi.org.uk/>; and Projecting Adult Needs and Service Information System (PANSI) <http://www.pansi.org.uk/>

## East Lakes (Cumbria only) ICC

### **Falls**

Table 17: Number and rate (per 1,000) of falls call-outs per year; average over period: April 2013 to March 2016

	<b>Number</b>		<b>Rate per 1,000</b>	
	<b>East Lakes ICC</b>	<b>Cumbria</b>	<b>East Lakes ICC</b>	<b>Cumbria</b>
Number of falls call outs (yearly average)	271	7,074	15.0	14.2

Source: Trauma and Injury Intelligence Group (TIIG)/North West Ambulance Service [based on the call out location, not the patient address]

### **Further information**

Further information relating to each indicator for all ICCs, Cumbria and England (where available), including how calculations have been made can be found in the supporting ICC Workbook here: <https://www.cumbriaobservatory.org.uk/health-social-care/health-social-care-further-information/>

Joint Strategic Needs Assessment:

<http://www.cumbriaobservatory.org.uk/health/JSNA/2015/homepage.asp>

It is intended that these profiles will be updated on an annual basis; and will be further developed to include additional sources of data.