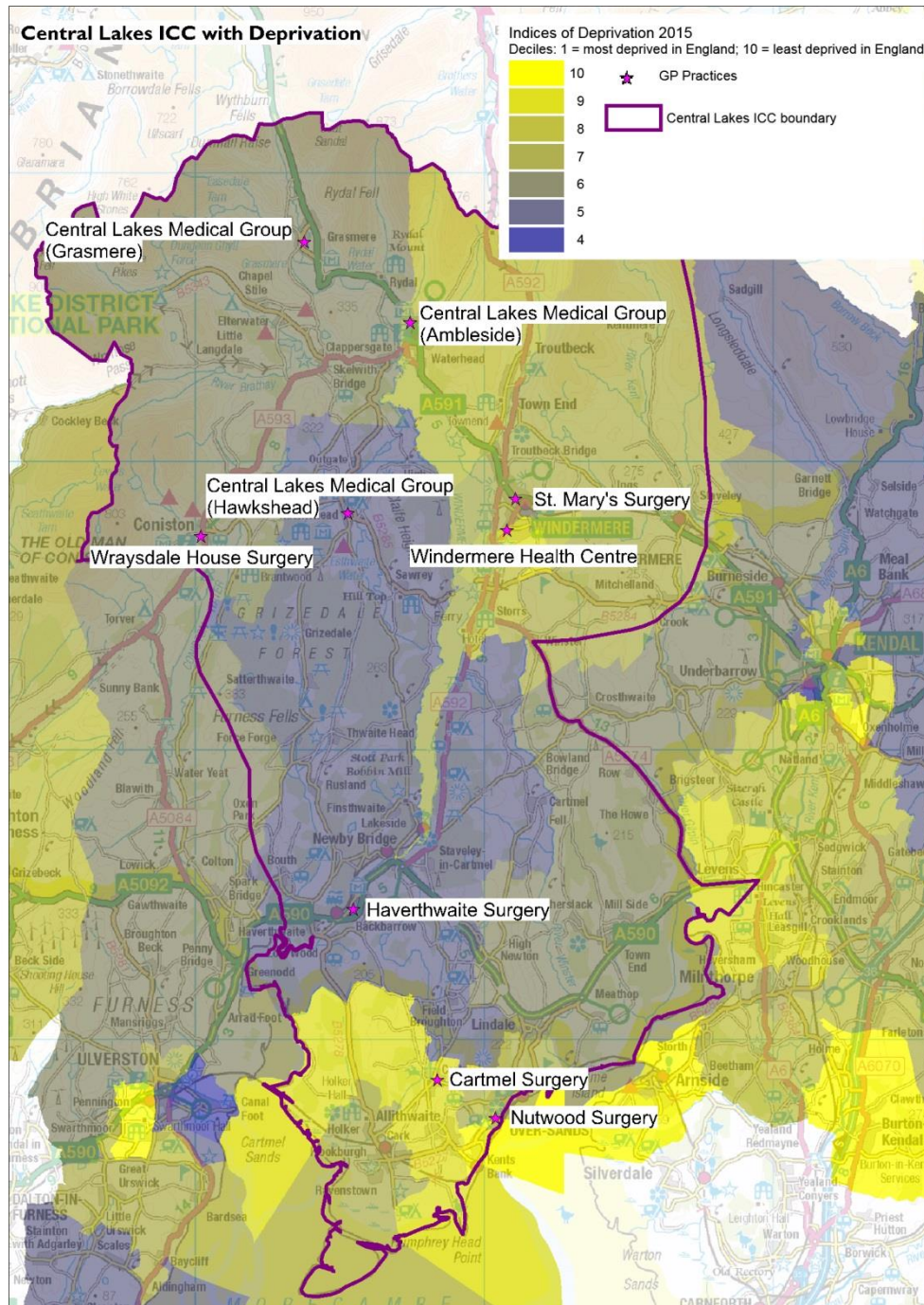


Central Lakes & Grange ICC

Figure 1: Central Lakes ICC with Indices of Deprivation 2015



(c) Crown Copyright and Database Right, 2017 Ordnance Survey Licence Number 100019596

Key issues

- Older population projected to increase; working age population projected to decrease in the district (South Lakeland)
- Elective hospital admissions for hip replacement worse than national average
- Greater % of patients on GP Registers with: hypertension; asthma; and dementia than the national average
- Rate of Adult Social Care Service users above county average
- Rate of “falls” call outs to NWS above county average

Central Lakes & Grange ICC

Key: Text in *blue* refers to *registered population*; text in *black* refers to *resident population*. Where possible, comparisons with South Cumbria have been included; as well as benchmarking data against the England average.

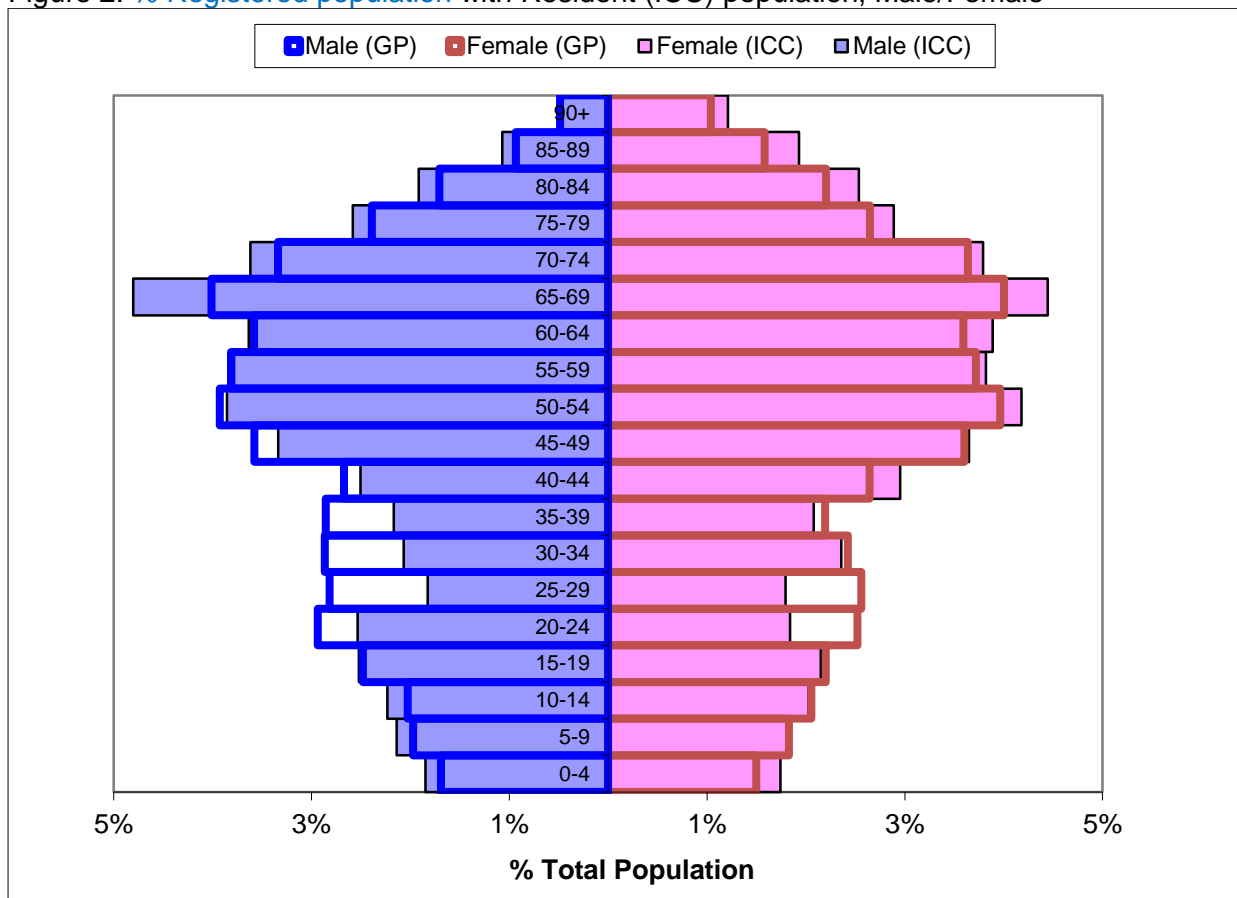
Table 1: Demographics, Central Lakes ICC

	ICC
Registered Population (total combined GPs within ICC)	31,854
Mid-Year Population, ONS 2015 (calculations based on % within ICC)	28,398
% 0-19 years	16.5%
% 15-64 years	56.9%
% 65+ years	31.3%
% 85+ years	4.7%
Black and Minority Ethnic (BME) Population (%)	1.8%
Population whose ethnicity is not 'White UK' (%)	6.1%
Proficiency in English (% of people who cannot speak English well or at all)	0.5%
Provision of 1 hour or more unpaid care per week (%)	12.0%
Provision of 50 hours or more unpaid care per week (%)	2.3%

Source: GP Population NHS Digital, July 2016

https://data.gov.uk/dataset/numbers_of_patients_registered_at_a_gp_practice ; Mid-Year Population Estimates, Office for National Statistics, 2015 <https://www.ons.gov.uk/> ; Census 2011 <https://www.ons.gov.uk/census/2011census>

Figure 2: % Registered population with Resident (ICC) population, Male/Female



Source: GP Population NHS Digital, July 2016; Mid-Year Population Estimates, Office for National Statistics, 2015

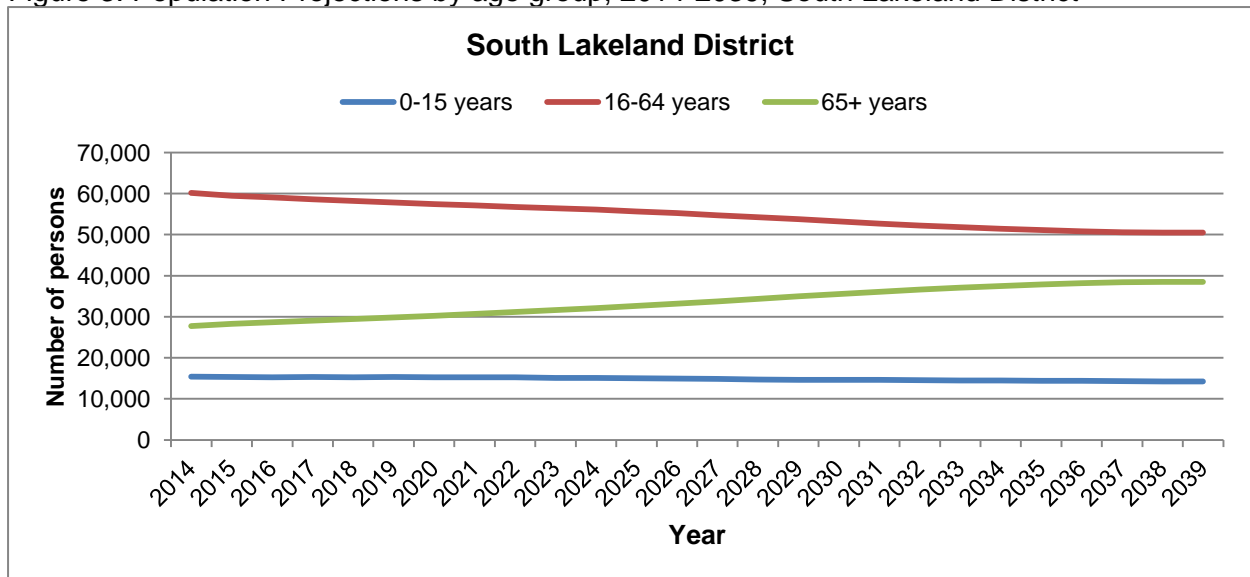
Central Lakes & Grange ICC

Table 2: Population Projections by age group, 2014-2039, South Lakeland District

	Population			Numerical Change		Proportional Change	
	2014	2019	2039	2014-2019	2014-2039	2014-2019	2014-2039
All Ages	103,271	102,958	103,168	-313	-103	-0.3	-0.1
0-15 years	15,381	15,306	14,228	-75	-1,153	-0.5	-7.5
16-64 years	60,143	57,799	50,470	-2,344	-9,673	-3.9	-16.1
65+	27,747	29,853	38,469	2,106	10,722	7.6	38.6

Source: 2014-Based Sub-National Population Projections, Office for National Statistics
<https://www.ons.gov.uk/peoplepopulationandcommunity/populationandmigration/populationprojections>

Figure 3: Population Projections by age group, 2014-2039, South Lakeland District



Source: 2014-Based Sub-National Population Projections, Office for National Statistics

Comparison with England:

● significantly worse ● significantly better ● not significantly different from average

Table 3: Socio-Economic

	Central Lakes ICC	South Cumbria	England
Unemployment (%) 2015-16	0.4%	1.5%	1.8%
Long Term Unemployment (Rate/1,000, 16-64 years) 2015-16	0.1	4.0%	4.3

Source: Local Health, Public Health England <http://www.localhealth.org.uk/>

Table 4: Lifestyle

	Central Lakes ICC	South Cumbria	England
Hospital stays for alcohol related harm (SAR) 2010/11-2014/15	90.6	110.8	100
Obese adults (%) 2006-2008	20.7%	23.0%	24.1%
Binge drinking adults (%) 2006-2008	24.4%	21.1%	20.0%
Healthy eating adults (%) 2006-2008	34.9%	29.1%	28.7%
Inactive < 30 mins moderate physical activity per week	19.2%	(Cumbria)	22.0%

Central Lakes & Grange ICC

(%) (Adults Aged 16+, 2015-2016) (District)		20.4%	
Fairly active 30-149 mins moderate physical activity per week (%) (Adults Aged 16+, 2015-2016) (District)	10.0%	(Cumbria) 12.3%	12.6%
Active = 150+ mins moderate physical activity per week (%) (Adults Aged 16+, 2015-2016) (District)	70.8%	(Cumbria) 67.3%	65.4%
Smoking prevalence in adults - current smokers (Adults Aged 18+, 2016) (District)	12.5%	(Cumbria) 15.5%	15.5%

Source: Local Health, Public Health England <http://www.localhealth.org.uk/> and Active Lives Survey <https://www.sportengland.org/research/active-lives-survey/> Public Health Outcomes Framework <http://fingertips.phe.org.uk/>

Table 5: Child health

	Central Lakes ICC	South Cumbria	England
Infant Mortality (rate per 1,000 live births) 2013-15 (District)	2.5		3.9
Low Birth Weight Births (%) 2010-14	6.0%	6.5%	7.4%
Child Development at age 5 (%) 2013-14	66.9%	59.7%	60.4%
GCSE Achievement (5A*-C inc. Eng & Maths) (%) 2013-14	57.2%	57.3%	56.6%
Obese Children (Reception Year) (%) 2012/13-2014/15	7.8%	10.6%	9.3%
Children with excess weight (Reception Year) (%) 2012/13-2014/15	20.0%	24.6%	22.2%
Obese Children (Year 6) (%) 2012/13-2014/15	18.4%	18.6%	19.0%
Children with excess weight (Year 6) (%) 2012/13-2014/15	33.5%	33.2%	33.4%
Deliveries to teenage mothers (%) 2010/11-2014/15	0	2.0%	1.2%

Source: Local Health, Public Health England <http://www.localhealth.org.uk/> . For trend data go here: <http://fingertips.phe.org.uk/>

Table 6: Emergency and Elective hospital admissions for hip fractures, Standardised Admission Ratios (SARs), 2010/11 to 2014/15

	Central Lakes ICC	South Cumbria	England
Emergency hospital admissions for hip fracture (65+yrs)	91.9	92.0	100
Elective hospital admissions for hip replacement	135.1	125.8	100

Source: Local Health, Public Health England <http://www.localhealth.org.uk/>

Table 7: Cancer incidence, Standardised Incidence Ratios (SIRs), 2010-2014

	Central Lakes ICC	South Cumbria	England
Incidence of all cancer	90.4	98.6	100
Incidence of breast cancer	104.6	101.7	100
Incidence of colorectal cancer	101.6	101.3	100
Incidence of lung cancer	60.3	86.2	100
Incidence of prostate cancer	88.7	87.7	100

Source: Local Health, Public Health England <http://www.localhealth.org.uk/>

Central Lakes & Grange ICC

Table 8: Life Expectancy (Years); mortality and cause of death, Standardised Mortality Ratios (SMRs), 2010-2014

	Central Lakes ICC	South Cumbria (Cumbria)	England
Life Expectancy at birth - MALE (2013-15) (District)	80.7	79.2	79.5
Life Expectancy at birth – FEMALE (2013-15) (District)	84.7	82.8	83.1
Healthy Life Expectancy at birth - MALE (2009-13) (District)	67.5	63.8	63.5
Healthy Life Expectancy at birth - MALE (2009-13) (District)	69.0	65.3	64.8
Deaths from all causes, under 75 years	77.0	97.7	100
Deaths from all cancer, under 75 years	79.1	95.2	100
Deaths from circulatory disease, under 75 years	71.6	97.7	100
Deaths from coronary heart disease, under 75 years	70.1	96.1	100
Deaths from stroke, all ages	100.8	116.8	100
Deaths from respiratory diseases, all ages	64.9	89.2	100

Source: Local Health, Public Health England <http://www.localhealth.org.uk/>

Table 9: Travel & Transport

	Central Lakes ICC	England
No cars or vans in household (%) (2011)	14.4%	25.8%
1+ car(s) or van(s) available in household (%) (2011)	85.6%	74.2%
Average travel times to key services - public transport/walking (mins) 2014 (District)	25.9	17.0
Average travel times to key services - car (mins) 2014 (District)	12.2	10.3

Source: Census 2011 <https://www.ons.gov.uk/census/2011census> ; Department for Transport, 2014. <https://www.gov.uk/government/collections/journey-time-statistics>

Table 10: Disease/condition prevalence. GP Practice Register(s) for diseases/conditions, 2015-16

	Central Lakes ICC		CCG		England	
	Number	%	Number	%	Number	%
Hypertension patients	5,444	17.09%	83,081	15.92%	7,949,274	13.81%
Diabetes patients	1,637	5.90%	31,467	7.27%	3,033,529	6.55%
Asthma patients	2,088	6.56%	34,613	6.63%	3,400,679	5.91%
Dementia patients	354	1.11%	5,118	0.98%	436,805	0.76%

Source: Quality Outcomes Framework, NHS Digital, 2015-16. <http://content.digital.nhs.uk/qof>

Health services use

Table 11: Health Services Activity: utilisation numbers and rates (per 1,000 population); year-to-date 2016-17 (to September)

	Number		Rate per 1,000	
	Central Lakes ICC	CCG	Central Lakes ICC	CCG
Non Elective	1,357	25,155	39.19	43.86
Total Electives	2,322	34,174	67.06	59.59
Total Outpatient Firsts	3,286	48,664	94.90	84.85
Total Outpatient Subsequent	5,163	49,050	149.10	85.52
Accident & Emergency Consultant Led Only	2,292	69,651	66.19	121.44

Source: NHS North of England Commissioning Support Unit (NECS). Glossary available.

Central Lakes & Grange ICC

Adult Social care

Table 12: Number and rate (per 10,000, 18+ population) of services commissioned, by ICC and Cumbria County Council, during Oct' 2015 – Sep' 2016

	Central Lakes ICC		Cumbria	
	Number	Rate	Number	Rate
Residential Care	118	41.6	2,409	48.4
Nursing Care	57	20.1	891	17.9
Homecare	218	76.8	3,850	77.3
Day Services	35	12.3	1,380	27.7
Reablement	157	55.3	2,384	47.9
Assistive Technology (Telecare)	129	45.4	1,221	24.5
Carers Budget/ ISF payments/ Direct payments	149	52.5	2,472	49.6
Total service users	663	233.5	10,826	217.4

Source: Adult Social Care, Cumbria County Council

Mental Health

Table 14: Numbers and rates (per 1,000) of A&E attendances for mental health conditions; NHS Cumbria CCG and GP Practice Based Localities, 2013-14 to 2015-16.

Locality	2013-14		2014-15		2015-16	
	Number	Rate	Number	Rate	Number	Rate
South Lakeland (Locality/District)	343	3.0	384	3.3	493	4.3
NHS Cumbria CCG	2,581	4.9	2,690	5.2	3,116	6.0

Source: North of England Commissioning Support (NECS) Information Service. Note: CCG total does not include those unassigned to a locality.

Table 15: Numbers & rates (per 1,000 GP population) of referrals to mental health services, 2015-16

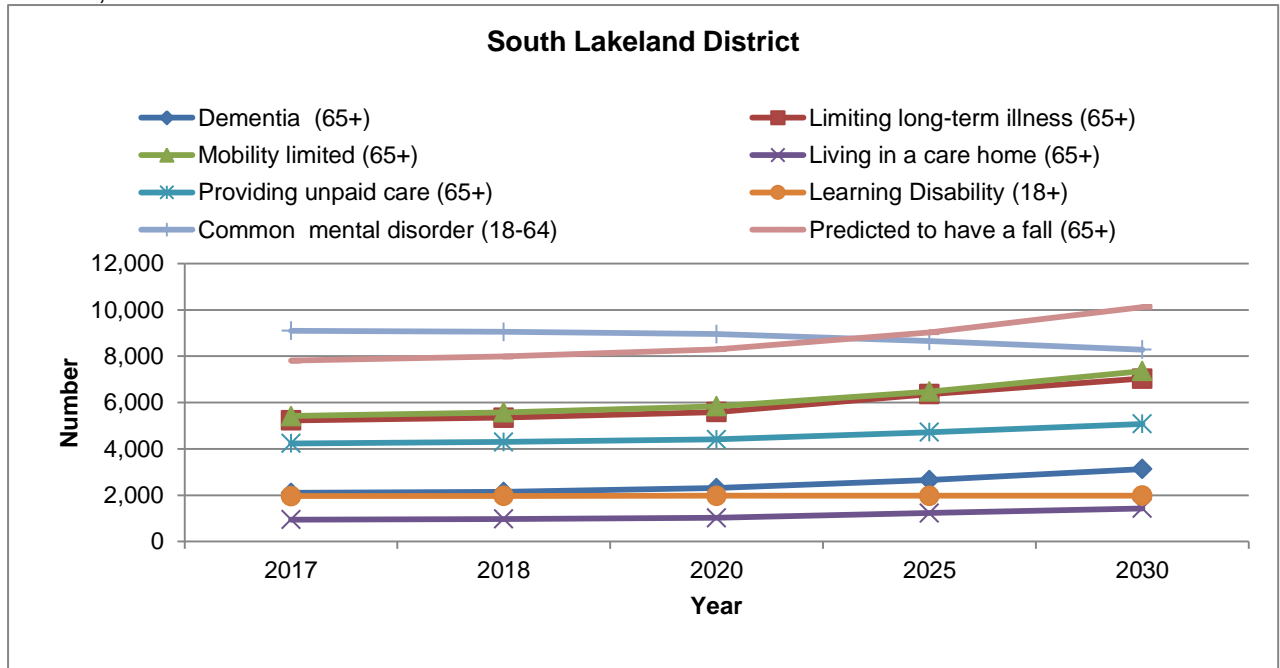
	Total referrals		Admitted		Only Non-Admitted		No Care	
	Number	Rate	Number	Rate	Number	Rate	Number	Rate
Central LakesGrange ICC	1,243	39.0	41	1.3	547	17.2	256	8.0
South Cumbria	8,983	45.1	326	1.6	3,743	18.8	1,993	10.0
Cumbria	26,915	51.5	884	1.7	12,349	23.7	5,492	10.5

Source: Cumbria Partnership NHS Foundation Trust

Central Lakes & Grange ICC

Health Projections

Figure 4: Health projections: number of residents with a health condition, South Lakeland District, 2017 – 2030



Source: Projecting Older Peoples Population Information (POPPI) <http://www.poppi.org.uk/>; and Projecting Adult Needs and Service Information System (PANSI) <http://www.pansi.org.uk/> [N.B health projections are determined by projected population figures only]

Table 16: Health projections: number of residents with a health condition, South Lakeland District, 2017 - 2030

	2017	2018	2020	2025	2030
Dementia (65+)	2,101	2,144	2,305	2,651	3,127
Limiting long-term illness (65+)	5,228	5,351	5,588	6,364	7,033
Mobility limited (65+)	5,418	5,574	5,838	6,476	7,359
Living in a care home (65+)	950	975	1,025	1,228	1,431
Providing unpaid care (65+)	4,236	4,296	4,407	4,717	5,076
Learning disability (18+)	1,962	1,968	1,974	1,973	1,980
Common mental disorder (18-64)	9,102	9,052	8,955	8,658	8,285
Predicted to have a fall (65+)	7,805	7,989	8,298	9,028	10,121
Predicted to be admitted to hospital as a result of falls (65+)	609	629	666	777	841

Source: Projecting Older Peoples Population Information (POPPI) <http://www.poppi.org.uk/>; and Projecting Adult Needs and Service Information System (PANSI) <http://www.pansi.org.uk/>

Central Lakes & Grange ICC

Falls

Table 17: Number and rate (per 1,000) of falls call-outs per year; average over period: April 2013 to March 2016

	Number		Rate per 1,000	
	Central Lakes ICC	Cumbria	Central Lakes ICC	Cumbria
Number of falls call outs (yearly average)	696	7,074	24.5	14.2

Source: Trauma and Injury Intelligence Group (TIIG)/North West Ambulance Service [based on the call out location, not the patient address]

Further information

Further information relating to each indicator for all ICCs, Cumbria and England (where available), including how calculations have been made can be found in the supporting ICC Workbook here: <https://www.cumbriaobservatory.org.uk/health-social-care/health-social-care-further-information/>

Joint Strategic Needs Assessment:

<http://www.cumbriaobservatory.org.uk/health/JSNA/2015/homepage.asp>

It is intended that these profiles will be updated on an annual basis; and will be further developed to include additional sources of data.