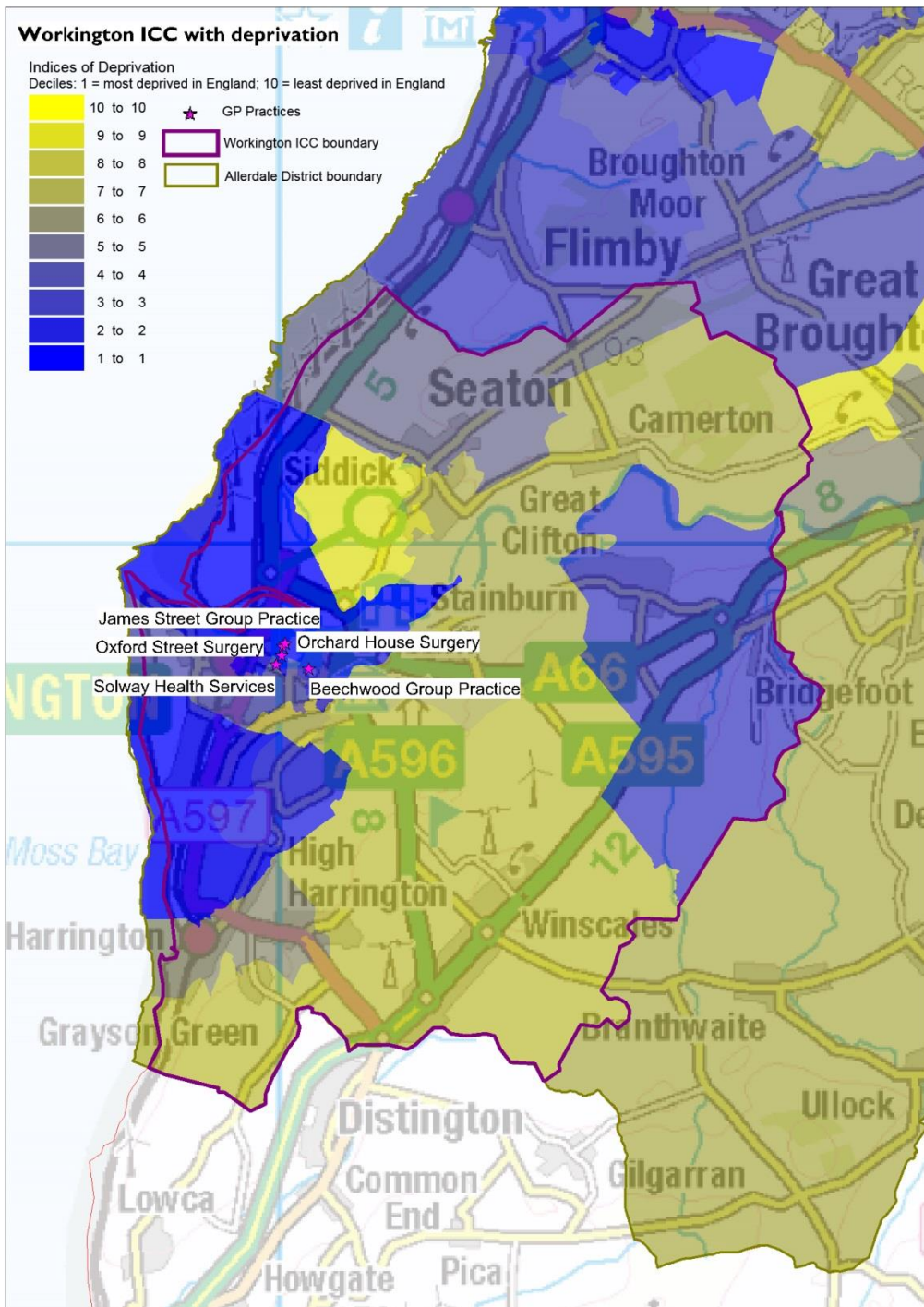


Workington ICC

Figure 1: Workington ICC with Indices of Deprivation 2015



(c) Crown Copyright and Database Right, 2017 Ordnance Survey Licence Number 100019596

Key issues

- Older population projected to increase in the district (Allerdale)
- Life Expectancy (males and females) in the district below the national average
- Unemployment worse than national average
- Hospital stays for alcohol related harm worse than national average
- Childhood obesity/excess weight worse than national average
- Incidence of lung cancer above national average
- Early mortality (under 75 years) above national average
- A&E use above Cumbria CCG average
- Greater % of patients on GP Registers with: hypertension; diabetes; and dementia than the national average

Workington ICC

Key: Text in *blue* refers to *registered population*; text in black refers to *resident population*. Where possible, comparisons with North Cumbria have been included; as well as benchmarking data against the England average.

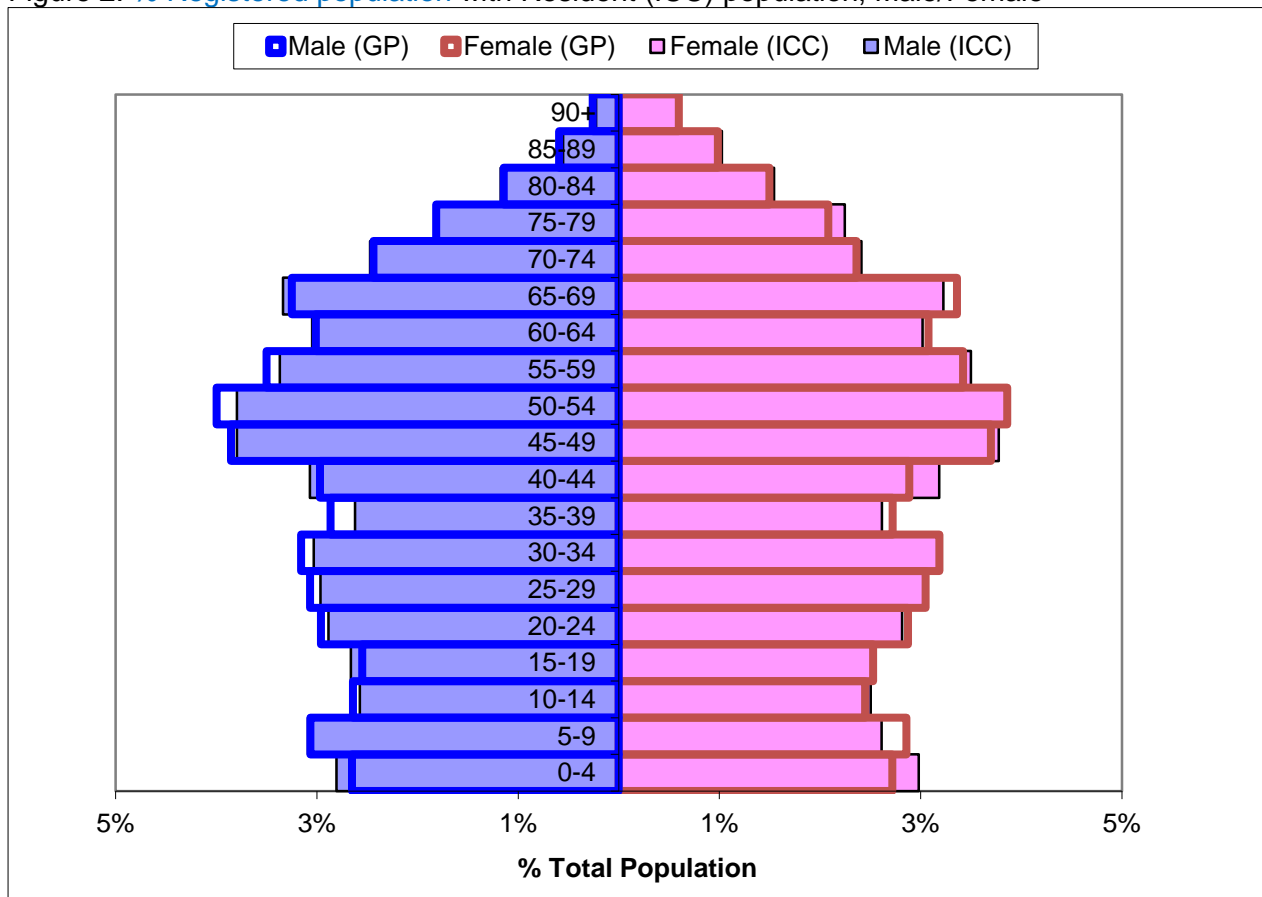
Table 1: Demographics, Workington ICC

	ICC
Registered Population (total combined GPs within ICC)	33,494
Mid-Year Population, ONS 2015 (calculations based on % within ICC)	32,249
% 0-19 years	21.8%
% 15-64 years	62.8%
% 65+ years	20.6%
% 85+ years	2.4%
Black and Minority Ethnic (BME) Population (%)	1.0%
Population whose ethnicity is not 'White UK' (%)	1.8%
Proficiency in English (% of people who cannot speak English well or at all)	0.2%
Provision of 1 hour or more unpaid care per week (%)	11.1%
Provision of 50 hours or more unpaid care per week (%)	2.9%

Source: GP Population NHS Digital, July 2016

https://data.gov.uk/dataset/numbers_of_patients_registered_at_a_gp_practice ; Mid-Year Population Estimates, Office for National Statistics, 2015 <https://www.ons.gov.uk/> ; Census 2011 <https://www.ons.gov.uk/census/2011census>

Figure 2: % Registered population with Resident (ICC) population, Male/Female



Source: GP Population NHS Digital, July 2016; Mid-Year Population Estimates, Office for National Statistics, 2015

Workington ICC

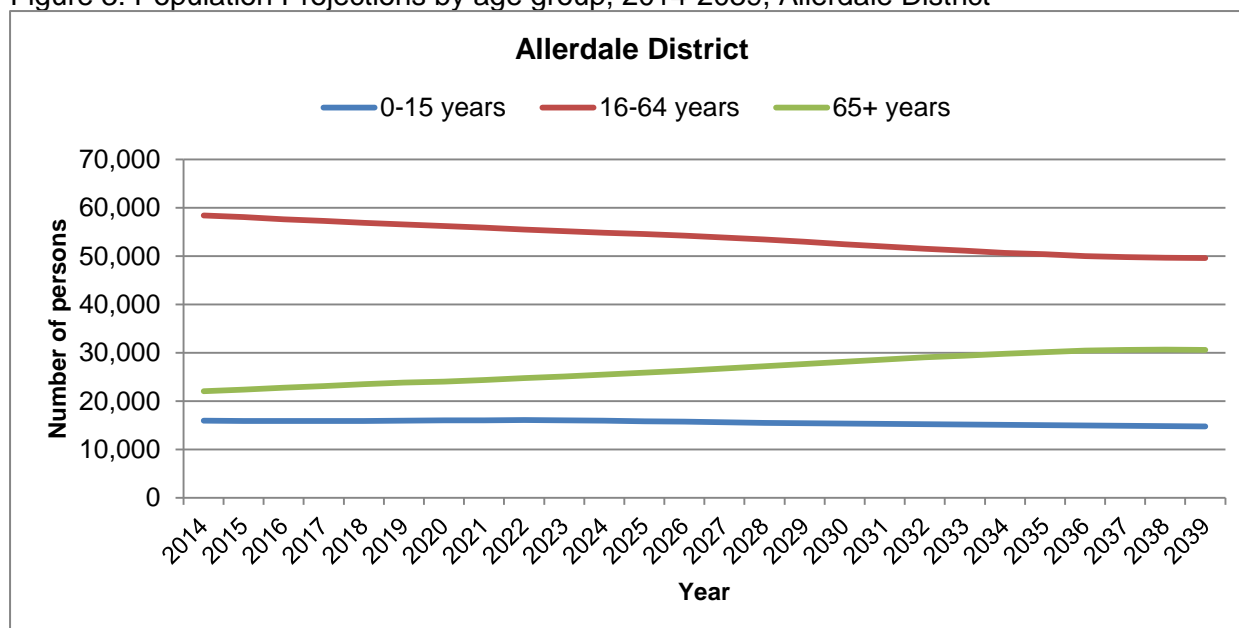
Table 2: Population Projections by age group, 2014-2039, Allerdale District

	Population			Numerical Change		Proportional Change	
	2014	2019	2039	2014-2019	2014-2039	2014-2019	2014-2039
All Ages	96,471	96,278	94,978	-193	-1,493	-0.2	-1.5
0-15 years	15,956	15,947	14,746	-9	-1,210	-0.1	-7.6
16-64 years	58,447	56,534	49,631	-1,913	-8,816	-3.3	-15.1
65+	22,068	23,796	30,600	1,728	8,532	7.8	38.7

Source: 2014-Based Sub-National Population Projections, Office for National Statistics

<https://www.ons.gov.uk/peoplepopulationandcommunity/populationandmigration/populationprojections>

Figure 3: Population Projections by age group, 2014-2039, Allerdale District



Source: 2014-Based Sub-National Population Projections, Office for National Statistics

Comparison with England:

● significantly worse ● significantly better ● not significantly different from average

Table 3: Socio-Economic

	Workington ICC	North Cumbria	England
Unemployment (%) 2015-16	2.9	1.5%	1.8%
Long Term Unemployment (Rate/1,000, 16-64 years) 2015-16	9.2	3.9	4.3

Source: Local Health, Public Health England <http://www.localhealth.org.uk/>

Table 4: Lifestyle

	Workington ICC	North Cumbria	England
Hospital stays for alcohol related harm (SAR) 2010/11-2014/15	156.7	127.2	100
Obese adults (%) 2006-2008	26.1%	24.6%	24.1%
Binge drinking adults (%) 2006-2008	20.6%	22.1%	20.0%
Healthy eating adults (%) 2006-2008	23.6%	28.1%	28.7%

Workington ICC

Inactive < 30 mins moderate physical activity per week (%) (Adults Aged 16+, 2015-2016) (District)	16.8%	(Cumbria) 20.4%	22.0%
Fairly active 30-149 mins moderate physical activity per week (%) (Adults Aged 16+, 2015-2016) (District)	13.1%	(Cumbria) 12.3%	12.6%
Active = 150+ mins moderate physical activity per week (%) (Adults Aged 16+, 2015-2016) (District)	70.1%	(Cumbria) 67.3%	65.4%
Smoking prevalence in adults - current smokers (Adults Aged 18+, 2016) (District)	17.7%	(Cumbria) 15.5%	15.5%

Source: Local Health, Public Health England <http://www.localhealth.org.uk/> and Active Lives Survey <https://www.sportengland.org/research/active-lives-survey/> Public Health Outcomes Framework <http://fingertips.phe.org.uk/>

Table 5: Child health

	<i>Workington ICC</i>	<i>North Cumbria</i>	<i>England</i>
Infant Mortality (rate per 1,000 live births) 2013-15 (District)	3.7		3.9
Low Birth Weight Births (%) 2010-14	7.6%	7.1%	7.4%
Child Development at age 5 (%) 2013-14	51.6%	58.2%	60.4%
GCSE Achievement (5A*-C inc. Eng & Maths) (%) 2013-14	56.7%	56.2%	56.6%
Obese Children (Reception Year) (%) 2012/13-2014/15	9.7%	9.9%	9.3%
Children with excess weight (Reception Year) (%) 2012/13-2014/15	24.3%	24.7%	22.2%
Obese Children (Year 6) (%) 2012/13-2014/15	24.2%	20.0%	19.0%
Children with excess weight (Year 6) (%) 2012/13-2014/15	38.1%	35.2%	33.4%
Deliveries to teenage mothers (%) 2010/11-2014/15	1.6%		1.2%

Source: Local Health, Public Health England <http://www.localhealth.org.uk/> . For trend data go here: <http://fingertips.phe.org.uk/>

Table 6: Emergency and Elective hospital admissions for hip fractures, Standardised Admission Ratios (SARs), 2010/11 to 2014/15

	<i>Workington ICC</i>	<i>North Cumbria</i>	<i>England</i>
Emergency hospital admissions for hip fracture (65+yrs)	112.4	103.7	100
Elective hospital admissions for hip replacement	105.4	122.7	100

Source: Local Health, Public Health England <http://www.localhealth.org.uk/>

Table 7: Cancer incidence, Standardised Incidence Ratios (SIRs), 2010-2014

	<i>Workington ICC</i>	<i>North Cumbria</i>	<i>England</i>
Incidence of all cancer	105.5	99.4	100
Incidence of breast cancer	106.0	101.5	100
Incidence of colorectal cancer	102.1	102.3	100
Incidence of lung cancer	126.3	97.2	100
Incidence of prostate cancer	101.9	106.3	100

Source: Local Health, Public Health England <http://www.localhealth.org.uk/>

Workington ICC

Table 8: Life Expectancy (Years); mortality and cause of death, Standardised Mortality Ratios (SMRs), 2010-2014

	Workington ICC	North Cumbria	England
Life Expectancy at birth - MALE (2013-15) (District)	78.9	(Cumbria) 79.2	79.5
Life Expectancy at birth – FEMALE (2013-15) (District)	82.3	(Cumbria) 82.8	83.1
Healthy Life Expectancy at birth - MALE (2009-13) (District)	63.4	(Cumbria) 63.8	63.5
Healthy Life Expectancy at birth - MALE (2009-13) (District)	64.8	(Cumbria) 65.3	64.8
Deaths from all causes, under 75 years	129.0	104.4	100
Deaths from all cancer, under 75 years	135.6	103.7	100
Deaths from circulatory disease, under 75 years	133.3	103.3	100
Deaths from coronary heart disease, under 75 years	148.7	112.8	100
Deaths from stroke, all ages	137.3	110.9	100
Deaths from respiratory diseases, all ages	103.0	97	100

Source: Local Health, Public Health England <http://www.localhealth.org.uk/>

Table 9: Travel & Transport

	Workington ICC	England
No cars or vans in household (%) (2011)	27.1%	25.8%
1+ car(s) or van(s) available in household (%) (2011)	72.9%	74.2%
Average travel times to key services - public transport/walking (mins) 2014 (District)	25.9	17.0
Average travel times to key services - car (mins) 2014 (District)	12.5	10.3

Source: Census 2011 <https://www.ons.gov.uk/census/2011census> ; Department for Transport, 2014. <https://www.gov.uk/government/collections/journey-time-statistics>

Table 10: Disease/condition prevalence. GP Practice Register(s) for diseases/conditions, 2015-16

	Workington ICC		CCG		England	
	Number	%	Number	%	Number	%
Hypertension patients	4,961	14.80%	83,081	15.92%	7,949,274	13.81%
Diabetes patients	2,134	7.80%	31,467	7.27%	3,033,529	6.55%
Asthma patients	1,957	5.84%	34,613	6.63%	3,400,679	5.91%
Dementia patients	283	0.84%	5,118	0.98%	436,805	0.76%

Source: Quality Outcomes Framework, NHS Digital, 2015-16. <http://content.digital.nhs.uk/qof>

Health services use

Table 11: Health Services Activity: utilisation numbers and rates (per 1,000 population); year-to-date 2016-17 (to September)

	Number		Rate per 1,000	
	Workington ICC	CCG	Workington ICC	CCG
Non Elective	1,604	25,155	43.54	43.86
Total Electives	2,083	34,174	56.54	59.59
Total Outpatient Firsts	3,537	48,664	96.01	84.85
Total Outpatient Subsequent	1,806	49,050	49.02	85.52
Accident & Emergency Consultant Led Only	4,651	69,651	126.25	121.44

Source: NHS North of England Commissioning Support Unit (NECS). Glossary available.

Workington ICC

Adult Social care

Table 12: Number and rate (per 10,000, 18+ population) of services commissioned, by ICC and Cumbria County Council, during Oct' 2015 – Sep' 2016

	Workington ICC		Cumbria	
	Number	Rate	Number	Rate
Residential Care	246	76.3	2,409	48.4
Nursing Care	40	12.4	891	17.9
Homecare	209	64.8	3,850	77.3
Day Services	120	37.2	1,380	27.7
Reablement	241	74.7	2,384	47.9
Assistive Technology (Telecare)	77	23.9	1,221	24.5
Carers Budget/ISF payments/ Direct payments	180	55.8	2,472	49.6
Total service users	786	243.7	10,826	217.4

Source: Adult Social Care, Cumbria County Council

Mental Health

Table 13: Numbers and rates (per 1,000) of A&E attendances for mental health conditions; NHS Cumbria CCG and GP Practice Based Localities, 2013-14 to 2015-16.

Locality	2013-14		2014-15		2015-16	
	Number	Rate	Number	Rate	Number	Rate
Allerdale (Locality/District)	410	3.9	422	4.0	547	5.2
NHS Cumbria CCG	2,581	4.9	2,690	5.2	3,116	6.0

Source: North of England Commissioning Support (NECS) Information Service. Note: CCG total does not include those unassigned to a locality.

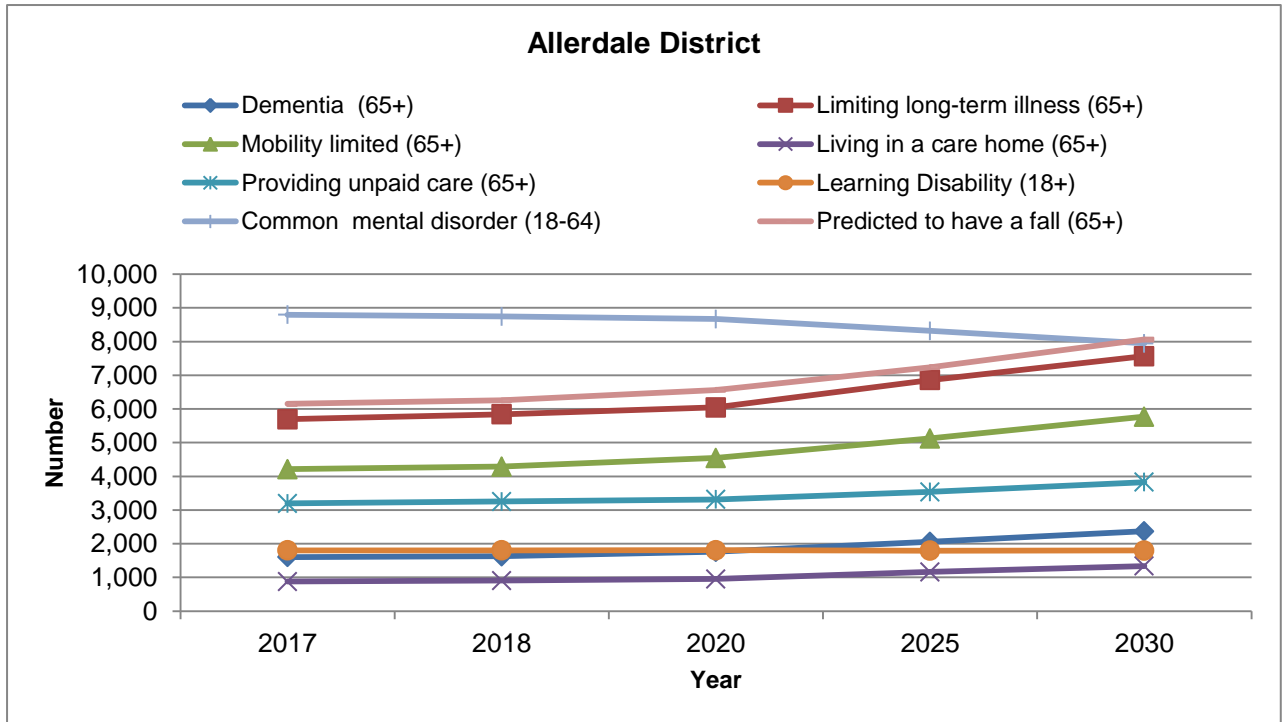
Table 14: Numbers & rates (per 1,000 GP population) of referrals to mental health services, 2015-16

	Total referrals		Admitted		Only Non-Admitted		No Care	
	Number	Rate	Number	Rate	Number	Rate	Number	Rate
Workington ICC	1,910	57.0	53	1.6	902	26.9	367	11.0
North Cumbria	16,378	50.7	457	1.4	7,355	22.8	3,297	10.2
Cumbria	26,915	51.5	884	1.7	12,349	23.7	5,492	10.5

Source: Cumbria Partnership NHS Foundation Trust

Health Projections

Figure 4: Health projections: number of residents with a health condition, Allerdale District, 2017 – 2030



Source: Projecting Older Peoples Population Information (POPPI) <http://www.poppi.org.uk/>; and Projecting Adult Needs and Service Information System (PANSI) <http://www.pansi.org.uk/> [N.B health projections are determined by projected population figures only]

Table 15: Health projections: number of residents with a health condition, Allerdale District, 2017 - 2030

	2017	2018	2020	2025	2030
Dementia (65+)	1,603	1,630	1,762	2,058	2,371
Limiting long-term illness (65+)	5,696	5,844	6,049	6,859	7,567
Mobility limited (65+)	4,215	4,291	4,546	5,126	5,772
Living in a care home (65+)	877	905	953	1,162	1,340
Providing unpaid care (65+)	3,196	3,252	3,314	3,541	3,827
Learning disability (18+)	1,805	1,805	1,809	1,797	1,801
Common mental disorder (18-64)	8,798	8,746	8,669	8,320	7,946
Predicted to have a fall (65+)	6,151	6,257	6,565	7,240	8,061
Predicted to be admitted to hospital as a result of falls (65+)	481	497	521	610	666

Source: Projecting Older Peoples Population Information (POPPI) <http://www.poppi.org.uk/> ; and Projecting Adult Needs and Service Information System (PANSI) <http://www.pansi.org.uk/>

Workington ICC

Falls

Table 16: Number and rate (per 1,000) of falls call-outs per year; average over period: April 2013 to March 2016

	<i>Number</i>		<i>Rate per 1,000</i>	
	<i>Workington ICC</i>	<i>Cumbria</i>	<i>Workington ICC</i>	<i>Cumbria</i>
Number of falls call outs (yearly average)	428	7,074	13.3	14.2

Source: Trauma and Injury Intelligence Group (TIIG)/North West Ambulance Service [based on the call out location, not the patient address]

Further information

Further information relating to each indicator for all ICCs, Cumbria and England (where available), including how calculations have been made can be found in the supporting ICC Workbook here: <https://www.cumbriaobservatory.org.uk/health-social-care/health-social-care-further-information/>

Joint Strategic Needs Assessment:

<http://www.cumbriaobservatory.org.uk/health/JSNA/2015/homepage.asp>

It is intended that these profiles will be updated on an annual basis; and will be further developed to include additional sources of data.