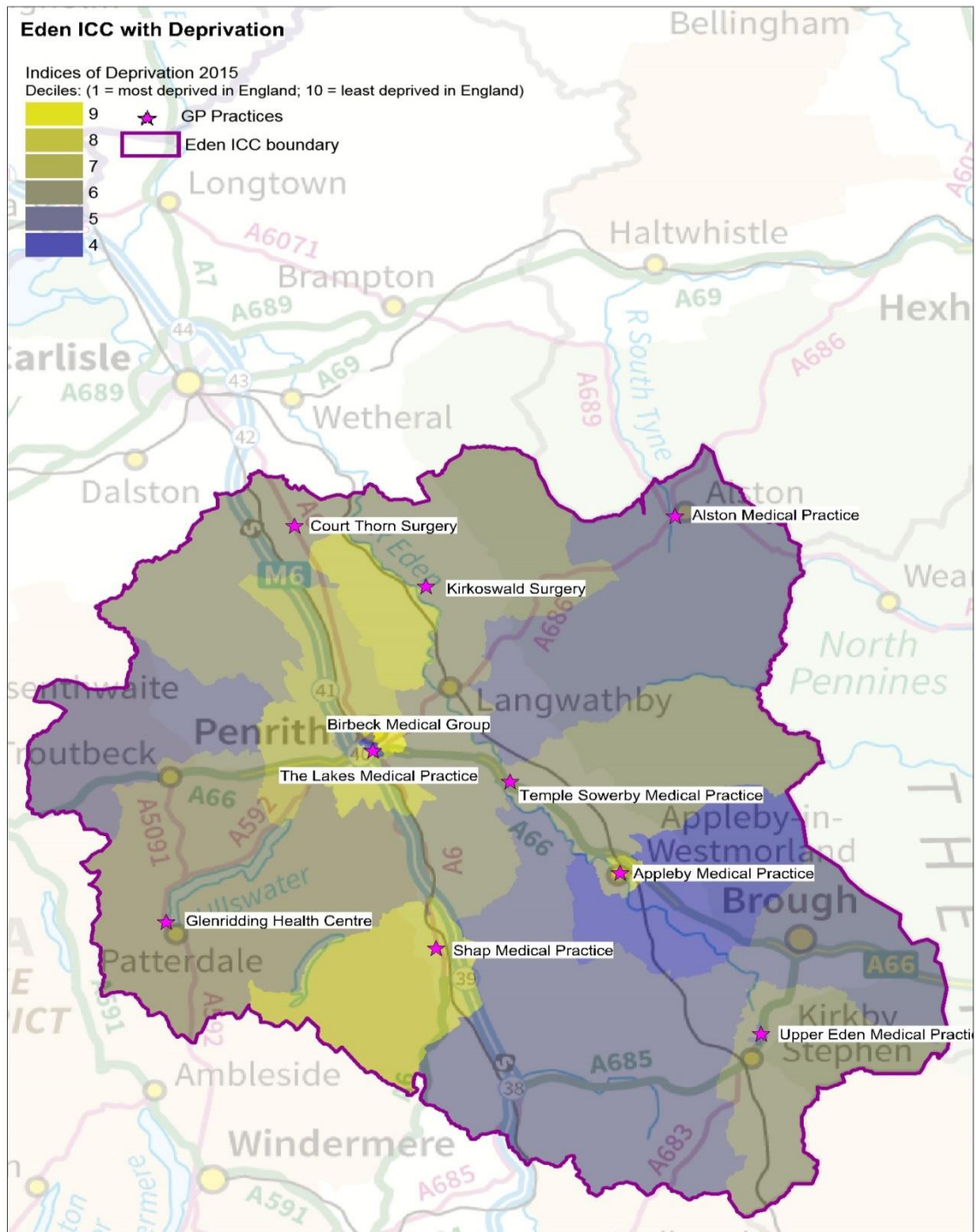


Eden ICC

Figure 1: Eden ICC with Indices of Deprivation 2015



(c) Crown Copyright and Database Right, 2017 Ordnance Survey Licence Number 100019596

Key issues

- Older population projected to increase significantly in the district (Eden)
- Levels of “elective hospital admissions for hip replacements” are higher than the national average
- Levels of childhood obesity are high
- Incidence of prostate cancer are higher than the national average
- Greater % of patients on GP Registers with: hypertension; diabetes; asthma; and dementia than the national average
- Travel times to key services are greater than the national average

Eden ICC

Key: Text in *blue* refers to *registered population*; text in black refers to *resident population*. Where possible, comparisons with North Cumbria have been included; as well as benchmarking data against the England average.

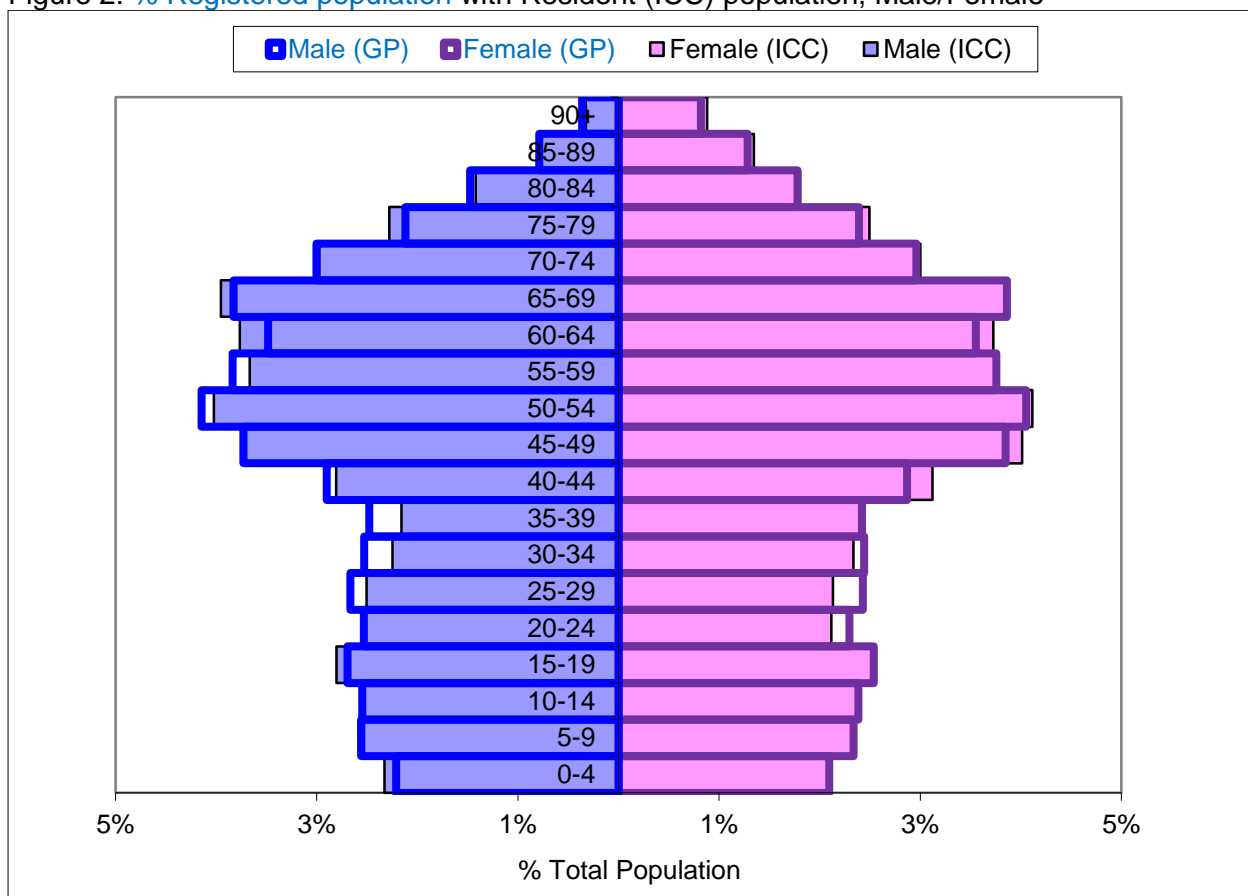
Table 1: Demographics, Eden ICC

	ICC
Registered Population (total combined GPs within ICC)	52,135
Mid-Year Population, ONS 2015 (calculations based on % within ICC)	52,565
% 0-19 years	19.6
% 15-64 years	60.6
% 65+ years	25.1
% 85+ years	3.3
Black and Minority Ethnic (BME) Population (%)	1.1
Population whose ethnicity is not 'White UK' (%)	3.0
Proficiency in English (% of people who cannot speak English well or at all)	0.3
Provision of 1 hour or more unpaid care per week (%)	11.3
Provision of 50 hours or more unpaid care per week (%)	2.2

Source: GP Population NHS Digital, July 2016

https://data.gov.uk/dataset/numbers_of_patients_registered_at_a_gp_practice ; Mid-Year Population Estimates, Office for National Statistics, 2015 <https://www.ons.gov.uk/> ; Census 2011 <https://www.ons.gov.uk/census/2011census>

Figure 2: % Registered population with Resident (ICC) population, Male/Female



Source: GP Population NHS Digital, July 2016; Mid-Year Population Estimates, Office for National Statistics, 2015

Eden ICC

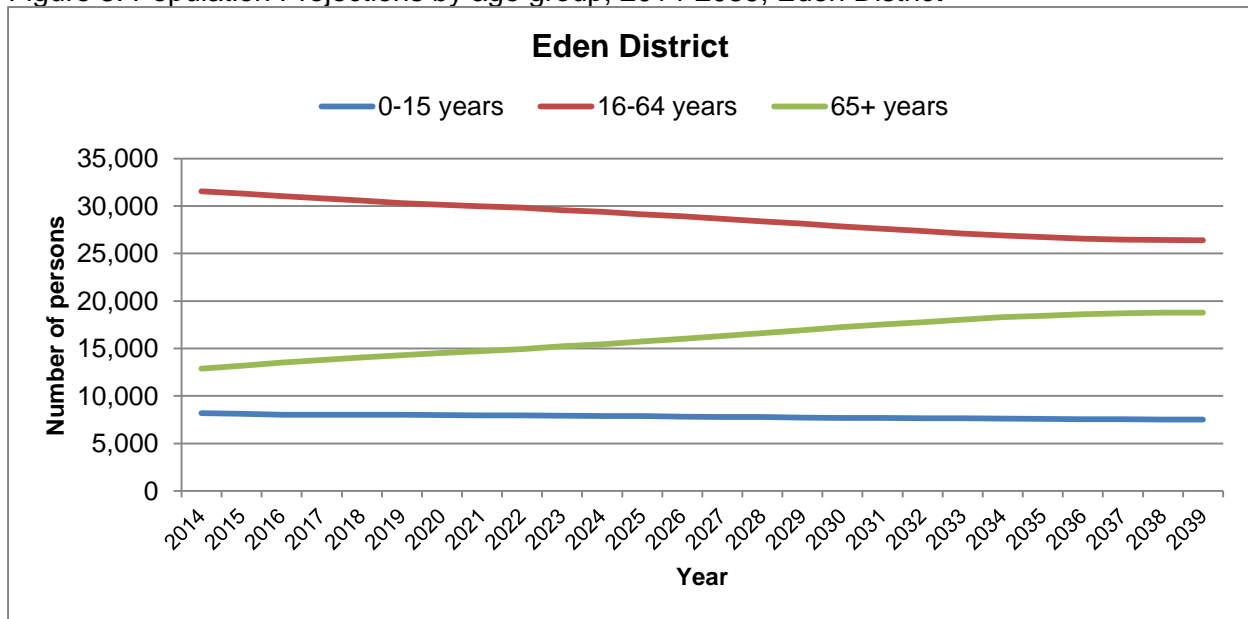
Table 2: Population Projections by age group, 2014-2039, Eden District

	Population			Numerical Change		Proportional Change	
	2014	2019	2039	2014-2019	2014-2039	2014-2019	2014-2039
All Ages	52,630	52,641	52,680	11	50	0.0%	0.1%
0-15 years	8,184	8,034	7,501	-150	-683	-1.8%	-8.3%
16-64 years	31,567	30,314	26,408	-1,253	-5,159	-4.0%	-16.3%
65+	12,879	14,292	18,769	1,413	5,890	11.0%	45.7%

Source: 2014-Based Sub-National Population Projections, Office for National Statistics

<https://www.ons.gov.uk/peoplepopulationandcommunity/populationandmigration/populationprojections>

Figure 3: Population Projections by age group, 2014-2039, Eden District



Source: 2014-Based Sub-National Population Projections, Office for National Statistics

Comparison with England:

● significantly worse ● significantly better ● not significantly different from average

Table 3: Socio-Economic

	Eden ICC	North Cumbria	England
Unemployment (%) 2015-16	0.6%	1.5%	1.8%
Long Term Unemployment (Rate/1,000, 16-64 years) 2015-16	1	3.9	4.3

Source: Local Health, Public Health England <http://www.localhealth.org.uk/>

Table 4: Lifestyle

	Eden ICC	North Cumbria	England
Hospital stays for alcohol related harm (SAR) 2010/11-2014/15	101	127.2	100
Obese adults (%) 2006-2008	23.8%	24.6%	24.1%
Binge drinking adults (%) 2006-2008	22.8%	22.1%	20.0%
Healthy eating adults (%) 2006-2008	31.7%	28.1%	28.7%

Eden ICC

Inactive < 30 mins moderate physical activity per week (%) (Adults Aged 16+, 2015-2016) (District)	20.1%	(Cumbria) 20.4%	22.0%
Fairly active 30-149 mins moderate physical activity per week (%) (Adults Aged 16+, 2015-2016) (District)	9.5%	(Cumbria) 12.3%	12.6%
Active = 150+ mins moderate physical activity per week (%) (Adults Aged 16+, 2015-2016) (District)	70.5%	(Cumbria) 67.3%	65.4%
Smoking prevalence in adults - current smokers (Adults Aged 18+, 2016) (District)	18.6%	(Cumbria) 15.5%	15.5%

Source: Local Health, Public Health England <http://www.localhealth.org.uk/> and Active Lives Survey <https://www.sportengland.org/research/active-lives-survey/> Public Health Outcomes Framework <http://fingertips.phe.org.uk/>

Table 5: Child health

	<i>Eden ICC</i>	<i>North Cumbria</i>	<i>England</i>
Infant Mortality (rate per 1,000 live births) 2013-15 (District)	0.8		3.9
Low Birth Weight Births (%) 2010-14	6.1%	7.1%	7.4%
Child Development at age 5 (%) 2013-14	64.2%	58.2%	60.4%
GCSE Achievement (5A*-C inc. Eng & Maths) (%) 2013-14	62.6%	56.2%	56.6%
Obese Children (Reception Year) (%) 2012/13-2014/15	9.5%	9.9%	9.3%
Children with excess weight (Reception Year) (%) 2012/13-2014/15	25.0%	24.7%	22.2%
Obese Children (Year 6) (%) 2012/13-2014/15	17.6%	20.0%	19.0%
Children with excess weight (Year 6) (%) 2012/13-2014/15	33.7%	35.2%	33.4%
Deliveries to teenage mothers (%) 2010/11-2014/15	1.5%		1.2%

Source: Local Health, Public Health England <http://www.localhealth.org.uk/> . For trend data go here: <http://fingertips.phe.org.uk/>

Table 6: Emergency and Elective hospital admissions for hip fractures, Standardised Admission Ratios (SARs), 2010/11 to 2014/15

	<i>Eden ICC</i>	<i>North Cumbria</i>	<i>England</i>
Emergency hospital admissions for hip fracture (65+yrs)	90.6	103.7	100
Elective hospital admissions for hip replacement	144	122.7	100

Source: Local Health, Public Health England <http://www.localhealth.org.uk/>

Table 7: Cancer incidence, Standardised Incidence Ratios (SIRs), 2010-2014

	<i>Eden ICC</i>	<i>North Cumbria</i>	<i>England</i>
Incidence of all cancer	95.0	99.4	100
Incidence of breast cancer	98.7	101.5	100
Incidence of colorectal cancer	91.2	102.3	100
Incidence of lung cancer	76.5	97.2	100
Incidence of prostate cancer	123.1	106.3	100

Source: Local Health, Public Health England <http://www.localhealth.org.uk/>

Eden ICC

Table 8: Life Expectancy (Years); mortality and cause of death, Standardised Mortality Ratios (SMRs), 2010-2014

	<i>Eden ICC</i>	<i>North Cumbria</i>	<i>England</i>
Life Expectancy at birth - MALE (2012-14) (District)	80.7	(Cumbria) 79.2	79.5
Life Expectancy at birth – FEMALE (2012-14) (District)	84.7	(Cumbria) 82.8	83.1
Healthy Life Expectancy at birth - MALE (2009-13) (District)	67.0	(Cumbria) 63.8	63.5
Healthy Life Expectancy at birth - MALE (2009-13) (District)	68.4	(Cumbria) 65.3	64.8
Deaths from all causes, under 75 years	81.8	104.4	100
Deaths from all cancer, under 75 years	84.6	103.7	100
Deaths from circulatory disease, under 75 years	79.2	103.3	100
Deaths from coronary heart disease, under 75 years	77.9	112.8	100
Deaths from stroke, all ages	104.4	110.9	100
Deaths from respiratory diseases, all ages	80.4	97	100

Source: Local Health, Public Health England <http://www.localhealth.org.uk/>

Table 9: Travel & Transport

	<i>Eden ICC</i>	<i>England</i>
No cars or vans in household (%) (2011)	13.9%	25.8%
1+ car(s) or van(s) available in household (%) (2011)	86.1%	74.2%
Average travel times to key services - public transport/walking (mins) 2014 (District)	36.9	17.0
Average travel times to key services - car (mins) 2014 (District)	13.3	10.3

Source: Census 2011 <https://www.ons.gov.uk/census/2011census> ; Department for Transport, 2014. <https://www.gov.uk/government/collections/journey-time-statistics>

Table 10: Disease/condition prevalence. GP Practice Register(s) for diseases/conditions, 2015-16

	<i>Eden ICC</i>		<i>CCG</i>		<i>England</i>	
	Number	%	Number	%	Number	%
Hypertension patients	8,218	15.77%	83,081	15.92%	7,949,274	13.81%
Diabetes patients	3,060	7.01%	31,467	7.27%	3,033,529	6.55%
Asthma patients	3,191	6.12%	34,613	6.63%	3,400,679	5.91%
Dementia patients	453	0.87%	5,118	0.98%	436,805	0.76%

Source: Quality Outcomes Framework, NHS Digital, 2015-16. <http://content.digital.nhs.uk/qof>

Health services use

Table 11: Health Services Activity: utilisation numbers and rates (per 1,000 population); year-to-date 2016-17 (to September)

	<i>Number</i>		<i>Rate per 1,000</i>	
	<i>Eden ICC</i>	<i>CCG</i>	<i>Eden ICC</i>	<i>CCG</i>
Non Elective	2,075	25,155	35.97	43.86
Total Electives	3,175	34,174	55.04	59.59
Total Outpatient Firsts	4,132	48,664	71.63	84.85
Total Outpatient Subsequent	3,500	49,050	60.68	85.52
Accident & Emergency Consultant Led Only	3,680	69,651	63.80	121.44

Source: NHS North of England Commissioning Support Unit (NECS). Glossary available.

Eden ICC

Adult Social care

Table 12: Number and rate (per 10,000, 18+ population) of services commissioned, by ICC and Cumbria County Council, during Oct' 2015 – Sep' 2016

	Eden ICC		Cumbria	
	Number	Rate per 10,000	Number	Rate per 10,000
Residential Care	181	34.4	2,409	48.4
Nursing Care	40	7.6	891	17.9
Homecare	383	72.9	3,850	77.3
Day Services	88	16.7	1,380	27.7
Reablement	209	39.8	2,384	47.9
Assistive Technology (Telecare)	104	19.8	1,221	24.5
Carers Budget/ ISF payments/ Direct payments	305	58.0	2,472	49.6
Total service users	978	186.1	10,826	217.4

Source: Adult Social Care, Cumbria County Council

Table 13: Number of children on the Transition Register by year the child turns 18 years, March 2017

	Year			
	2017	2018	2019	2020
Number of children on the Transition Register	8	14	9	9

Source: Cumbria County Council *numbers less than 5 have been suppressed

Mental Health

Table 14: Numbers and rates (per 1,000) of A&E attendances for mental health conditions; NHS Cumbria CCG and GP Practice Based Localities, 2013-14 to 2015-16.

Locality	2013-14		2014-15		2015-16	
	Number	Rate	Number	Rate	Number	Rate
Eden (Locality/District)	104	2.0	127	2.5	124	2.4
NHS Cumbria CCG	2,581	4.9	2,690	5.2	3,116	6.0

Source: North of England Commissioning Support (NECS) Information Service. Note: CCG total does not include those unassigned to a locality.

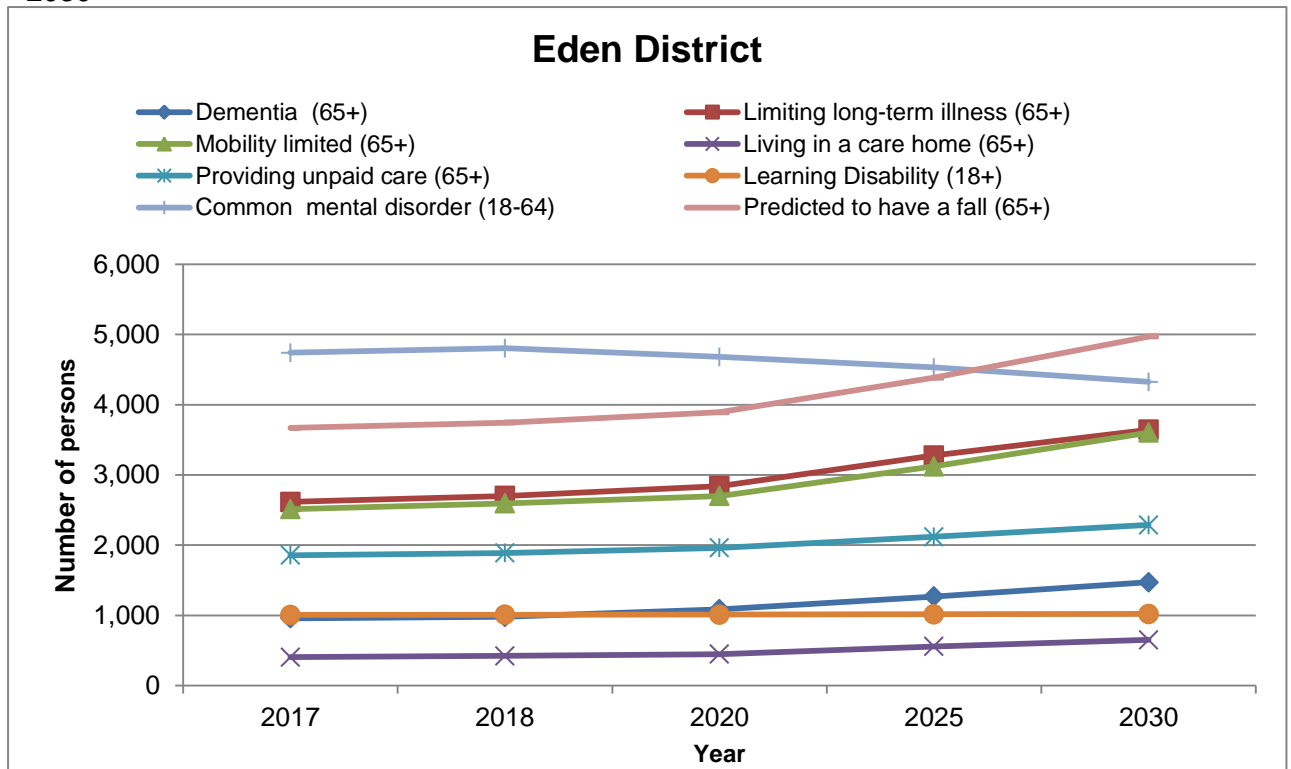
Table 15: Numbers & rates (per 1,000 GP population) of referrals to mental health services, 2015-16

	Total referrals		Admitted		Only Non-Admitted		No Care	
	Number	Rate	Number	Rate	Number	Rate	Number	Rate
ICC	2,000	38.4	54	1.0	845	16.2	367	7.0
North Cumbria	16,378	50.7	457	1.4	7,355	22.8	3,297	10.2
Cumbria	26,915	51.5	884	1.7	12,349	23.7	5,492	10.5

Source: Cumbria Partnership NHS Foundation Trust

Health Projections

Figure 4: Health projections: number of residents with a health condition, Eden District, 2017 - 2030



Source: Projecting Older Peoples Population Information (POPPI) <http://www.poppi.org.uk/>; and Projecting Adult Needs and Service Information System (PANSI) <http://www.pansi.org.uk/> [N.B health projections are determined by projected population figures only]

Table 16: Health projections: number of residents with a health condition, Eden District, 2017 - 2030

	2017	2018	2020	2025	2030
Dementia (65+)	959	978	1,085	1,268	1,472
Limiting long-term illness (65+)	2616	2700	2,842	3,276	3,644
Mobility limited (65+)	2,512	2,596	2,700	3,121	3,602
Living in a care home (65+)	404	423	447	557	651
Providing unpaid care (65+)	1856	1888	1,961	2,118	2,287
Learning disability (18+)	1,006	1,008	1,011	1,016	1,020
Common mental disorder (18-64)	4,739	4,803	4,680	4,531	4,325
Predicted to have a fall (65+)	3,668	3,743	3,892	4,385	4,971
Predicted to be admitted to hospital as a result of falls (65+)	282	294	313	370	407

Source: Projecting Older Peoples Population Information (POPPI) <http://www.poppi.org.uk/>; and Projecting Adult Needs and Service Information System (PANSI) <http://www.pansi.org.uk/>

Falls

Table 17: Number and rate (per 1,000) of falls call-outs per year; average over period: April 2013 to March 2016

	<i>Number</i>		<i>Rate per 1,000</i>	
	<i>Eden ICC</i>	<i>Cumbria</i>	<i>Eden ICC</i>	<i>Cumbria</i>
Number of falls call outs (yearly average)	696	7,074	13.2	14.2

Source: Trauma and Injury Intelligence Group (TIIG)/North West Ambulance Service [based on the call out location, not the patient address]

Further information

Further information relating to each indicator for all ICCs, Cumbria and England (where available), including how calculations have been made can be found in the supporting ICC Workbook here: <https://www.cumbriaobservatory.org.uk/health-social-care/health-social-care-further-information/>

Joint Strategic Needs Assessment:

<http://www.cumbriaobservatory.org.uk/health/JSNA/2015/homepage.asp>

It is intended that these profiles will be updated on an annual basis; and will be further developed to include additional sources of data.