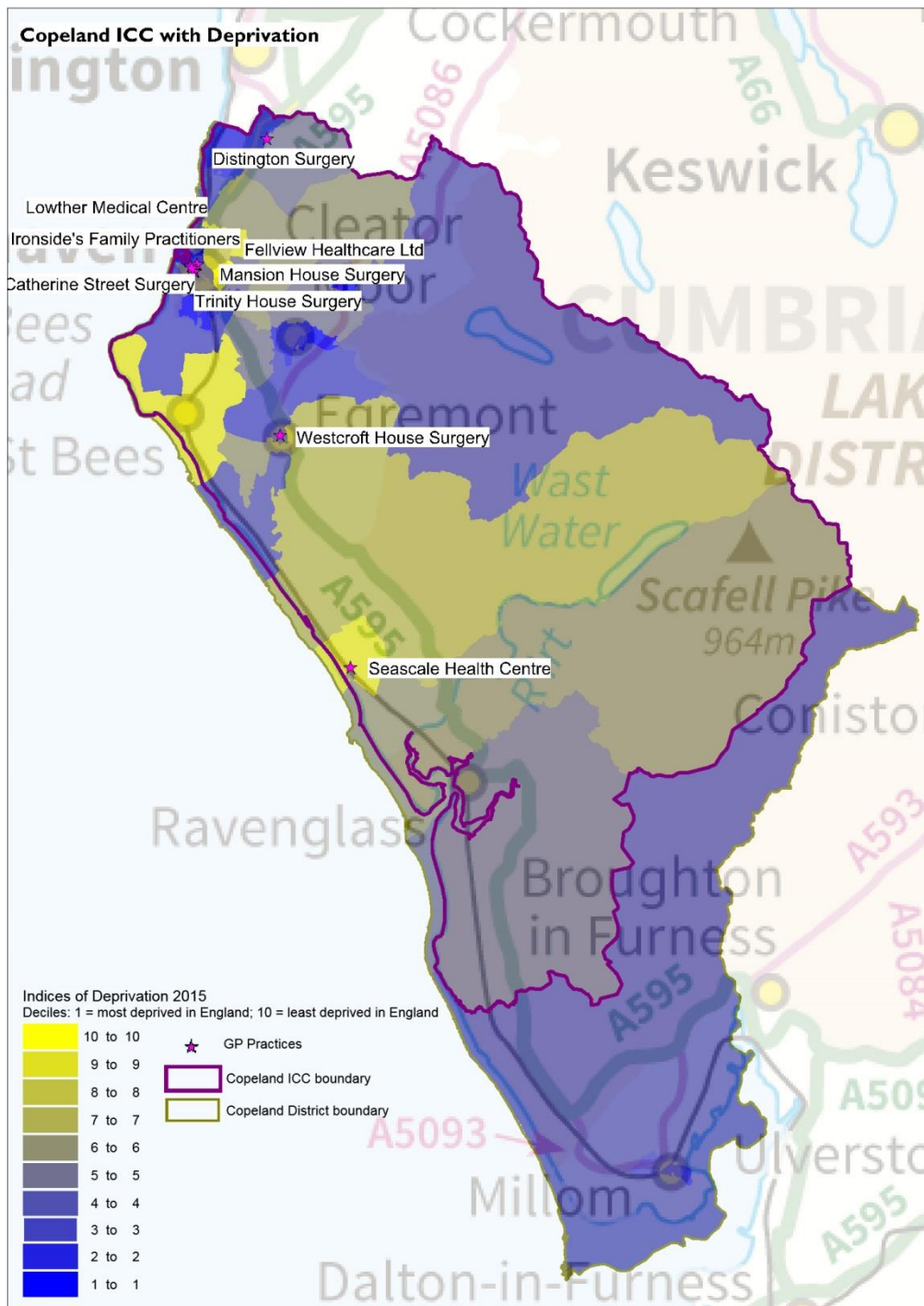


# Copeland ICC

Figure 1: Copeland ICC with Indices of Deprivation 2015



(c) Crown Copyright and Database Right, 2017 Ordnance Survey Licence Number 100019596

## Key issues

- Older population projected to increase in the district (Copeland)
- Life Expectancy and Healthy Life Expectancy (males and females) below national average in the district
- Unemployment worse than national average
- Hospital stays for alcohol related harm worse than national average
- Childhood obesity/excess weight worse than national average
- Deliveries to teenage mothers above national average
- Elective hospital admissions for hip replacement above national average

# Copeland ICC

- Incidence of all cancers (in particular breast and lung) above national average
- Early mortality (under 75 years) above national average
- A&E use above Cumbria CCG average
- Greater % of patients on GP Registers with: hypertension; diabetes; asthma; and dementia than the national average

**Key:** Text in *blue* refers to *registered population*; text in *black* refers to *resident population*. Where possible, comparisons with North Cumbria have been included; as well as benchmarking data against the England average.

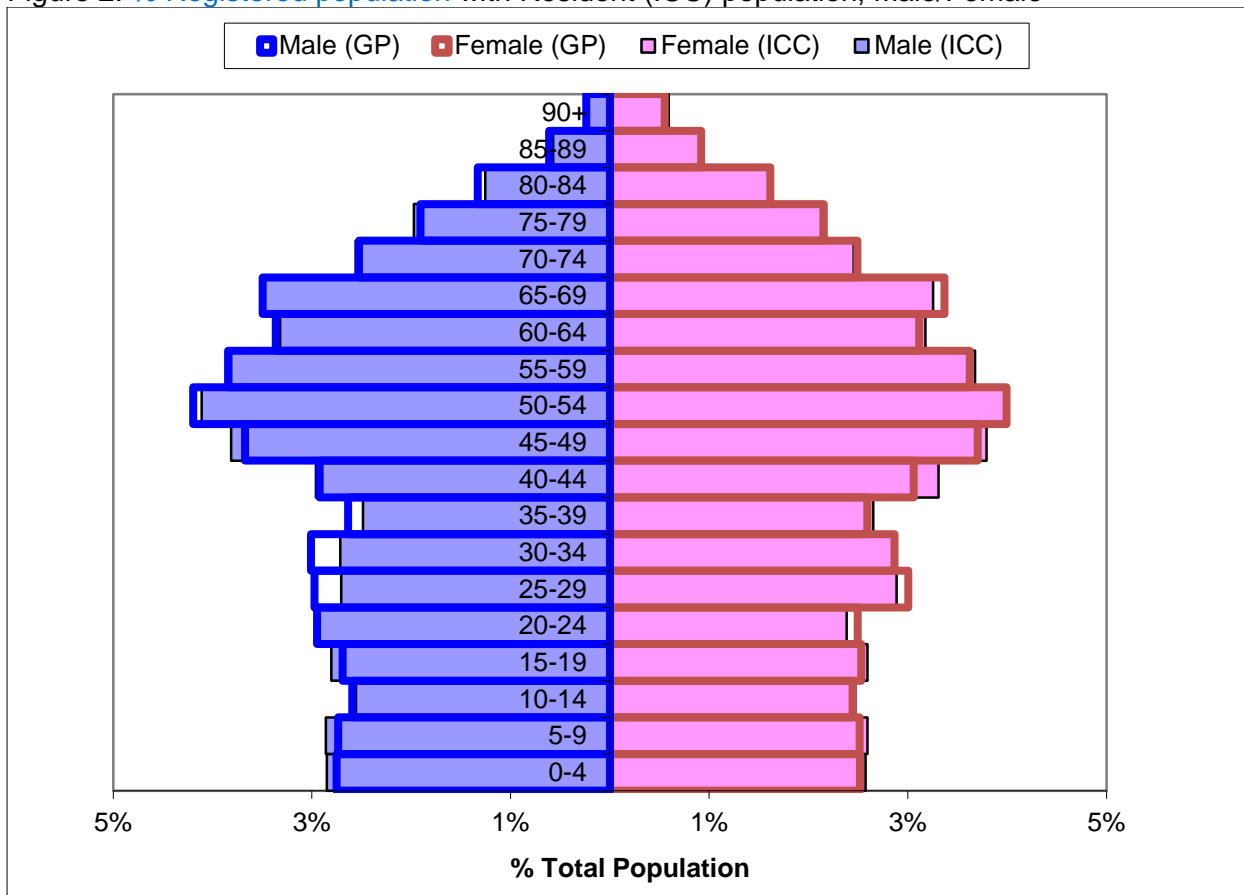
Table 1: Demographics, Copeland ICC

	<b>ICC</b>
<b>Registered Population (total combined GPs within ICC)</b>	61,748
Mid-Year Population, ONS 2015 (calculations based on % within ICC)	60,583
% 0-19 years	21.3%
% 15-64 years	63.0%
% 65+ years	21.1%
% 85+ years	2.3%
Black and Minority Ethnic (BME) Population (%)	1.6%
Population whose ethnicity is not 'White UK' (%)	2.7%
Proficiency in English (% of people who cannot speak English well or at all)	0.2%
Provision of 1 hour or more unpaid care per week (%)	11.3%
Provision of 50 hours or more unpaid care per week (%)	3.0%

Source: GP Population NHS Digital, July 2016

[https://data.gov.uk/dataset/numbers\\_of\\_patients\\_registered\\_at\\_a\\_gp\\_practice](https://data.gov.uk/dataset/numbers_of_patients_registered_at_a_gp_practice) ; Mid-Year Population Estimates, Office for National Statistics, 2015 <https://www.ons.gov.uk/> ; Census 2011 <https://www.ons.gov.uk/census/2011census>

Figure 2: % Registered population with Resident (ICC) population, Male/Female



# Copeland ICC

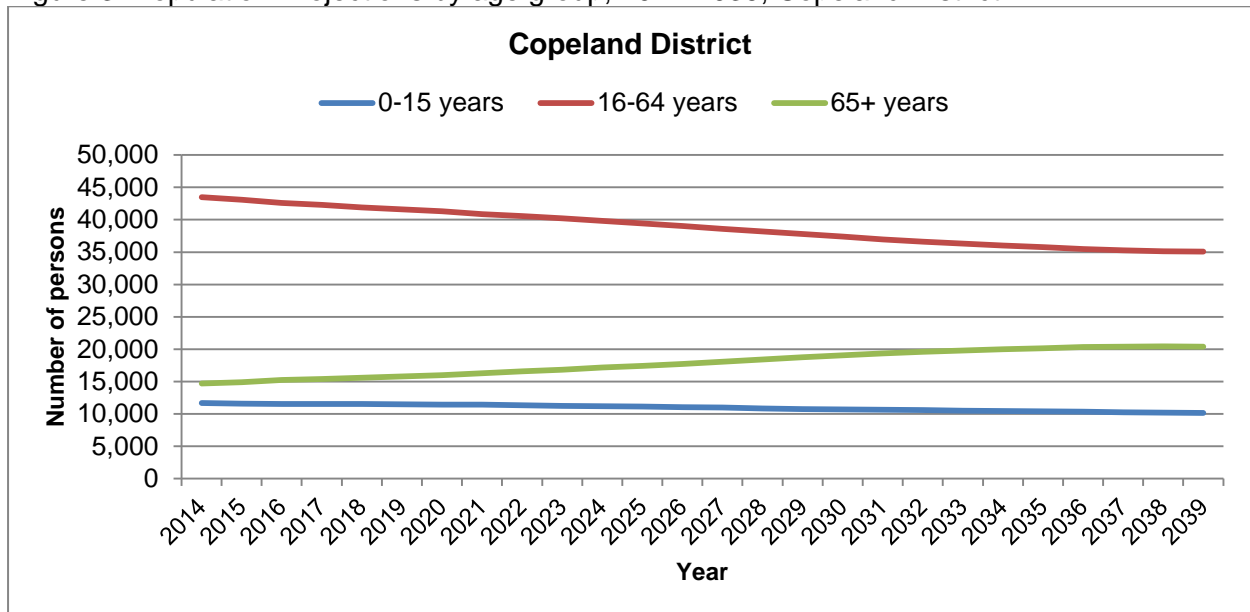
Source: GP Population NHS Digital, July 2016; Mid-Year Population Estimates, Office for National Statistics, 2015

Table 2: Population Projections by age group, 2014-2039, Copeland District

	Population			Numerical Change		Proportional Change	
	2014	2019	2039	2014-2019	2014-2039	2014-2019	2014-2039
All Ages	69,832	68,876	65,611	-956	-4,221	-1.4	-6
0-15 years	11,658	11,488	10,168	-170	-1,490	-1.5	-12.8
16-64 years	43,477	41,605	35,062	-1,872	-8,415	-4.3	-19.4
65+	14,697	15,782	20,380	1,085	5,683	7.4	38.7

Source: 2014-Based Sub-National Population Projections, Office for National Statistics  
<https://www.ons.gov.uk/peoplepopulationandcommunity/populationandmigration/populationprojections>

Figure 3: Population Projections by age group, 2014-2039, Copeland District



Source: 2014-Based Sub-National Population Projections, Office for National Statistics

Comparison with England:

● significantly worse ● significantly better ● not significantly different from average

Table 3: Socio-Economic

	Copeland ICC	North Cumbria	England
Unemployment (%) 2015-16	2.0	1.5%	1.8%
Long Term Unemployment (Rate/1,000, 16-64 years) 2015-16	6.1	3.9	4.3

Source: Local Health, Public Health England <http://www.localhealth.org.uk/>

Table 4: Lifestyle

	Copeland ICC	North Cumbria	England
Hospital stays for alcohol related harm (SAR) 2010/11-2014/15	130.6	127.2	100

## Copeland ICC

Obese adults (%) 2006-2008	25.5%	24.6%	24.1%
Binge drinking adults (%) 2006-2008	21.4%	22.1%	20.0%
Healthy eating adults (%)2006-2008	26.6%	28.1%	28.7%
Inactive < 30 mins moderate physical activity per week (%) (Adults Aged 16+, 2015-2016) (District)	24.7%	(Cumbria) 20.4%	22.0%
Fairly active 30-149 mins moderate physical activity per week (%) (Adults Aged 16+, 2015-2016) (District)	13.4%	(Cumbria) 12.3%	12.6%
Active = 150+ mins moderate physical activity per week (%) (Adults Aged 16+, 2015-2016) (District)	61.9%	(Cumbria) 67.3%	65.4%
Smoking prevalence in adults - current smokers (Adults Aged 18+, 2016) (District)	16.1%	(Cumbria) 15.5%	15.5%

Source: Local Health, Public Health England <http://www.localhealth.org.uk/> and Active Lives Survey <https://www.sportengland.org/research/active-lives-survey/> Public Health Outcomes Framework <http://fingertips.phe.org.uk/>

Table 5: Child health

	<b>Copeland ICC</b>	<b>North Cumbria</b>	<b>England</b>
Infant Mortality (rate per 1,000 live births) 2013-15 (District)	2.3		3.9
Low Birth Weight Births (%) 2010-14	7.4%	7.1%	7.4%
Child Development at age 5 (%) 2013-14	61.8%	58.2%	60.4%
GCSE Achievement (5A*-C inc. Eng & Maths) (%) 2013-14	56.0%	56.2%	56.6%
Obese Children (Reception Year) (%) 2012/13-2014/15	10.5%	9.9%	9.3%
Children with excess weight (Reception Year) (%) 2012/13-2014/15	25.5%	24.7%	22.2%
Obese Children (Year 6) (%) 2012/13-2014/15	21.8%	20.0%	19.0%
Children with excess weight (Year 6) (%) 2012/13-2014/15	37.1%	35.2%	33.4%
Deliveries to teenage mothers (%) 2010/11-2014/15	1.9%		1.2%

Source: Local Health, Public Health England <http://www.localhealth.org.uk/> . For trend data go here: <http://fingertips.phe.org.uk/>

Table 6: Emergency and Elective hospital admissions for hip fractures, Standardised Admission Ratios (SARs), 2010/11 to 2014/15

	<b>Copeland ICC</b>	<b>North Cumbria</b>	<b>England</b>
Emergency hospital admissions for hip fracture (65+yrs)	104.8	103.7	100
Elective hospital admissions for hip replacement	116	122.7	100

Source: Local Health, Public Health England <http://www.localhealth.org.uk/>

Table 7: Cancer incidence, Standardised Incidence Ratios (SIRs), 2010-2014

	<b>Copeland ICC</b>	<b>North Cumbria</b>	<b>England</b>
Incidence of all cancer	105.9	99.4	100
Incidence of breast cancer	115.2	101.5	100
Incidence of colorectal cancer	109.6	102.3	100
Incidence of lung cancer	113.7	97.2	100
Incidence of prostate cancer	95.8	106.3	100

Source: Local Health, Public Health England <http://www.localhealth.org.uk/>

## Copeland ICC

Table 8: Life Expectancy (Years); mortality and cause of death, Standardised Mortality Ratios (SMRs), 2010-2014

	<b>Copeland ICC</b>	<b>North Cumbria</b>	<b>England</b>
Life Expectancy at birth - MALE (2013-15) (District)	78.0	(Cumbria) 79.2	79.5
Life Expectancy at birth – FEMALE (2013-15) (District)	81.7	(Cumbria) 82.8	83.1
Healthy Life Expectancy at birth - MALE (2009-13) (District)	61.7	(Cumbria) 63.8	63.5
Healthy Life Expectancy at birth - MALE (2009-13) (District)	63.3	(Cumbria) 65.3	64.8
Deaths from all causes, under 75 years	117.0	104.4	100
Deaths from all cancer, under 75 years	117.8	103.7	100
Deaths from circulatory disease, under 75 years	121.9	103.3	100
Deaths from coronary heart disease, under 75 years	129.7	112.8	100
Deaths from stroke, all ages	115.2	110.9	100
Deaths from respiratory diseases, all ages	98.1	97	100

Source: Local Health, Public Health England <http://www.localhealth.org.uk/>

Table 9: Travel & Transport

	<b>Copeland ICC</b>	<b>England</b>
No cars or vans in household (%) (2011)	23.2%	25.8%
1+ car(s) or van(s) available in household (%) (2011)	76.8%	74.2%
Average travel times to key services - public transport/walking (mins) 2014 (District)	22.9	17.0
Average travel times to key services - car (mins) 2014 (District)	11.4	10.3

Source: Census 2011 <https://www.ons.gov.uk/census/2011census> ; Department for Transport, 2014. <https://www.gov.uk/government/collections/journey-time-statistics>

Table 10: Disease/condition prevalence. GP Practice Register(s) for diseases/conditions, 2015-16

	<b>Copeland ICC</b>		<b>CCG</b>		<b>England</b>	
	Number	%	Number	%	Number	%
Hypertension patients	10,292	16.68	83,081	15.92%	7,949,274	13.81%
Diabetes patients	4,339	8.53	31,467	7.27%	3,033,529	6.55%
Asthma patients	4,286	6.94	34,613	6.63%	3,400,679	5.91%
Dementia patients	630	1.02	5,118	0.98%	436,805	0.76%

Source: Quality Outcomes Framework, NHS Digital, 2015-16. <http://content.digital.nhs.uk/qof>

### Health services use

Table 11: Health Services Activity: utilisation numbers and rates (per 1,000 population); year-to-date 2016-17 (to September)

	<b>Number</b>		<b>Rate per 1,000</b>	
	<b>Copeland ICC</b>	<b>CCG</b>	<b>Copeland ICC</b>	<b>CCG</b>
Non Elective	3,070	25,155	43.67	43.86
Total Electives	3,996	34,174	56.84	59.59
Total Outpatient Firsts	6,146	48,664	87.43	84.85
Total Outpatient Subsequent	3,892	49,050	55.36	85.52
Accident & Emergency Consultant Led Only	11,296	69,651	160.69	121.44

Source: NHS North of England Commissioning Support Unit (NECS). Glossary available.

## Copeland ICC

### Adult Social care

Table 12: Number and rate (per 10,000, 18+ population) of services commissioned, by ICC and Cumbria County Council, during Oct' 2015 – Sep' 2016

	Copeland ICC		Cumbria	
	Number	Rate	Number	Rate
Residential Care	318	52.5	2,409	48.4
Nursing Care	49	8.1	891	17.9
Homecare	441	72.8	3,850	77.3
Day Services	208	34.3	1,380	27.7
Reablement	311	51.3	2,384	47.9
Assistive Technology (Telecare)	173	28.6	1,221	24.5
Carers Budget/ ISF payments/ Direct payments	224	37.0	2,472	49.6
Total service users	1,247	205.8	10,826	217.4

Source: Adult Social Care, Cumbria County Council

### Mental Health

Table 13: Numbers and rates (per 1,000) of A&E attendances for mental health conditions; NHS Cumbria CCG and GP Practice Based Localities, 2013-14 to 2015-16.

Locality	2013-14		2014-15		2015-16	
	Number	Rate	Number	Rate	Number	Rate
Copeland (Locality/District)	386	6.2	377	6.1	438	7.1
NHS Cumbria CCG	2,581	4.9	2,690	5.2	3,116	6.0

Source: North of England Commissioning Support (NECS) Information Service. Note: CCG total does not include those unassigned to a locality.

Table 14: Numbers & rates (per 1,000 GP population) of referrals to mental health services, 2015-16

	Total referrals		Admitted		Only Non-Admitted		No Care	
	Number	Rate	Number	Rate	Number	Rate	Number	Rate
ICC	3,231	52.3	85	1.4	1,497	24.2	581	9.4
North Cumbria	16,378	50.7	457	1.4	7,355	22.8	3,297	10.2
Cumbria	26,915	51.5	884	1.7	12,349	23.7	5,492	10.5

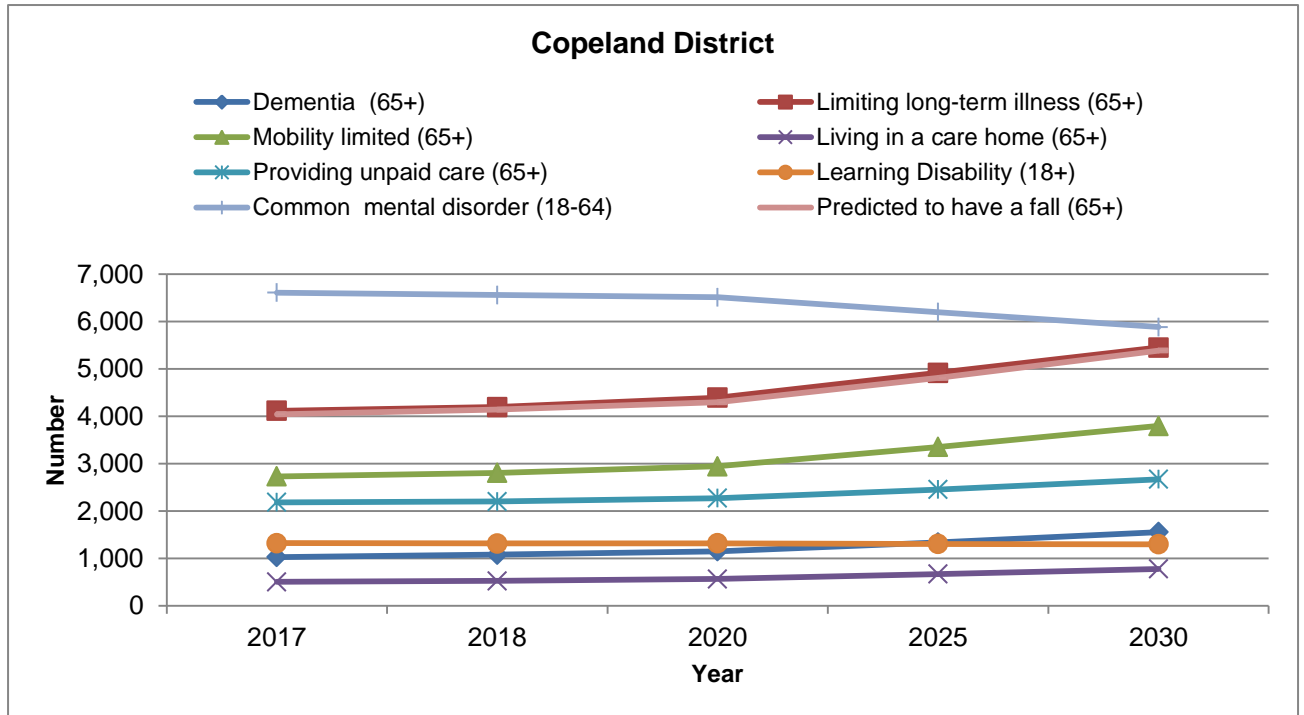
Source: Cumbria Partnership NHS Foundation Trust



# Copeland ICC

## Health Projections

Figure 4: Health projections: number of residents with a health condition, Copeland District, 2017 – 2030



Source: Projecting Older Peoples Population Information (POPPI) <http://www.poppi.org.uk/>; and Projecting Adult Needs and Service Information System (PANSI) <http://www.pansi.org.uk/> [N.B health projections are determined by projected population figures only]

Table 15: Health projections: number of residents with a health condition, Copeland District, 2017 - 2030

	2017	2018	2020	2025	2030
Dementia (65+)	1028	1081	1,151	1,336	1,557
Limiting long-term illness (65+)	4118	4194	4,395	4,917	5,452
Mobility limited (65+)	2,733	2,807	2,946	3,353	3,798
Living in a care home (65+)	506	524	565	670	779
Providing unpaid care (65+)	2184	2203	2,274	2,454	2,670
Learning disability (18+)	1,324	1,316	1,319	1,307	1,299
Common mental disorder (18-64)	6,612	6,560	6,515	6,200	5,885
Predicted to have a fall (65+)	4,042	4,142	4,297	4,810	5,388
Predicted to be admitted to hospital as a result of falls (65+)	318	326	346	397	436

Source: Projecting Older Peoples Population Information (POPPI) <http://www.poppi.org.uk/> ; and Projecting Adult Needs and Service Information System (PANSI) <http://www.pansi.org.uk/>

# Copeland ICC

## Falls

Table 16: Number and rate (per 1,000) of falls call-outs per year; average over period: April 2013 to March 2016

	<i>Number</i>		<i>Rate per 1,000</i>	
	<i>Copeland ICC</i>	<i>Cumbria</i>	<i>Copeland ICC</i>	<i>Cumbria</i>
Number of falls call outs (yearly average)	711	7,074	11.7	14.2

Source: Trauma and Injury Intelligence Group (TIIG)/North West Ambulance Service [based on the call out location, not the patient address]

### **Further information**

Further information relating to each indicator for all ICCs, Cumbria and England (where available), including how calculations have been made can be found in the supporting ICC Workbook here: <https://www.cumbriaobservatory.org.uk/health-social-care/health-social-care-further-information/>

Joint Strategic Needs Assessment:

<http://www.cumbriaobservatory.org.uk/health/JSNA/2015/homepage.asp>

It is intended that these profiles will be updated on an annual basis; and will be further developed to include additional sources of data.