

Topic Summary Briefing

Education at Census Day 2021

Cumbria and Districts

Aim: On the 10th of January 2023 the Office for National Statistics (ONS) released the 7th in a series of 'topic summaries' based on the results of the 2021 Census, which related to education at Census Day 2021. This briefing provides an analysis of the education topic summary for Cumbria and districts.

Important Notes: In this briefing any reference to 'national' figures refers to England & Wales. While district results are included in all figures, they are only noted within the narrative text if they are within the top or bottom five of all 331 Lower Tier Local Authorities (LTLAs) nationally. Any results relate to Census Day 2021. Data is measuring the qualifications of the entire adult population including those above retirement age and therefore may not be representative of the skill levels of the labour force; a further briefing relating to the labour market will be published when ONS release more detailed data, including age-specific variables. Finally, all Census results vary considerably across Cumbria's wards, Lower Super Output Areas (LSOAs) and Output Areas (OAs). While some OA level mapping is included in this briefing, a full range of sub-district level mapping and profiles will be provided via the Cumbria Observatory website (please see Further Information section).

Key Points

Schoolchildren and Full-Time Students:

- Of Cumbria's 477,400 usual residents aged 5+, 75,300 were identified as schoolchildren or students in full-time education (15.8%); this was lower than the national average (20.4%).

Qualifications

- Of Cumbria's 420,000 usual residents aged 16+, the greatest proportion indicated that their highest level of qualification was at Level 4 or above (30.1%); this was lower than the national average (33.8%).
- Compared to the national average Cumbria had higher proportions of residents with apprenticeships and level 3 qualifications.
- 18.4% of usual residents aged 16+ in Cumbria had no qualifications; this was similar to the national average (18.2%).
- Of all LTLAs nationally, Barrow-in-Furness and Copeland had the 1st and 3rd greatest proportions of residents aged 16+ with Apprenticeships.

Background

Every 10 years the Office for National Statistics (ONS) carries out a census to find out more about the population of England & Wales and the make-up of local communities. The most recent census took place on Sunday the 21st of March 2021. The results of the Census are used to plan for, and allocate resources to, services such as transport, healthcare and education. Census data on population also informs decisions about the allocation of local authority funding.

Census results require significant quality assurance work to ensure accuracy, including adjustment for people who have not completed the Census questionnaire. 2021 Census results are being released in three phases. The ONS began the second phase of 2021 Census results on Wednesday the 2nd of November 2022 by releasing the first of a series of datasets grouped by theme, known as topic summaries. The 7th topic summary relates to education. The following briefing provides an analysis for Cumbria and districts based on the on the 2021 Census Education Topic Summary.

Schoolchildren and Full-Time Students

Census 2021 asked whether residents aged 5 years and over were in full-time education on Census Day, 21 March 2021. This included schoolchildren and adults in full-time education. Schoolchildren and students in full-time education studying away from home were treated as usually resident at their term-time address.

Figure 1: Schoolchildren and Full-Time Students at Census Day 2021:

Schoolchildren and Full-Time Students: 2021 %

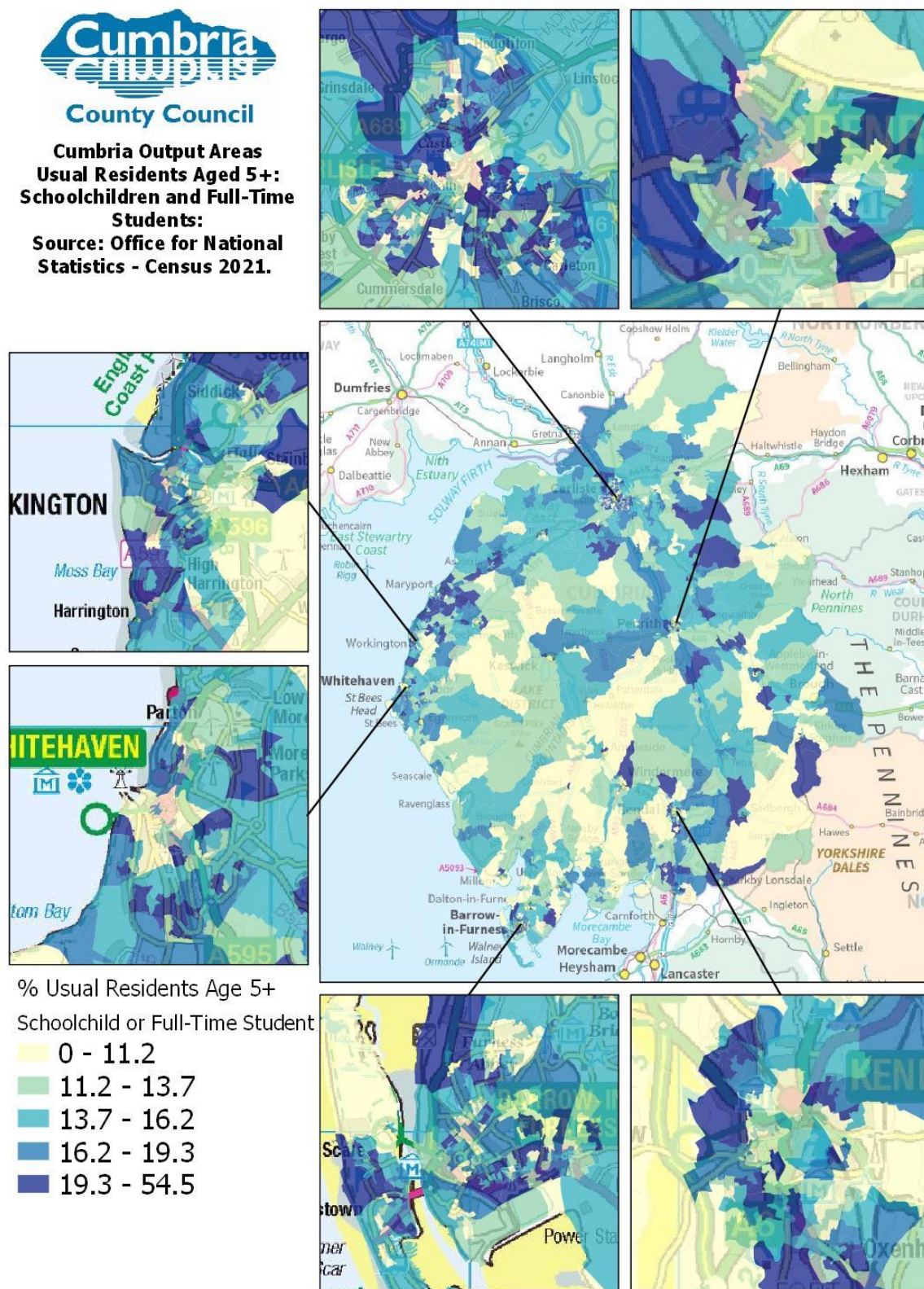
Area Code	Area Name	All Usual Residents Aged 5+ (Number)	Schoolchildren and Full-Time Students (Number)	Not a Schoolchild or Full-Time Student (Number)	Schoolchildren and Full-Time Students (% persons aged 5+)
E07000026	Allerdale	91.8K	14.4K	77.4K	15.7%
E07000027	Barrow-in-Furness	63.9K	10.3K	53.6K	16.1%
E07000028	Carlisle	104.6K	18.0K	86.6K	17.2%
E07000029	Copeland	63.9K	10.0K	53.9K	15.7%
E07000030	Eden	52.6K	7.7K	44.8K	14.7%
E07000031	South Lakeland	100.5K	14.8K	85.7K	14.7%
E10000006	Cumbria	477.4K	75.3K	402.1K	15.8%
K04000001	England and Wales	56365.5K	11508.1K	44857.4K	20.4%

Source: 2021 Census, Office for National Statistics, figures may not sum due to rounding.

Of Cumbria's 477,400 usual residents aged 5+, 75,300 were identified as schoolchildren or students in full-time education (15.8%); this was lower than the national average (20.4%).

As the 2011 Census asked people aged 4 years and over to answer the above question, while Census 2021 people asked people aged 5 years and over to answer the question, it is not possible to consider change between 2011 and 2021 in relation to schoolchildren and full-time students.

Figure 2: Schoolchildren and Full-Time Students at Census Day 2021: Output Areas:



Reproduced from the Ordnance Survey mapping with the permission of the Controller of Her Majesty's Stationery Office © Crown Copyright and Database Right 2023
Unauthorised reproduction infringes Crown Copyright and may lead to prosecution or Civil Proceedings. Ordnance Survey L A Licence 100019596 Cumbria County Council

Qualifications

Census 2021 asked residents aged 16 years and over to record any qualifications (including academic, vocational, and professional qualifications) they had achieved in England, Wales or worldwide. This was used to calculate the highest level of qualification using the following categories:

- No qualifications: no formal qualifications;
- Level 1: one to four GCSE passes (grade A* to C or grade 4 and above) and any other GCSEs at other grades, or equivalent qualifications;
- Level 2: five or more GCSE passes (grade A* to C or grade 4 and above) or equivalent qualifications;
- Apprenticeships;
- Level 3: two or more A Levels or equivalent qualifications;
- Level 4 or above: Higher National Certificate, Higher National Diploma, Bachelor's degree, or post-graduate qualifications; and
- Other qualifications, of unknown level.

Figure 3: Qualifications at Census Day 2021:

Qualifications: 2021 %

Area Code	Area Name	Usual Residents Aged 16+	No Qualifications	Level 1 and entry level qualifications	Level 2 qualifications	Apprenticeship	Level 3 qualifications	Level 4 qualifications or above	Other qualifications
E07000026	Allerdale	80.5K	20.6%	9.9%	13.9%	7.5%	17.2%	28.4%	2.5%
E07000027	Barrow-in-Furness	55.8K	18.5%	9.9%	13.2%	10.9%	20.5%	24.8%	2.3%
E07000028	Carlisle	91.3K	19.9%	10.6%	14.6%	7.1%	17.5%	27.9%	2.5%
E07000029	Copeland	56.0K	21.2%	10.1%	13.9%	8.1%	18.3%	26.0%	2.5%
E07000030	Eden	46.6K	17.3%	10.0%	14.3%	6.7%	16.8%	32.6%	2.3%
E07000031	South Lakeland	89.7K	13.8%	8.2%	12.9%	7.0%	17.1%	38.6%	2.3%
E10000006	Cumbria	420.0K	18.4%	9.7%	13.8%	7.7%	17.8%	30.1%	2.4%
K04000001	England and Wales	48566.4K	18.2%	9.6%	13.4%	5.3%	16.9%	33.8%	2.8%

Source: 2021 Census, Office for National Statistics, figures may not sum due to rounding.

Of Cumbria's 420,000 usual residents aged 16+, the greatest proportion indicated that their highest level of qualification was at Level 4 or above (30.1%); this was lower than the national average (33.8%). However, compared to the national average Cumbria had higher proportions of residents with apprenticeships and level 3 qualifications. 18.4% of usual residents aged 16+ in Cumbria had no qualifications; this was similar to the national average (18.2%). Of all LTLAs nationally, Barrow-in-Furness and Copeland had the 1st and 3rd greatest proportions of residents aged 16+ with Apprenticeships.

In Census 2021 the above question was revised and split up to group together different qualifications. This means that the way people answered the question in Census 2021 cannot be fully compared with the answers from the 2011 Census. For example, some people who hold an older or non-UK qualification when answering the question in Census 2021 may have chosen a higher qualification level than they did in the 2011 Census, although they hold the same qualifications. Therefore, it is not possible to consider change between 2011 and 2021 in relation qualifications.

Figure 4: No Qualifications at Census Day 2021: Output Areas:

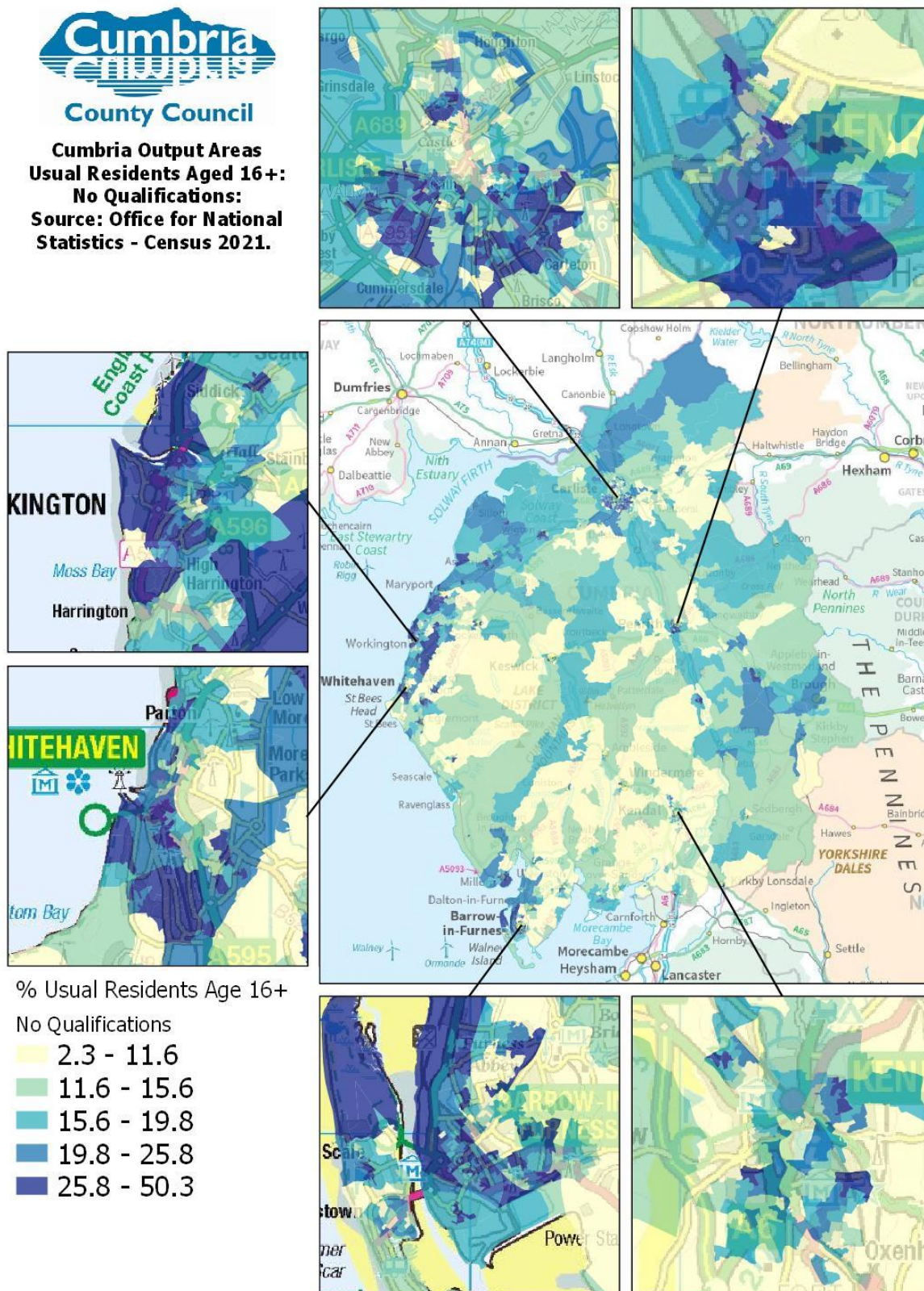
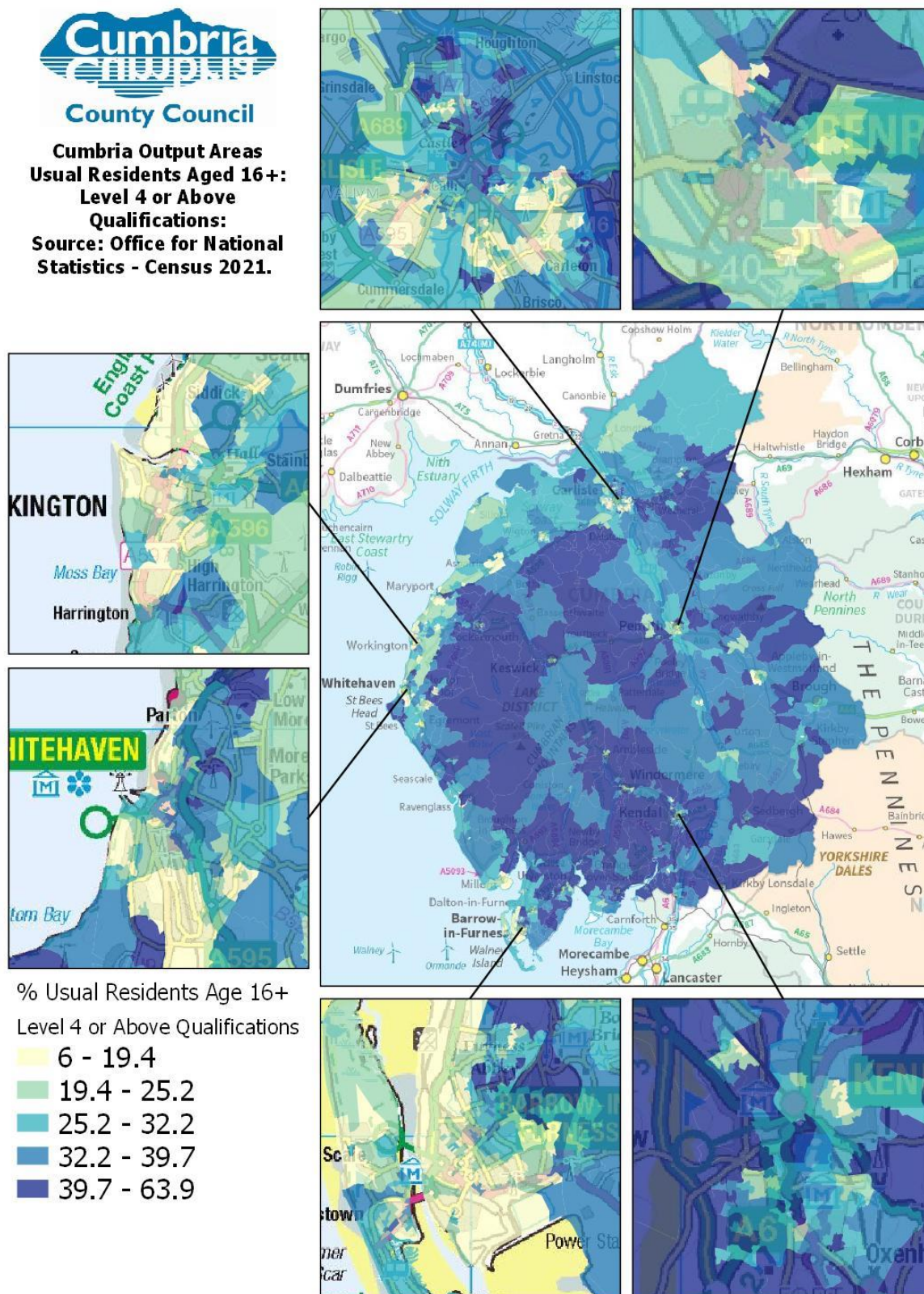


Figure 5: Level 4 or Above Qualifications at Census Day 2021: Output Areas



Implications

The figures outlined within this briefing represent just a small proportion of the data that was collected by the 2021 Census. Cumbria Intelligence Observatory will coordinate relevant analysis of 2021 Census statistics for Cumbria. This analysis will be used to:

- Build a more detailed picture of Cumbria and its communities.
- Compare results with the profile of people who use council services to assess whether they are providing fair access to public services, taking steps where a group is experiencing inequalities or potential discrimination.
- Enable informed strategic planning.
- Inform planning and delivery of services including schools, health provision, transport and housing.
- Inform a wide range of statutory needs assessments.
- Support lobbying activities.
- Support third sector organizations in funding applications and advocacy.

Further Information

The ONS plan to release all the main 2021 Census results within two years of Census Day. Please check the Cumbria Intelligence Observatory website over the coming months for further 2021 Census briefings and statistics as results are published: <http://www.cumbriaobservatory.org.uk/>

For more information: Email: info@cumbriaobservatory.org.uk