



# Bransty

## Electoral Division Profile 2015

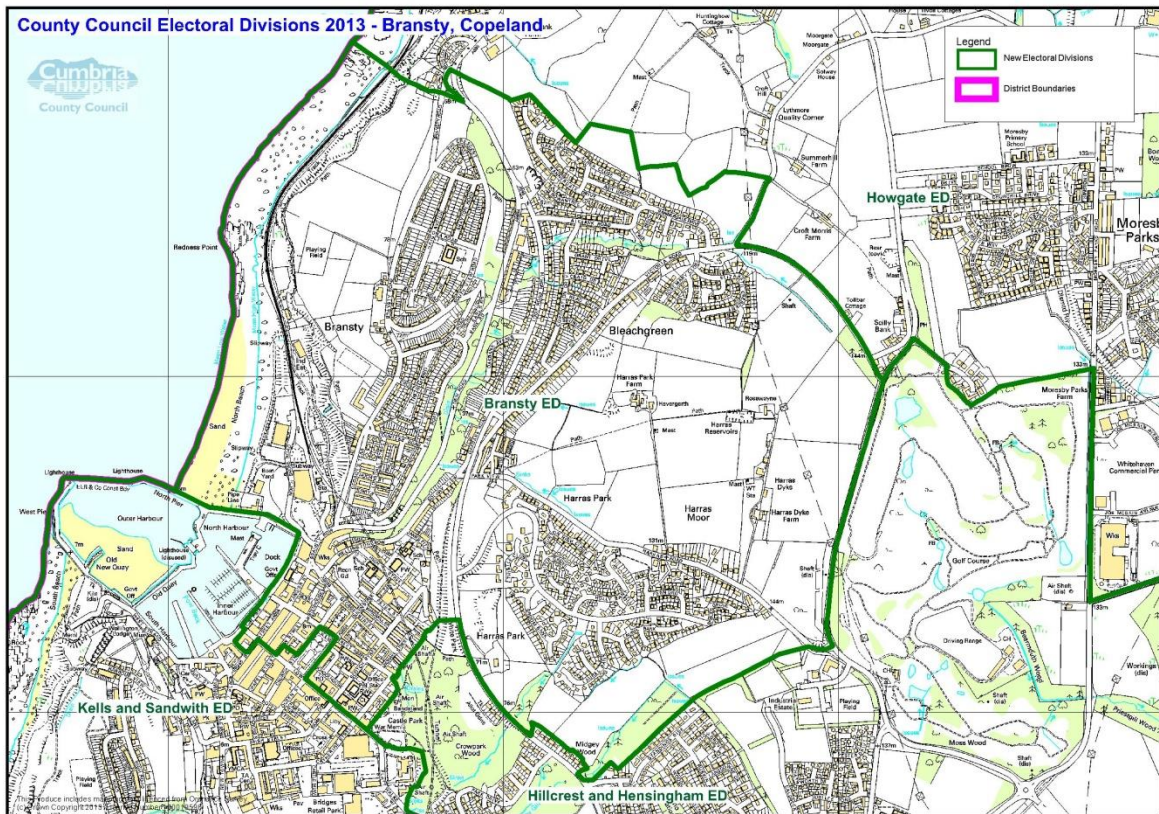
## Overview of Electoral Division

The Electoral Division of Bransty is within the District of Copeland. Bransty is also a suburb of the town of Whitehaven overlooking the coast with superb views over the Solway Coast. The Electoral Division of the same name incorporates Bransty, part of the town centre, the north shore coastline and Harras Moor estate.

The area is split by the A595 with social housing on one side and private homes on the other.

The area is unparished; it is not covered by a civil parish, or a town council.

## Map



PDF Map available from: <http://www.cumbria.gov.uk/Election2013/maps.asp>

## Communities

The Electoral Division covers a number of communities these are:

- Bransty
- Bleachgreen/Sunny Hill
- Rannerdale
- Bay Vista
- Harras Moor
- Harras Park
- The Highlands
- Part of Whitehaven Town Centre

## Statistical Profile

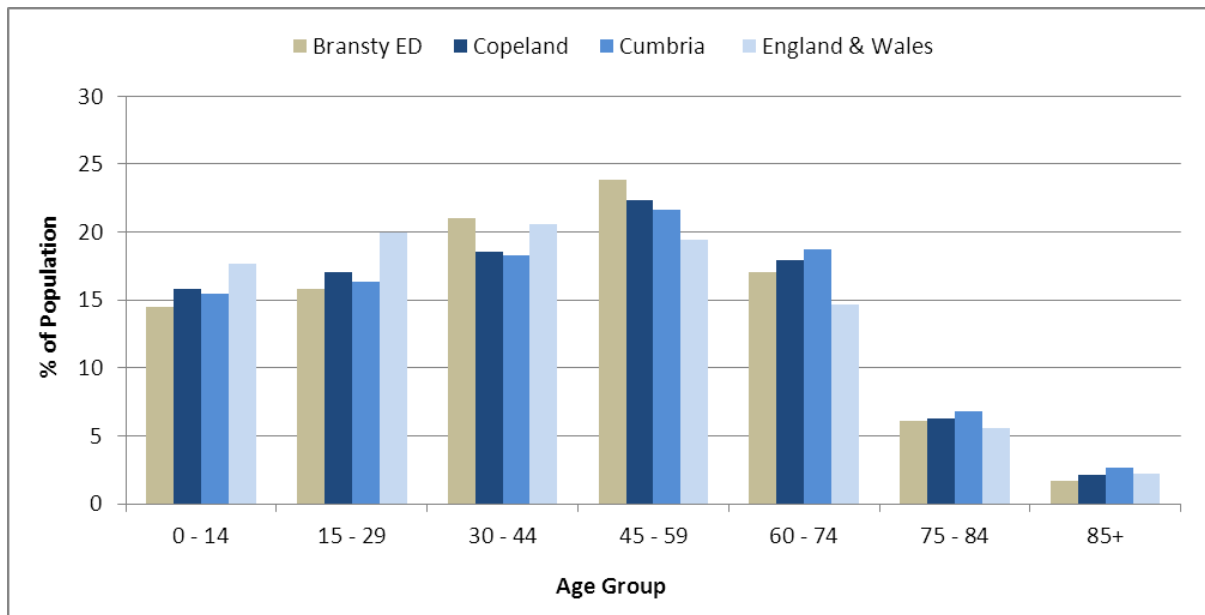
The 2011 Census estimated that the population of **Bransty Electoral Division (ED)** was **5417** persons.

The table below presents estimated numbers of residents in **Bransty ED** by age group:

	No. Persons by Age Group (Years)							
	All Ages	0 - 14	15 - 29	30 - 44	45 - 59	60 - 74	75 - 84	85+
<i>Bransty ED</i>	5417	783	854	1140	1294	924	329	93

*Source: Office for National Statistics, 2011 Census*

The chart below compares the proportion of **Bransty ED's** population within each age group with the proportion of the population within each age group across Copeland district, Cumbria and England & Wales:



Source: Office for National Statistics, 2011 Census

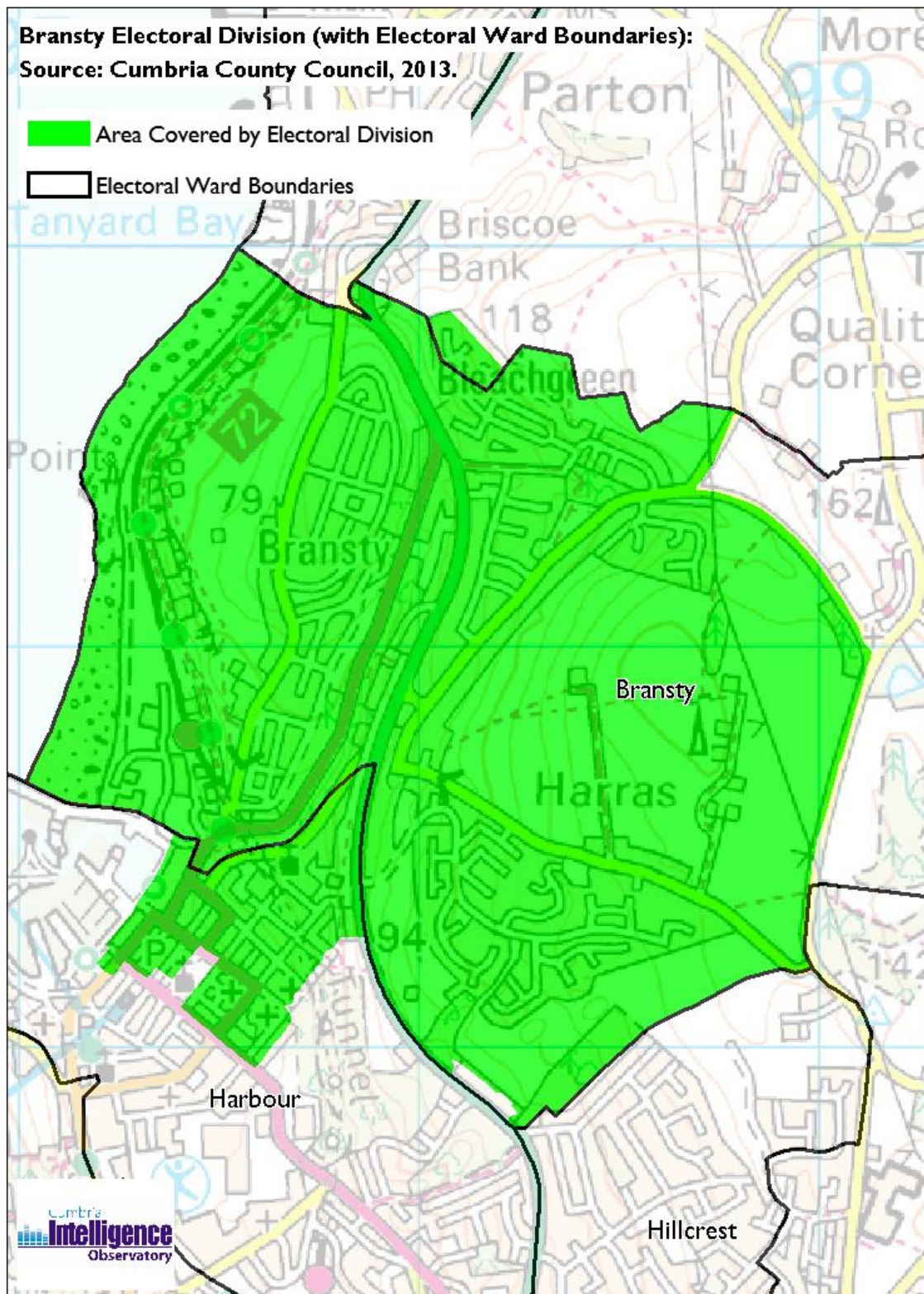
County Council Electoral Divisions cover large spatial areas and so division averages can mask variation between communities within the division. Furthermore, beyond Census data, there is little statistical information available for Electoral Divisions. However, most statistical agencies produce data for Electoral Wards. Therefore, there is a very wide range of statistical information available for Electoral Wards. Furthermore, as Electoral Wards are generally smaller than Electoral Divisions, statistics at this level provide more insight into variations between communities.

The table below identifies which Electoral Wards are fully or partially within the boundaries of **Bransty ED**, and what proportion of **Bransty ED**'s population live within each ward:

Electoral Division	Wards in Electoral Division	% of Electoral Division's Population that fall within the Ward
Bransty ED	Bransty	79.9
Bransty ED	Harbour	20.1

Source: Cumbria Intelligence Observatory, 2013

The map below overlays Electoral Ward boundaries on to **Bransty ED's** boundary:



(c) Crown Copyright and Database Right, 2013 Ordnance Survey Licence Number 100019596

The Cumbria Intelligence Observatory presents many Electoral Ward level statistics via the interactive 'Cumbria Atlas' tool. The Statistics provided within the Cumbria Atlas cover topics such as, but not limited to, population, housing, health, economy, poverty, ethnicity, language, and transport. The datasets within the Cumbria Atlas are regularly updated and expanded.

For simple step by step instructions to use the Cumbria Atlas to explore statistics for the wards within your Electoral Division, please visit the following web page:

<http://www.cumbria.gov.uk/eLibrary/view.asp?ID=56017>

The Information and Intelligence Team within Cumbria County Council are happy to talk you through using the Cumbria Atlas over the phone, or face to face. Training sessions can also be arranged for small groups.

To contact the team please call 01228 226309, or email [info@cumbriaobservatory.org.uk](mailto:info@cumbriaobservatory.org.uk)

## Parks, Open Spaces and Leisure Facilities

- Bransty Rangers Football Field
- The Green, Bransty
- Bleachgreen
- Harras Park and Harras Moor
- The Highlands
- North Beach
- Midgey Wood
- Play parks at Bransty & near St James' Infant School on High Street

## Active Community Organisations

### Bransty

- Bransty Royal British Legion
- Bees of Bransty Community PTA
- Bransty Rangers Football club
- Bransty Parent & Toddler Group

### St James'

- St James' Parish Church
- St James' Community Centre – Regular users include:
  - St James' Pre School
  - Mothers' Union
  - Zumba Class
  - Sewing Class
  - Cowper School of Dance Class

- Little Pilgrims (Carer & Toddler Group)
- St James' Indoor Bowling Club
- Junior Church
- Youth @ St James
- Cumbria Wado-Kai Karate School
- West Cumbria Taek Won-Do
- St James' Infants School PTA
- St James' Junior School PTA

Midgey Ghyll Allotment Association

Churches in Town Centre

- Christian Brethren Church
- Grace Church
- Religious Society of Friends
- Salvation Army Whitehaven Corps

## Key Communication Networks

Whitehaven News

A weekly newspaper for the local area of Whitehaven produced by CN Group, distributed on a Thursday <http://www.whitehavennews.co.uk>

News and Star

A daily evening newspaper for the local area of West Cumbria produced by CN Group <http://www.newsandstar.co.uk>

Whitehaven Guide

Produced quarterly by the Guide Media Group

Each of the local primary schools provides regular newsletters for parents and carers.

BBC Radio Cumbria County Council

Local radio station produced by the BBC for Cumbria County Council  
CFM Radio

Local radio station produced by the Bauer Media Group, covering Cumbria and Southwest Scotland

## Community Assets

- Bransty Primary School
- Ivy Club – headquarters of Bransty Royal British Legion
- St James' Infants School
- St James' Juniors School
- St James' Parish Church

- St James' Community Centre

## Local Cumbria County Council Service Hubs

Electoral Division	Bransty ED
LA Care Homes	1
Non LA Care Homes	2
Extra Care Housing	0
Primary Schools	3
Secondary Schools	0
Adult Education Centres	0
Childrens Centres	0
Family Centres	0
Cumbria Outdoors	0
Hospitals	0
Doctors Surgeries	1
Libraries	0
Book Drops	0
Archives Centres	1
Registration Offices	0
Local Links	0
Community Development Centres	0
Credit Unions	0
CCC Grant Funded or Directly Operated Swimming Pools	0
Highways Depots	0
Fleet Workshops	0
Waste Treatment Plants	0
Household Waste Recycling Centres	0
Fire Stations	0
<b>TOTAL</b>	<b>8</b>

## Community Engagement

Neighbourhood Forums are held on an ad hoc basis. The Whitehaven Neighbourhood Forum covers the electoral division of Bransty. For more information please contact the Copeland Area Support Team 01946 505020



## Key Community Contacts

### **Eileen Weir, Councillor for Bransty, Cumbria County Council**

- Address: 112A Queen Street, Whitehaven, Cumbria, CA28 7QD
- Phone: 01946 692669
- Email: [Eileen.Weir@cumbria.gov.uk](mailto:Eileen.Weir@cumbria.gov.uk)

### **Cumbria County Council, Copeland Area Support Team**

- Address: Cleator Moor Council Centre, The Square, Cleator Moor, CA25 5AP
- Phone: 01946 505020
- Email: [gillian.elliott@cumbria.gov.uk](mailto:gillian.elliott@cumbria.gov.uk)
- Web: [www.cumbria.gov.uk](http://www.cumbria.gov.uk)

### **Copeland Borough Council**

- Address: Copeland Centre, Catherine St, Whitehaven, CA28 7SJ
- Phone: 0845 054 8600
- Email: [info@copeland.gov.uk](mailto:info@copeland.gov.uk)
- Web: [www.copeland.gov.uk](http://www.copeland.gov.uk)

### **Copeland Homes**

- Address: Copeland Centre, Catherine St., Whitehaven, CA28 7SJ
- Phone: 0845 155 0980 / Direct Dial: 01946 517650
- Email: [contactus@homegroup.org.uk](mailto:contactus@homegroup.org.uk)
- Web: [www.homegroup.org.uk](http://www.homegroup.org.uk)

### **Copeland (Whitehaven) Citizens Advice Bureau**

- Address: Tangier Buildings, Gregg's Lane, Whitehaven, CA28 7UH
- Phone: 01946 693321
- Web: [www.citizensadvice.org.uk](http://www.citizensadvice.org.uk)