



Cumbria SEND Information, Advice & Support Service

Offering impartial information, advice and support to children and young people with special educational needs and or disabilities and their parents & carers.





**Cumbria SEND
Information, Advice & Support Service
(formerly Cumbria Parent Partnership Service)**

Education, Health & Care Plans Support for Students

**Presentation by Tracey O’Roarty – SEND
Information, Advice and Support Co-ordinator
Carlisle and Eden**





Cumbria SEND
Information, Advice & Support Service
(formerly Cumbria Parent Partnership Service)

What are Education, Health & Care Plans?

- EHC Plans focus on what a child/young person wants to achieve and what support is needed to do this. (A child becomes a young person at age 16)
- Having an EHC plan means the different agencies that provide your education, health and social care support should work more closely together to help you achieve your goals and make sure you are supported in the best way possible.



Cumbria SEND
Information, Advice & Support Service
(formerly Cumbria Parent Partnership Service)

Who has an EHC Plan?

- EHC plans are for children and young people who have a special educational need or disability that cannot be met by support that is usually available in a school or college. EHC plans can continue until you are 25.





Cumbria SEND
Information, Advice & Support Service
(formerly Cumbria Parent Partnership Service)

What is included in an EHC Plan?

- An EHC plan is tailored to meet your particular needs so each child or young person's plan looks different. Your EHC plan includes information about you, how you like to communicate, what support you need and what you would like to achieve.
- All the people who support you can see the information in your plan. You can share your views about what personal information is included in your plan and who should see this information.



Cumbria SEND
Information, Advice & Support Service
(formerly Cumbria Parent Partnership Service)

Rights and aspirations for young people

- Young people have a greater say in the support they receive as part of their EHC plan, to help them achieve their aspirations such as going to university or work.
- Young people should be able to make their views and opinions heard, and those who support young people, such as teachers and local authority staff, have to take into consideration what young people have to say and give more weight to their views, opinions and goals.

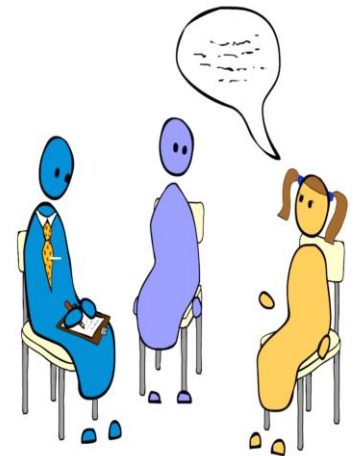




Cumbria SEND
Information, Advice & Support Service
(formerly Cumbria Parent Partnership Service)

Review meetings

- A young person's EHC Plan should be reviewed once a year at Review Meeting.
- Young people should have the opportunity at the Review Meeting to present their views and wishes in a way they feel comfortable with.





Cumbria SEND
Information, Advice & Support Service
(formerly Cumbria Parent Partnership Service)

How do I get an EHC Plan?

If you don't have an EHC Plan but think you need one:

- Ask college what SEND support they are already providing. This will usually be written down in a personalised support plan.
- You can ask the Local Authority for an EHC Needs Assessment. Cumbria SEND IAS Service can help you with this – contact Tracey O’Roarty.



Cumbria SEND
Information, Advice & Support Service
(formerly Cumbria Parent Partnership Service)

More Information on EHC Plans

https://councilfordisabledchildren.org.uk/sites/default/files/field/attachemnt/Fact%20Sheet_Making%20Decisions.pdf

<https://www.youtube.com/user/WatchCDC>

<http://localoffer.cumbria.gov.uk/kb5/cumbria/fsd/home.page>

https://councilfordisabledchildren.org.uk/sites/default/files/field/attachemnt/Fact%20Sheet_EHC%20Plans.pdf

<http://cyp.iassnetwork.org.uk>



Cumbria SEND Information, Advice & Support Service

If you would like any help with an EHC Plan or planning for your future please contact me:

Telephone: 07825 088031

Email: tracey.oroarty@cumbria.gov.uk

www.cumbria.gov.uk/childrensservices/schoolsandlearning/ils/parentpartnership/default.asp

Facebook: <http://fb.me/CumbriaSEND>

Offering impartial information, advice and support to children and young people with special educational needs and or disabilities and their parents & carers.