

ARCHIVE DOCUMENT – CONNECTING CUMBRIA PHASE 1 AND PHASE 2 DELIVERY CONTRACT WITH BT OPENREACH

What is Connecting Cumbria?

Connecting Cumbria came into being in 2012 when Cumbria became the pilot for the Broadband Delivery UK Superfast Programme working in partnership with BT and subsequently Openreach on Phase 1 and Phase 2 of the Connecting Cumbria programme on the delivery of fibre broadband services across Cumbria. Connecting Cumbria has since evolved and is now the key driver for the Digital Infrastructure Strategy for the county as it continues to drive all aspects of Digital Connectivity to ensure maximum coverage across Cumbria.

This document holds archived information relating to Connecting Cumbria Phase 1 and Phase 2 programme information.

Interactive Mapping

About Mapping

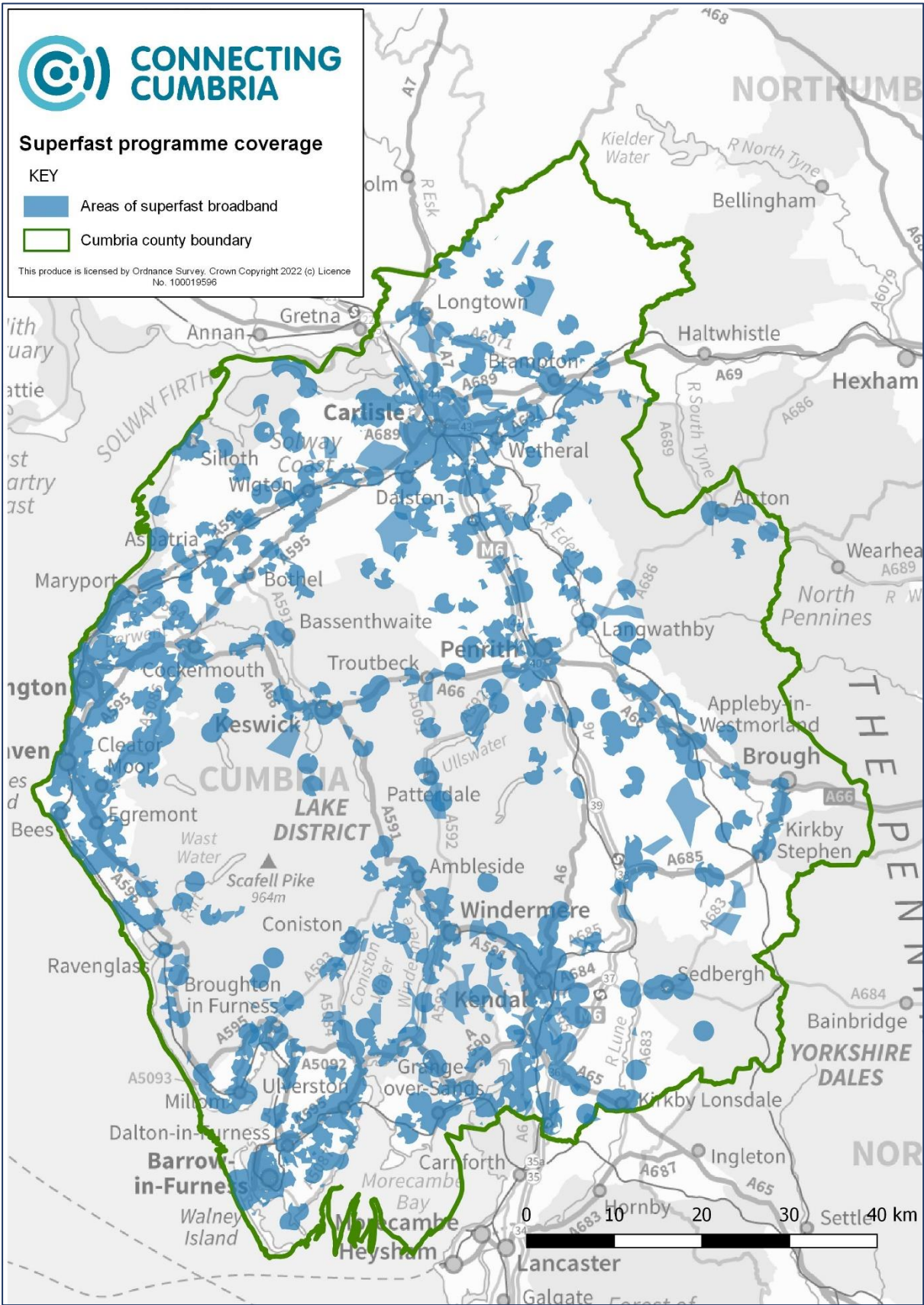
Please note mapping may not display correctly unless cookies have been accepted on this website.

To find out more about how we use cookies please [visit our cookie information page](#)^[2]

1. The potential connection speed achievable at an individual property depends on a range of factors including the configuration of a property's physical connection to the telephone network, choice of equipment within the property and the service package selected from your internet service provider. It is strongly recommended that residents check with their chosen service provider or follow the provided link to the BTOpenreach Line checker to confirm the potential speeds available to their property.
2. Superfast is defined as a download speed of greater than 24Mbps. Whilst a small number of connections (less than 10%) might be slightly below that, the vast majority are significantly above. In our deployment to date 80% are greater than 30Mbps and 65% are greater than 50Mbps.
3. This map is provided for illustrative purposes only and Cumbria County Council accepts no responsibility for this map being used as the basis of any commercial or personal investment.
4. This map outlines the expected works of the Connecting Cumbria Programme only and does not show services that may be available to areas commercially or via any other means.
5. This map is based on the best information currently available to Cumbria County Council and may change as information is refined or changed within the build programme. In particular any planned work or work in progress are subject to change without notice.

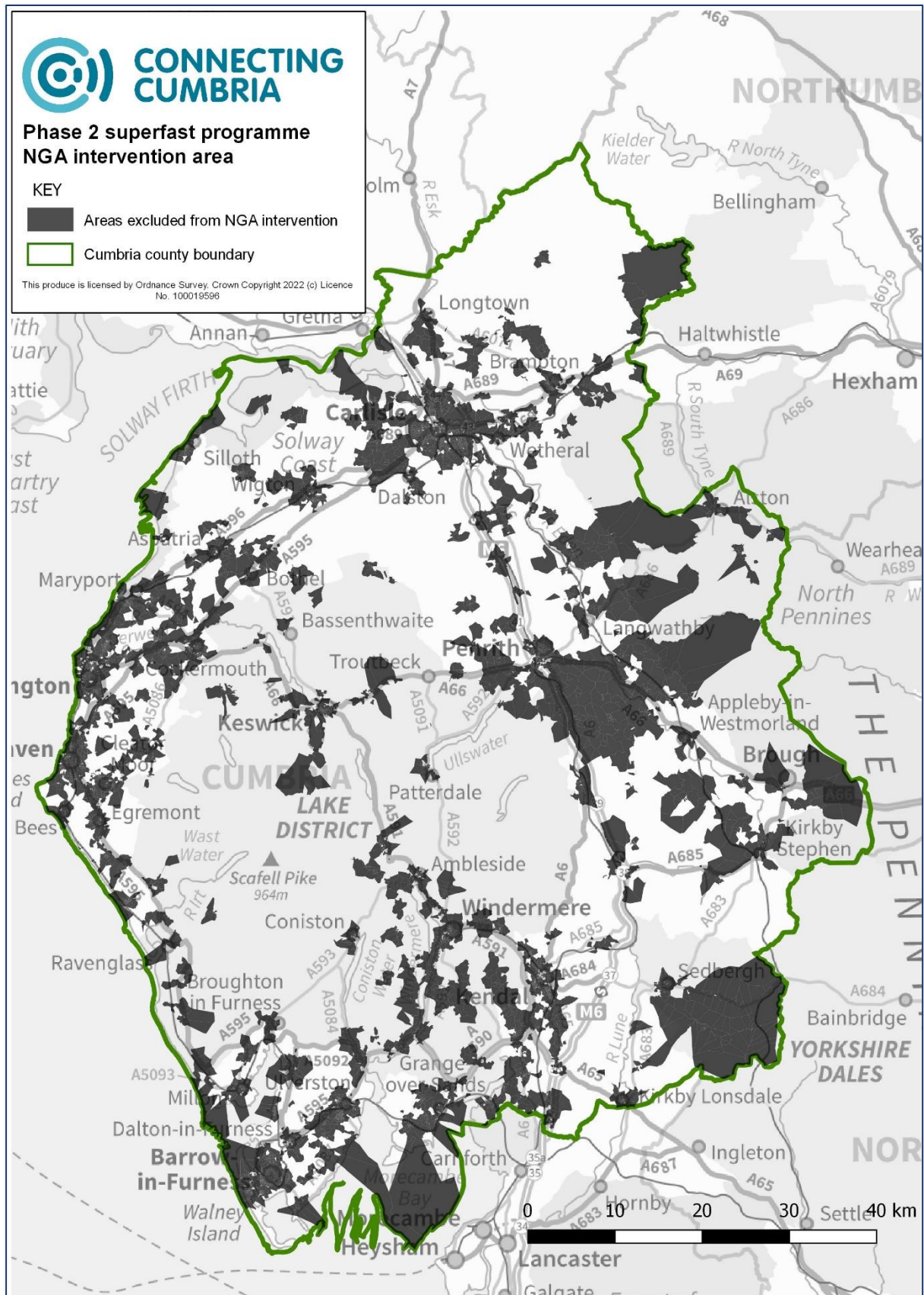
Deployment Map

Map showing indicative deployment of fibre broadband.



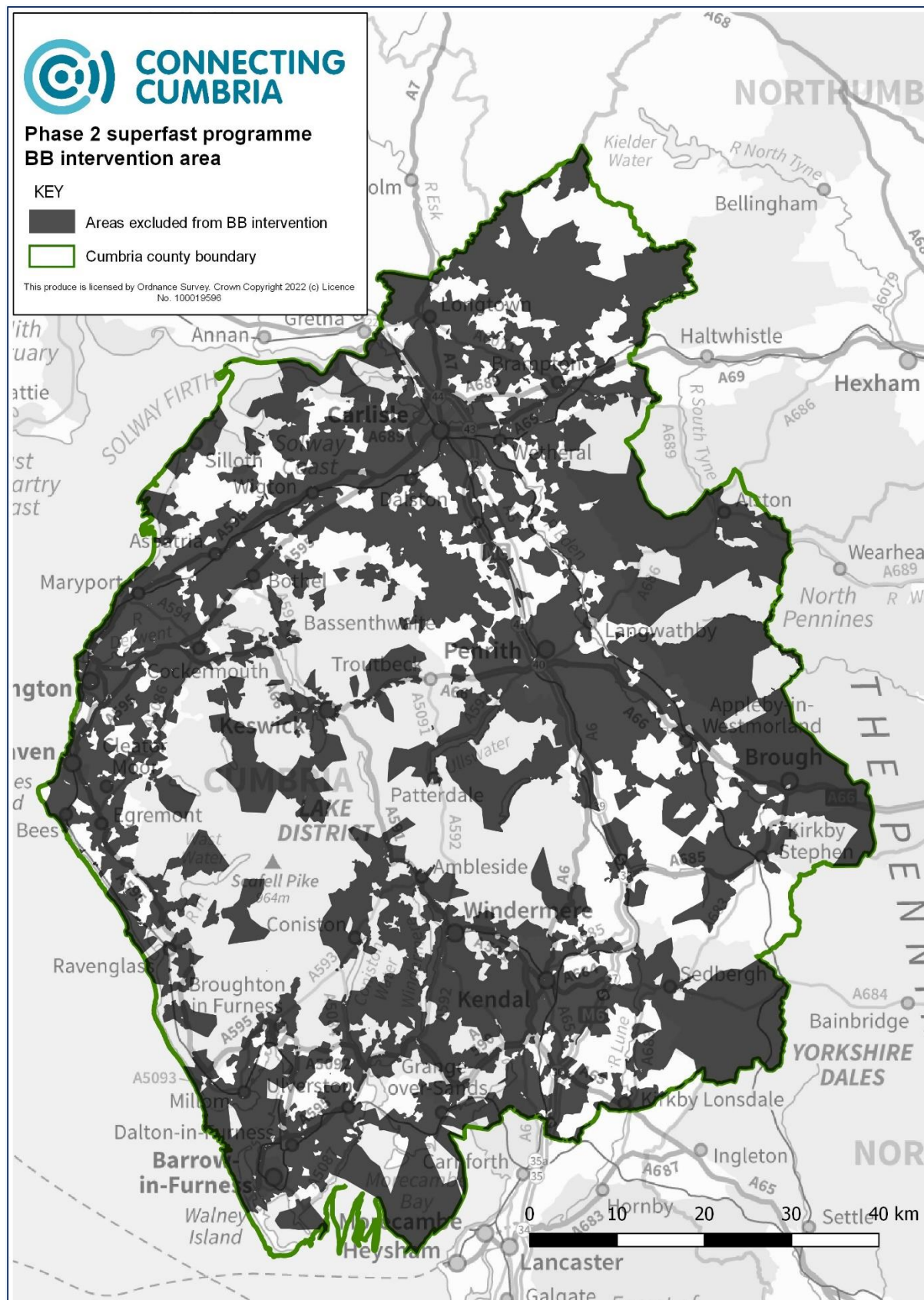
Intervention Area NGA

Map showing areas excluded from Connecting Cumbria Phase 2 deployment of Next Generation Access (NGA) fibre broadband.



Intervention Area – BB

Map showing areas excluded from Connecting Cumbria Phase 2 deployment of basic fibre broadband.



Connecting Cumbria Phase 1

Connecting Cumbria is a partnership between Cumbria County Council and BT that will boost the local economy by supporting the creation and protection of jobs over the next few years. The county's enterprise zones are a key priority as superfast broadband will help local businesses to become more competitive but will also help spread these services much further for residential use. The project is being funded by the Broadband Delivery UK (BDUK), Cumbria County Council and BT.

Phase 1 of the programme is scheduled to run until the summer of 2016.

About Phase 1

Connecting Cumbria is a partnership between Cumbria County Council and BT that will boost the local economy by supporting the creation and protection of jobs over the next few years. The county's enterprise zones are a key priority as superfast broadband will help local businesses to become more competitive but will also help spread these services much further for residential use. The project is being funded by the Broadband Delivery UK (BDUK), Cumbria County Council and BT.

Phase 1 of the programme is scheduled to run until the summer of 2016.

Phase 1 Archived Documents

[Intervention Area Map - August 2012^{\[2\]}](#)

[Intervention Area Basic Broadband - December 2014^{\[2\]}](#)

[Intervention Area NGA - December 2014^{\[2\]}](#)

CONNECTING CUMBRIA PHASE 2

About Phase 2

Phase 2 of Connecting Cumbria is aiming to extend the availability of superfast broadband to 95% of premises across the county by mid 2018. A contract is now in place with BT to deliver this together with commercial deployments in the county.

The deployment strategy of Connecting Cumbria is to provide a superfast broadband infrastructure to as many premises within the available funds. This means that we select areas for Phase 2 deployment to maximise the premises passed. All else being equal we do have a preference for areas with more businesses, or areas that have lower percentage coverage from the Phase 1 deployment, but the overarching priority remains to cover as many premises as possible.

Between 28th November 2014 - 9th January 2015 a public consultation sought opinions on the potential Intervention Areas for superfast and basic broadband in Phase 2. The consultation enabled the public and service providers to comment on the target areas and register opinions.

Please find below a summary of responses and some further information on how the intervention area is assessed and identified.

[Public Consultation Responses Summary](#)
[State Aid Public Consultation Document](#)
[Supplementary Notes](#)

Further work has been carried out with service providers since the public consultation closed in order to finalise the intervention area. The result of this is shown in the maps below.

The grey area on the map is where there is commercial live and planned coverage or Connecting Cumbria Phase 1 live and planned coverage. The white area is the Phase 2 Intervention Area where we are able to invest state aid. Please note that this doesn't mean that we will provide superfast broadband in all of the white area, but rather this is the area that we will look at in our planning and survey work.

[Phase 2 Intervention Area basic broadband - final](#)
[Phase 2 Intervention Area Next Generation Access superfast broadband - final](#)

[Welton - Next Generation Access \(NGA\) Broadband](#)

THE UK GIGABIT PROGRAMME

[About the UK Gigabit Programme](#)

BDUK Launches Public Review in Cumbria

Building Digital UK has today - Tuesday 9th February 2021 - launched a Public Review in Cumbria.

Following an Open Market Review which took place in late 2020, BDUK is seeking views from the public and other stakeholders with regard to existing or planned commercial gigabit capable broadband in the area of Cumbria.

This consultation opens on 9th February 2021 and closes on 9th March 2021.

This is part of the wider UK Gigabit Programme announced by the government with the ambition of delivering nationwide gigabit connectivity as soon as possible. Our target is a minimum of 85% gigabit-capable coverage by 2025, with an ambition to get as close to 100% as possible.

For further information and details on how to respond, please visit:

www.gov.uk/government/consultations/uk-gigabit-programme-cumbria-public-review

Reclassification of postcodes for Investment

[Reclassification of Postcodes](#)

In 2015 Cumbria County Council's public consultation, which sought to identify areas which do not have Next Generation (NGA) broadband infrastructure or where there are no plans to provide such infrastructure over the next three years, closed and state aid Intervention Area was set for the Connecting Cumbria programme. Further to this evidence has emerged that NGA services are not available in a number of postcodes where coverage had been claimed during the public consultation.

Following conclusion of our consultation, conducted between 16th January and 13th February 2017, we can confirm that suitable evidence has been put forward to confirm NGA service availability in the 146 postcodes considered for reclassification as NGA white. On the basis of this Cumbria County Council and Broadband Delivery UK have concluded that NGA services are not available in these postcodes and they should now be reclassified as NGA White thus becoming eligible for publicly funded intervention under the Connecting Cumbria programme.

Please note that funding and technology under the Connecting Cumbria programme remains limited therefore a postcode becoming NGA White does not guarantee that NGA broadband deployment activity will be undertaken. The Connecting Cumbria programme will continue to work as efficiently as possible to reach as many properties as we can across Cumbria with available funding.

The 146 postcodes now reclassified as NGA white are:

POSTCODES						
CA1 2FD	CA5 7HL	CA7 2QA	CA7 8AB	CA7 8BX	CA7 8NE	CA8 9DX
CA15 6RB	CA5 7HN	CA7 2QB	CA7 8AD	CA7 8BY	CA7 8NG	CA8 9EA
CA5 6AA	CA5 7HQ	CA7 5AA	CA7 8AE	CA7 8BZ	CA7 8NH	CA8 9EB
CA5 6AB	CA6 4BY	CA7 5AB	CA7 8AF	CA7 8DA	CA7 8NJ	CA8 9EE
CA5 6AD	CA7 0JJ	CA7 5AD	CA7 8AG	CA7 8DB	CA7 8NQ	CA8 9EG
CA5 6AF	CA7 0LU	CA7 5AE	CA7 8AH	CA7 8DD	CA8 1LB	CA8 9EH
CA5 6BJ	CA7 0LY	CA7 5DH	CA7 8AJ	CA7 8DG	CA8 1LD	CA8 9EN
CA5 6JD	CA7 1DE	CA7 5DJ	CA7 8AL	CA7 8DH	CA8 1LE	CA8 9HD
CA5 6JE	CA7 1DF	CA7 5DL	CA7 8AN	CA7 8DN	CA8 1LF	CA8 9HQ
CA5 6JF	CA7 1EW	CA7 5DN	CA7 8AQ	CA7 8DW	CA8 1LL	CA8 9JF
CA5 7EP	CA7 2DJ	CA7 5DP	CA7 8AR	CA7 8LJ	CA8 1LN	CA8 9JG
CA5 7ER	CA7 2DR	CA7 5DQ	CA7 8AS	CA7 8LL	CA8 1LT	CA8 9JH
CA5 7ES	CA7 2JR	CA7 5DR	CA7 8AT	CA7 8LN	CA8 1LU	CA8 9JL
CA5 7EW	CA7 2JX	CA7 5DS	CA7 8AU	CA7 8LU	CA8 1LW	CA8 9JN
CA5 7EX	CA7 2NG	CA7 5DT	CA7 8AX	CA7 8LW	CA8 9BS	CA8 9JQ
CA5 7HD	CA7 2NN	CA7 5DW	CA7 8AY	CA7 8LX	CA8 9BU	CA8 9LE
CA5 7HE	CA7 2NW	CA7 5EF	CA7 8BL	CA7 8LY	CA8 9BX	CA8 9LG
CA5 7HF	CA7 2PD	CA7 5EG	CA7 8BS	CA7 8LZ	CA8 9DA	CA8 9LH
CA5 7HG	CA7 2PL	CA7 5EH	CA7 8BT	CA7 8NA	CA8 9DB	CA8 9LQ
CA5 7HH	CA7 2PQ	CA7 5EN	CA7 8BU	CA7 8NB	CA8 9DD	CA8 9NF
CA5 7HJ	CA7 2PU	CA7 5ER	CA7 8BW	CA7 8ND	CA8 9DP	

Please note

1. The potential connection speed achievable at an individual property depends on a range of factors including the configuration of a property's physical connection to the telephone network, choice of equipment within the property and the service package selected from your internet service provider. It is strongly recommended that residents check with their chosen service provider or follow the provided link to the Openreach Line checker to confirm the potential speeds available to their property.

2. Superfast is defined as a download speed of greater than 24Mbps. Whilst a small number of connections (less than 10%) might be slightly below that, the vast majority are significantly above. In our deployment to date 80% are greater than 30Mbps and 65% are greater than 50Mbps.
3. This map is provided for illustrative purposes only and Cumbria County Council accepts no responsibility for this map being used as the basis of any commercial or personal investment.
4. This map outlines the expected works of the Connecting Cumbria Programme only and does not show services that may be available to areas commercially or via any other means.
5. This map is based on the best information currently available to Cumbria County Council and may change as information is refined or changed within the build programme. In particular any planned work or work in progress are subject to change without notice.

Archived Connecting Cumbria Q&A's relating to Contract 1 and Contract 2

What is Connecting Cumbria?

Connecting Cumbria is a partnership between Cumbria County Council and BT and aims to bring fibre broadband to as many residents, businesses and visitors as quickly as possible with the funds available.

The project is being funded by Broadband Delivery UK (BDUK), Cumbria County Council and BT.

Where will the funding be spent?

Funding associated with the Connecting Cumbria programme is predominantly spent in areas where there is no existing fibre broadband service. Our delivery partner, BT, advises of the structures which can be deployed within the current funding and in compliance with the guidelines of the Broadband Delivery UK national scheme. The selection of areas for upgrade is purely driven by the need to reach as many properties as possible within the limited programme funding.

Can you share any information on the contract with BT?

Please see links below to a redacted version of the Connecting Cumbria contract between Cumbria County Council and BT. Commercially sensitive information within the contract has been removed.

Lot 2.2 - Broadband Agreement^[2]

Schedule 1 - Definitions^[2]

Schedule 2 - Service Requirements^[2]

Schedule 3.1 - Contractor Solution^[2]

Schedule 3.2 Commercially Sensitive Information^[2]

Schedule 3.3 - Key Subcontractors^[2]

Schedule 3.4 - Key Personnel

Schedule 4.1 - Implementation

Schedule 4.2 - Existing Infrastructure

Schedule 5.1 - Milestone Payments and Claims Procedures

Schedule 5.2 - Wholesale Access Pricing

Schedule 5.3 - Project Model

Schedule 5.4 - Funding

Schedule 6.1 - Governance

Schedule 6.2 - Change Control Procedure

Schedule 6.3 - Dispute Resolution Procedure

Schedule 6.4 - Reports

Schedule 6.5 - Remedial Plan Process

Can I view a copy of the Broadband Delivery UK Delivery Framework?

The Broadband Delivery UK Broadband Delivery Framework can be viewed **here**.

Who will pay for the roll out of Superfast Broadband across Cumbria?

Phase 1 of the programme was funded by Cumbria County Council, European Regional Development Fund (ERDF), Broadband Delivery UK (BDUK) and BT.

Phase 2 of the programme is being funded by the Cumbria Local Enterprise Partnership, Broadband Delivery UK (BDUK) and BT.