



# Cleator Moor East & Frizington

## Electoral Division Profile 2015

## Overview of Electoral Division

Cleator Moor East & Frizington Electoral Division is a rural division which spans a large area of North East Copeland incorporating a small part of the Lake District National Park. It is home to three parish councils:

- Arlecdon & Frizington,
- Lamplugh,
- Ennerdale & Kinniside

The division also incorporates a small proportion of Wath Brow, an area within the boundaries of Cleator Moor Town Council. The nearest large urban area is Whitehaven.

Ennerdale water is the most westerly lake within the Lake District National Park; it is owned by United Utilities and managed jointly with United Utilities, the Forestry Commission and the National Park. The lake supplies water to the local area. The lake and valley is registered as a Site of Special Scientific Interest (SSSI).

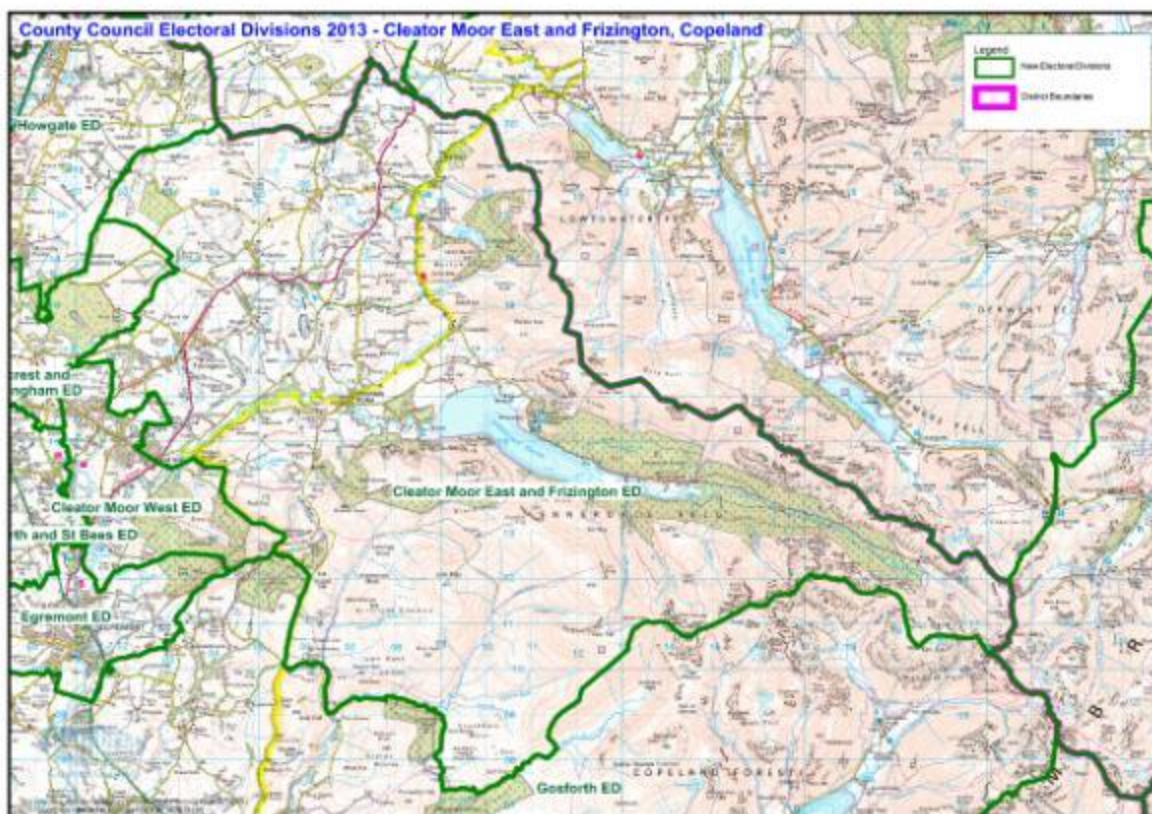
The Wainwright Coast to Coast walk and the Sea to Sea (C2C) cycle network both pass through the division via the disused railway which is now part of the National Cycle Network.

There are a number of local primary schools within the division but people have to travel outside of the area to go to Secondary School; choices include Whitehaven, Egremont, Cockermouth and Keswick. There is also a University Technical College (UTC) based at Lillyhall. Further Education is provided at each of the schools sixth forms or alternatively Lakes College West Cumbria at Lillyhall, Workington.

The largest employer in the area is the nuclear industry/Sellafield based at Seascale; within the division it would be Eskett Quarry, owned by Bardon Aggregates.

The area has a number of community organisations, Ennerdale was the fifth location within the UK to have a community owned public house.

## Map



A copy of this map can be found <http://www.cumbria.gov.uk/Election2013/maps.asp>

## Communities

The electoral division comprises of a number of villages and hamlets:

- Asby
- Arlecdon
- Ennerdale Bridge
- Ennerdale Lake
- Frizington
- Kirkland
- Lamplugh
- Parkside, Frizington
- Rowrah, Arlecdon
- Wath Brow, Cleator Moor
- Winder, Frizington

## Statistical Profile

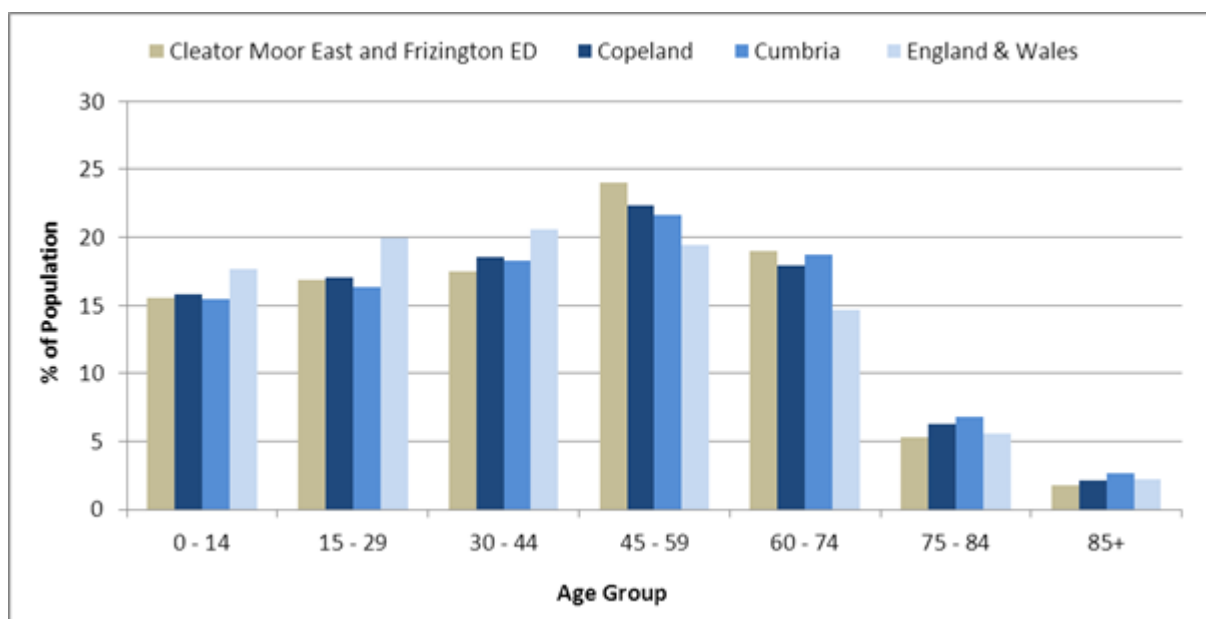
The 2011 Census estimated that the population of Cleator Moor East and Frizington Electoral Division (ED) was 5506 persons.

The table below presents estimated numbers of residents in Cleator Moor East and Frizington ED by age group:

	No. Persons by Age Group (Years)							
	All Ages	0 - 14	15 - 29	30 - 44	45 - 59	60 - 74	75 - 84	85+
Cleator Moor East and Frizington ED	5506	858	928	965	1322	1044	290	99

Source: Office for National Statistics, 2011 Census

The chart below compares the proportion of Cleator Moor East and Frizington ED's population within each age group with the proportion of the population within each age group across Copeland district, Cumbria and England & Wales:



Source: Office for National Statistics, 2011 Census

County Council Electoral Divisions cover large spatial areas and so division averages can mask variation between communities within the division. Furthermore, beyond Census data, there is little statistical information available for Electoral Divisions. However, most statistical agencies produce data for Electoral Wards. Therefore, there is a very wide range of statistical information available for Electoral Wards. Furthermore, as Electoral Wards are generally smaller than Electoral Divisions, statistics at this level provide more insight into variations between communities.

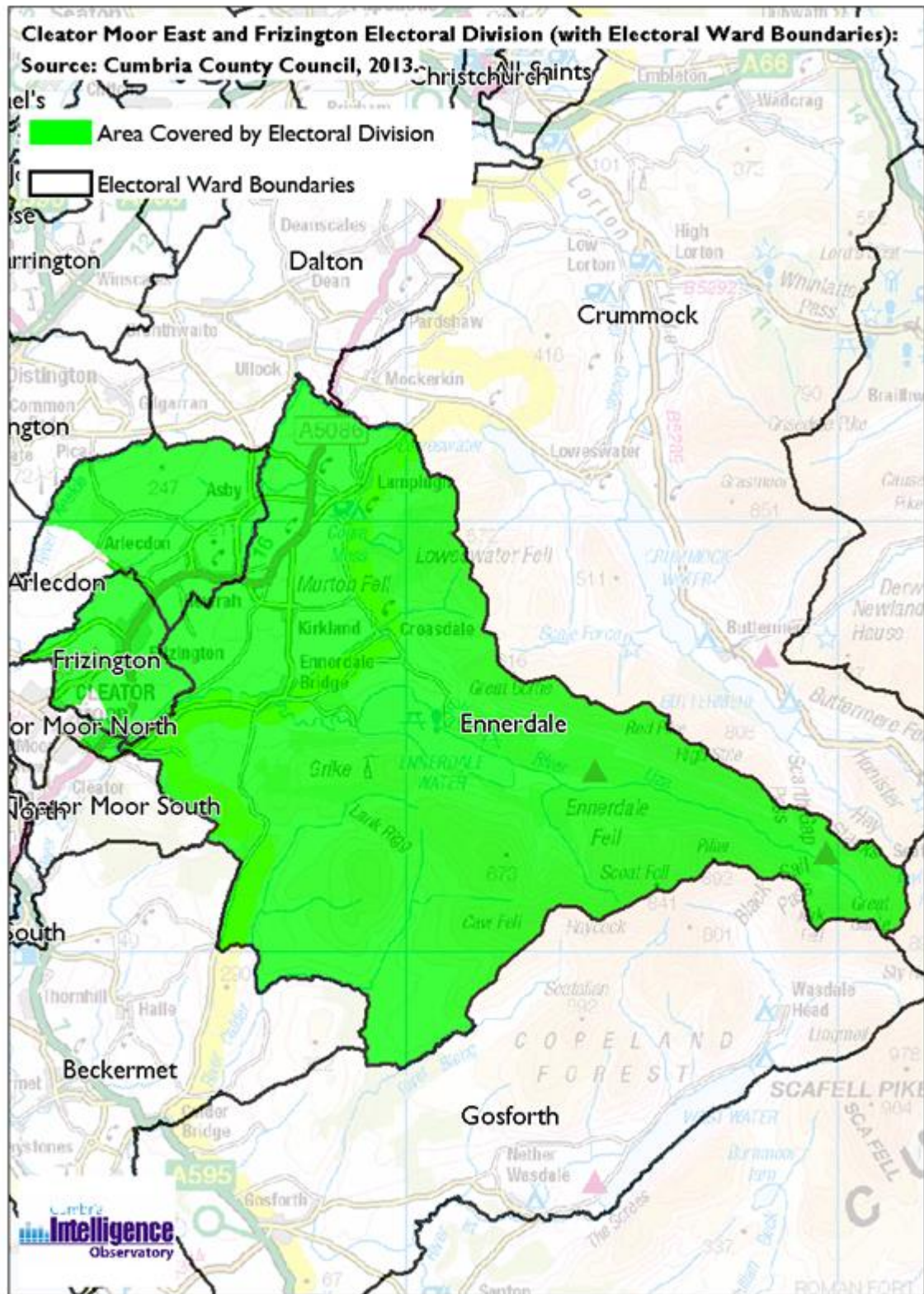
The table below identifies which Electoral Wards are fully or partially within the boundaries of Cleator Moor East and Frizington ED, and what proportion of Cleator Moor East and Frizington ED's population live within each ward:

Electoral Division	Wards in Electoral Division	% of Electoral Division's Population that fall within the Ward
Cleator Moor East and Frizington ED	Arlecdon	18.5
Cleator Moor East and Frizington ED	Cleator Moor North	18.0
Cleator Moor East and Frizington ED	Ennerdale	18.2
Cleator Moor East and Frizington ED	Frizington	45.3

Source: *Cumbria Intelligence Observatory, 2013*



The map below overlays Electoral Ward boundaries on to Cleator Moor East and Frizington ED's boundary:



(c) Crown Copyright and Database Right, 2013 Ordnance Survey Licence Number 100019596

The Cumbria Intelligence Observatory presents many Electoral Ward level statistics via the interactive 'Cumbria Atlas' tool. The Statistics provided within the Cumbria Atlas cover topics such as, but not limited to, population, housing, health, economy, poverty, ethnicity, language, and transport. The datasets within the Cumbria Atlas are regularly updated and expanded.

For simple step by step instructions to use the Cumbria Atlas to explore statistics for the wards within your Electoral Division, please visit the following web page:

<http://www.cumbria.gov.uk/eLibrary/view.asp?ID=56017>

The Information and Intelligence Team within Cumbria County Council are happy to talk you through using the Cumbria Atlas over the phone, or face to face. Training sessions can also be arranged for small groups.

To contact the team please call 01228 226309, or email [info@cumbriaobservatory.org.uk](mailto:info@cumbriaobservatory.org.uk)

## **Parks, Open Spaces and Leisure Facilities**

Arlecdon Rugby Pitch

Cleator Moor - Wath Brow RLFC Playing Fields

Cleator Moor – Wath Brow (Henbeck)

Cold Fell & Kinniside Common

Ennerdale – Village Park

Ennerdale Lake - Bleach Green/Bowness Knott, part of the Lake District National Park

Frizington - White Star Football Ground

Frizington Amateur Rugby League Football Club

Frizington Bowling Green

Lamplugh – Cogra Moss

National Cycle Network known locally as 'the line'

Play areas at Frizington, Arlecdon, Kirkland, Wath Brow and Ennerdale Bridge.

## **Active Community Organisations**

Asby

- Asby Community Group

Arlecdon

- Arlecdon and Lamplugh Community First Responders
- Arlecdon Amateur Rugby League Football Club
- Friends of Arlecdon School

#### Cleator Moor

- Wath Brow Hornets RLFC

#### Ennerdale:

- Wild Ennerdale Partners
- Ennerdale Community Recreation Group
- Youth Hostel Association – Black Sail
- Ennerdale Scouts
- Ennerdale Show, held annually at the Leaps, Kirkland
- Ennerdale Community Hub – Fox & Hounds Inn
- The Gather

#### Frizington:

- Frizington Community Group
- White Star Football and Social Club
- Phoenix Youth Project, Frizington Youth Club
- Frizington Craft Group

#### Lamplugh

- Lamplugh Village Hall
- Lamplugh WI
- Lamplugh Young Farmers
- Lamplugh Heritage Society

## Key Communication Networks

#### Whitehaven News

A weekly broadsheet newspaper for the local area of Whitehaven produced by CN Group, distributed on a Thursday <http://www.whitehavennews.co.uk>

#### News and Star

A daily evening newspaper for the local area of West Cumbria produced by CN Group <http://www.newsandstar.co.uk>

#### Cleator Moor Today (CM2D) Newsletter

CM2D is a monthly publication provided by Egremont Today, it is provided in a paper format also <http://egremont2day.com/cm2d/>

#### Whitehaven Guide

Produced quarterly by the Guide Media Group

#### Asby Community Matters Newsletter

Produced by Asby Community Group 01946 861515

#### School Newsletters



Several of the local primary schools provide regular newsletters for the parents and carers.

Lamplugh Village Hall Noticeboard  
<http://www.lamplughvillagehall.org.uk/>

BBC Radio Cumbria  
Local radio station produced by the BBC for Cumbria

CFM Radio  
Local radio station produced by the Bauer Media Group, covering Cumbria and Southwest Scotland

ITV News, Border region  
Programme news, weather and information provided by ITV Broadcasting Limited for the England/Scotland border region, covering the majority of Cumbria, Dumfries and Galloway, the Scottish Borders and parts of Northumberland.

<http://www.itv.com/news/border/story/2013-10-11/get-in-touch/>

BBC News – Look North (North East & Cumbria)  
BBC's nightly regional news programme for the North East of England and Cumbria County Council <http://www.bbc.co.uk/programmes/b0070g1d/faq>

## Community Assets

### Arlecdon

- Adams Hall
- Arlecdon Primary School
- St Michaels Church Arlecdon

### Ennerdale Bridge/Lake

- Ennerdale & Kinniside Primary
- Ennerdale Scout Centre
- St Mary's Church
- Fox and Hounds Community Pub
- The Gather

### Kirkland

- Kirkland Mission Church
- Lamplugh CE School, Kirkland

### Lamplugh

- St Michaels Church
- Village Hall

### Frizington

- Frizington Library
- Frizington Nursery School
- Frizington Primary School
- Frizington Fire Station
- Frizington Youth Club
- Parish Changing Rooms
- Surestart Childrens Centre
- St Johns Methodist Church
- St Josephs CE School
- St Josephs church and church hall
- Bowls Club
- St Pauls and the Lingla Centre
- White Star Football and Social Club
- Veterans Social Club

## Local Cumbria County Council Service Hubs

Electoral Division	Cleator Moor East and Frizington ED
LA Care Homes	0
Non LA Care Homes	1
Extra Care Housing	0
Primary Schools	5
Secondary Schools	0
Adult Education Centres	0
Childrens Centres	0
Family Centres	0
Cumbria Outdoors	0
Hospitals	0
Doctors Surgeries	1
Libraries	1
Book Drops	1
Archives Centres	0
Registration Offices	0
Local Links	0
Community Development Centres	1
Credit Unions	0
CCC Grant Funded or Directly Operated Swimming Pools	0
Highways Depots	0
Fleet Workshops	0
Waste Treatment Plants	0
Household Waste Recycling Centres	1
Fire Stations	1
<b>TOTAL</b>	<b>12</b>

## Community Engagement

Cumbria County Council's Local Committee for Copeland Grants Panel meets quarterly to consider grant applications from constituted non-profit making groups whose project benefits Copeland communities.

Issue based meetings are held in liaison with the local County Councillors to discuss community concerns.

## Key Community Contacts

### Arthur Lamb, Councillor for Cleator Moor East & Frizington

- Address: Sunningdale, Distington, Cumbria, CA14 5XP
- Phone:
- Mobile:
- Email: [ArthurWilliam.Lamb@cumbria.gov.uk](mailto:ArthurWilliam.Lamb@cumbria.gov.uk)

### Cumbria County Council, Copeland Development Team

- Address: Cleator Moor Library, Market Square, Cleator Moor, CA25 5AP
- Phone: 01946 505020
- Email: [gillian.elliott@cumbria.gov.uk](mailto:gillian.elliott@cumbria.gov.uk)
- Web: [www.cumbria.gov.uk](http://www.cumbria.gov.uk)

### Copeland Borough Council

- Address: Customer Services, The Market Hall, Market Place, Whitehaven, CA28 7JG
- Phone: 01946 598300
- Email: [info@copeland.gov.uk](mailto:info@copeland.gov.uk)
- Web: [www.copeland.gov.uk](http://www.copeland.gov.uk)

### Arlecdon & Frizington Parish Council

- Clerk: Mrs GA Everett
- Address: Ain-Garth, Main Street, Frizington, Cumbria, CA26 3PQ
- Phone: 01946 816723
- Email: [everettga@sky.com](mailto:everettga@sky.com)

### Laplugh Parish Council

- Clerk: Mr J Sloan
- Address: High Mill Cottage, High Lorton, Cockermouth, CA13 9UB
- Phone: 01900 85833
- Email: [john\\_sloan05@tiscali.co.uk](mailto:john_sloan05@tiscali.co.uk)

### Ennerdale & Kinniside Parish Council

- Clerk: Mrs Susan Denham-Smith
- Address: Routen Farm Cottage, Ennerdale, Cleator, Cumbria CA23 3AU
- Phone: 01946 861270
- Email: [ennerdaleclerk@btinternet.com](mailto:ennerdaleclerk@btinternet.com)
- Web: <http://www.eandkpc.co.uk>

