

CUMBRIA LEARNING DISABILITY PARTNERSHIP BOARD

REPORT

FUTURE OF SUB GROUPS

At the Board meeting on 14 December 2011, the members were asked to check the future of the Board and its sub groups.

Each sub group has been asked to report to the Board about:-

- Where the sub group is at, since they started? Is there a change in its function?
- What is their future plan? What are their actions for 2012
- Is there a need for the group to continue?

This is what each group had to say.

Employment

This group has agreed that this sub group should continue but will review its Terms of Reference in order to make sure that it focuses on the correct work streams.

In view of the current framework tender for employment support, there will be important work to be done to look at an appropriate pathway to be in place for people who wish to access support to move into employment.

The group would also like to continue:

- Monitoring the numbers of people who move into employment
- Developing new opportunities for work and training
- Looking at the impact of changes to work related benefits

Health and Wellbeing

This sub group voted to continue as they

- Provides a crucial link to GP practices and hospital organisations across the North West
- Communicate to all health organisations in Cumbria and who sit around the table at the same time
- Action issues that the Health Self Assessment Framework highlights
- Provide a good source of information for carer, service user and provider groups
- Provide information from NHS intelligence that assists the commissioners in strategically planning services for the future.

This sub group is planning to review its action plan and its Terms of Reference with adding a change to have task and finish groups support the sub group with Health Self Assessment Framework actions

Housing

This sub group has not met since it produced the Housing Guide.

Person Centred Approach

This sub group last meeting was on 2 February and as not all members attended, no group decision could be made for the report.

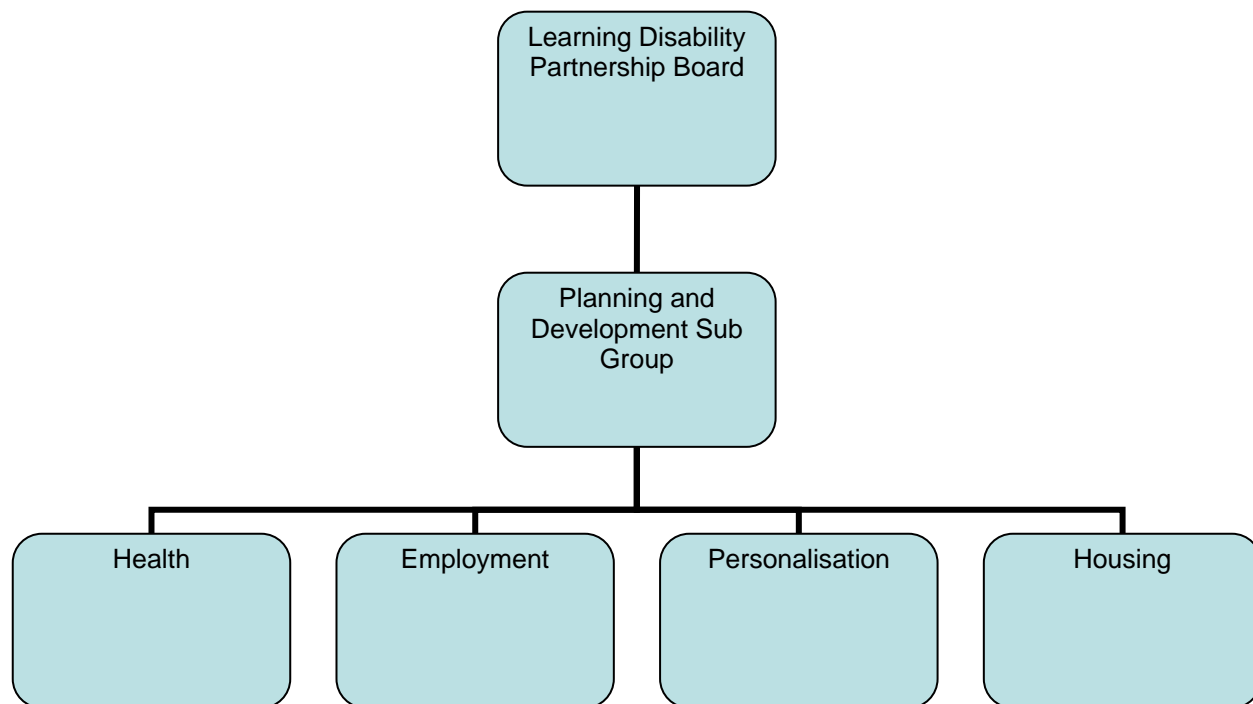
The group has produced a guide to person centred planning and it can be found on the Partnership Board's website. The group has also been looking at other ways to help people who might be thinking of having their own person centred plan.

There are concerns about the future of this group as the number of members has fallen and some representatives are not attending regularly. There has been no representation from practitioners, service users or advocates for some time. Another meeting will be held on 9 May to consider whether the group should continue and who would lead it.

Planning and Development

This sub group agreed that the Planning and Development Group needs to take on the role of the Board to monitor the tasks of the sub groups, ensuring that tasks requested by the Board are being completed.

When the Board receives issues that a sub group can be tasked with, the Planning and Development sub group will check that the task is being completed within the time requested.



The Next Step

The Board members are asked to decide if the each sub group should continue or if they will ask the sub group to close.