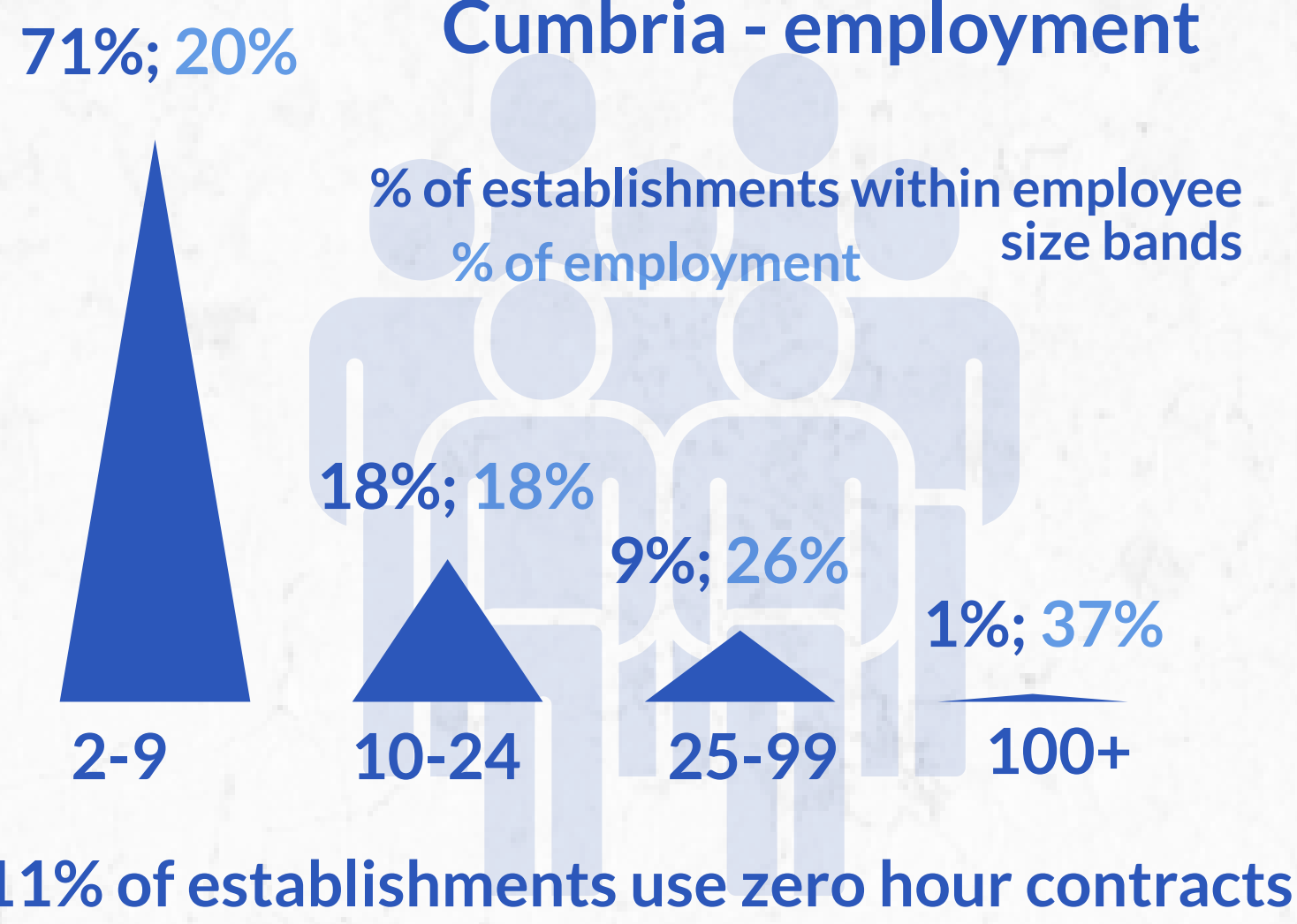


Cumbria Business Survey 2020

18% of establishments located within the LDNP; 58% within rural areas

Cumbria - employment



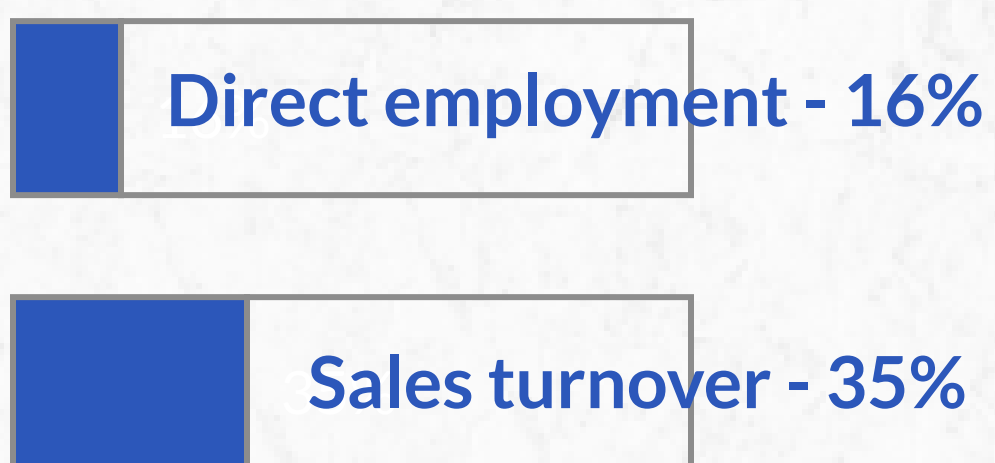
markets



% of establishments across Cumbria



Growth in the 12 months up to Autumn 2019



31% expect to seek advice/support in the next 12 months

about... £

19% re: accessing grants; 15% accessing borrowing

12% re: business planning

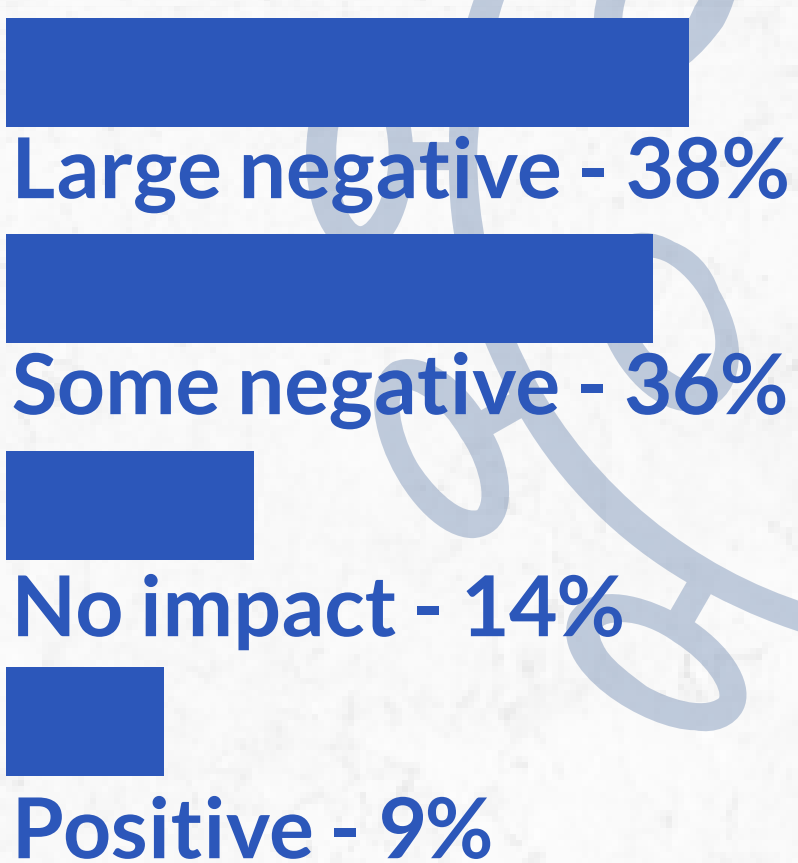
10% re: COVID-19 issues

COVID-19

71% reported plans negatively impacted by COVID-19

93%

Financial impact of COVID-19



concerns related to COVID-19

Barriers/concerns: 72% uncertainty; 67% trading restrictions; 64% fall in demand; 57% supply chain issues

31% concerns are related to UK's EU exit

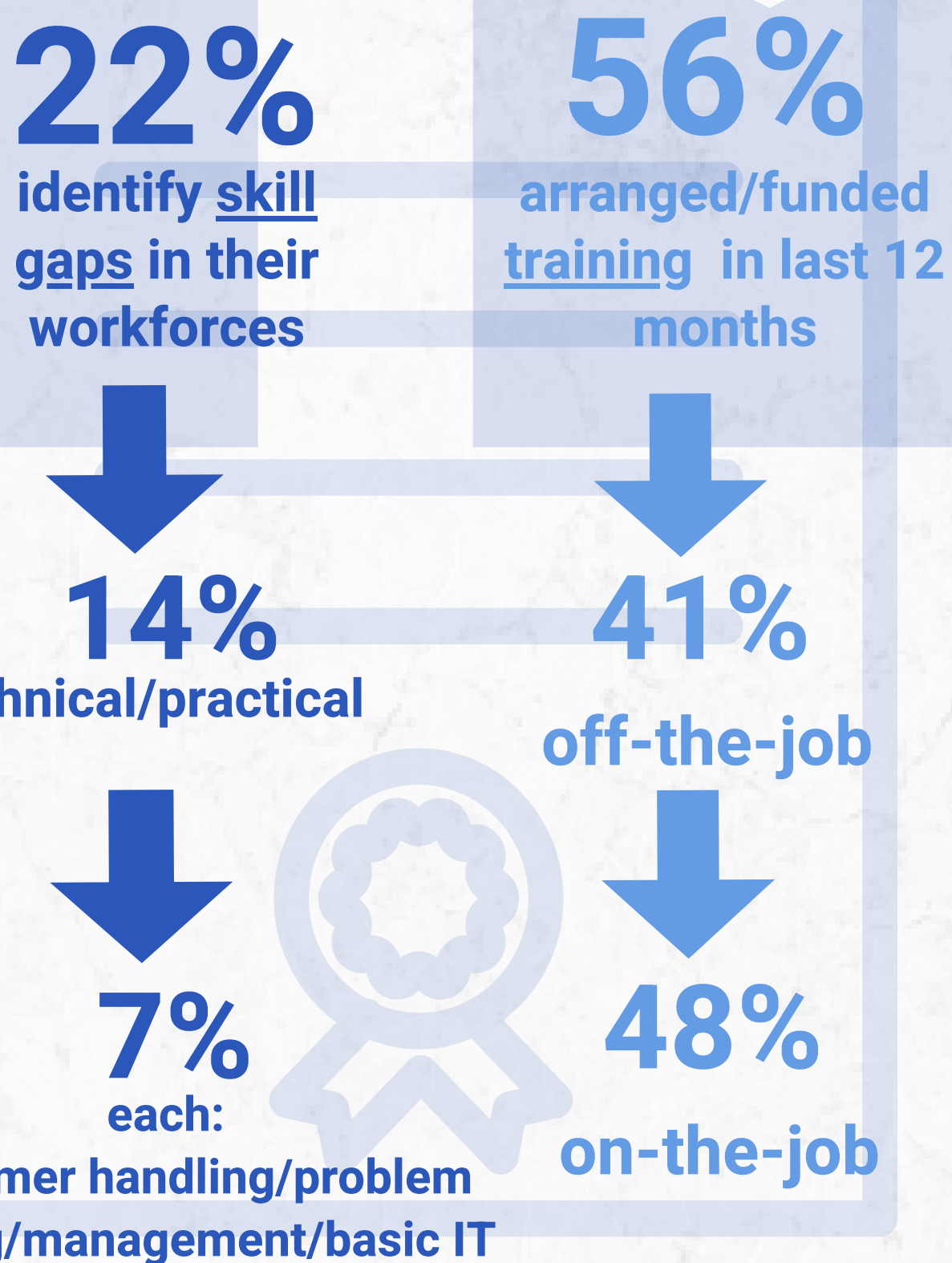
Expect a negative impact from EU exit:

36% short term

25% longer term

46% concerns are related to transport

skills

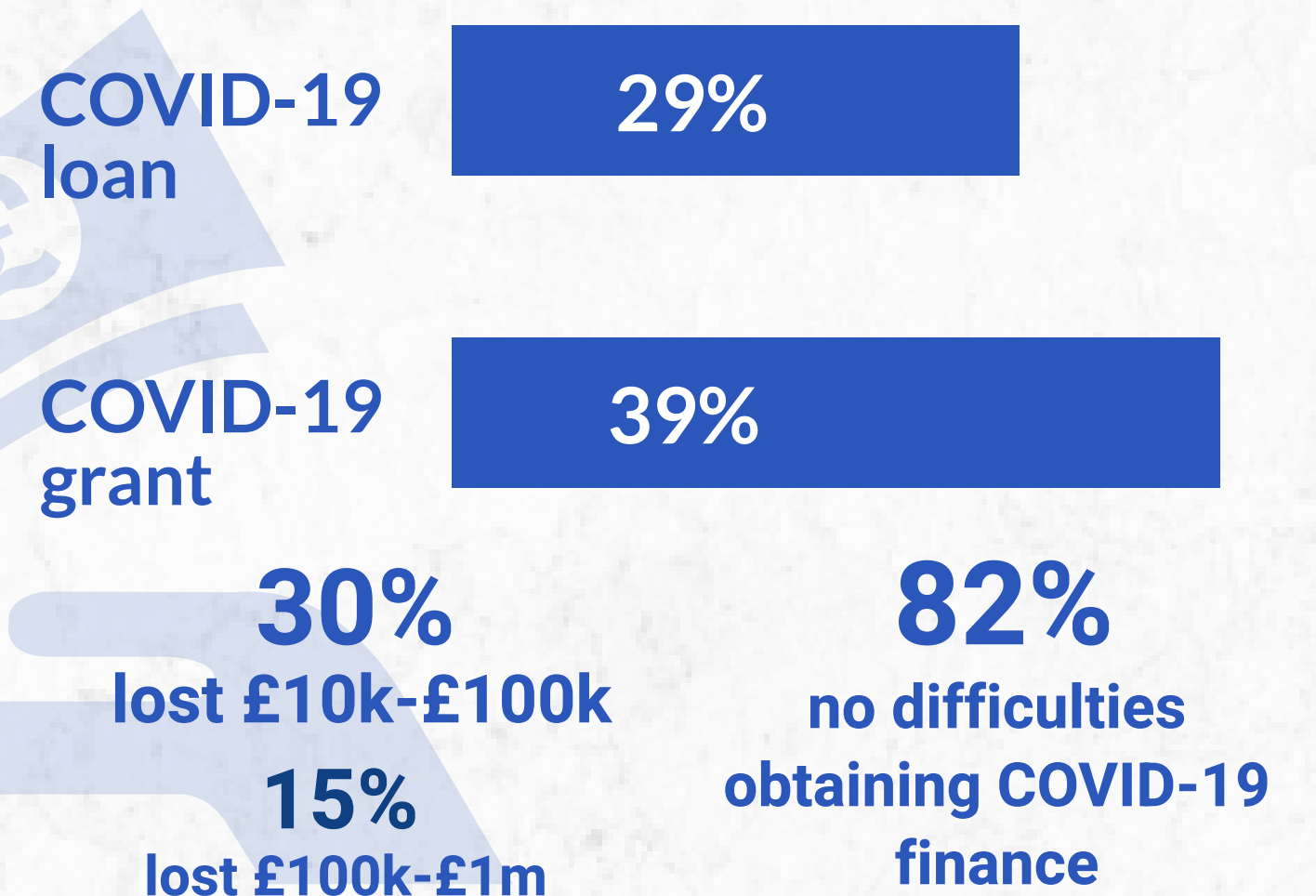
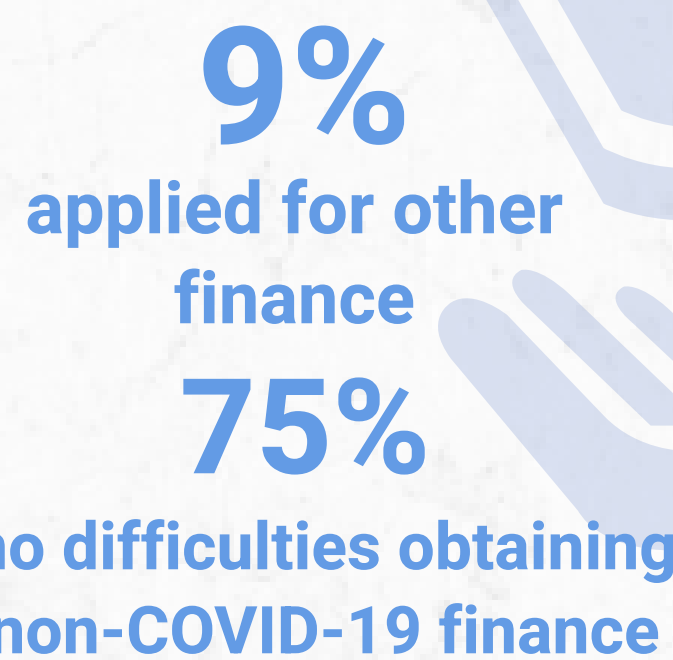


online trading

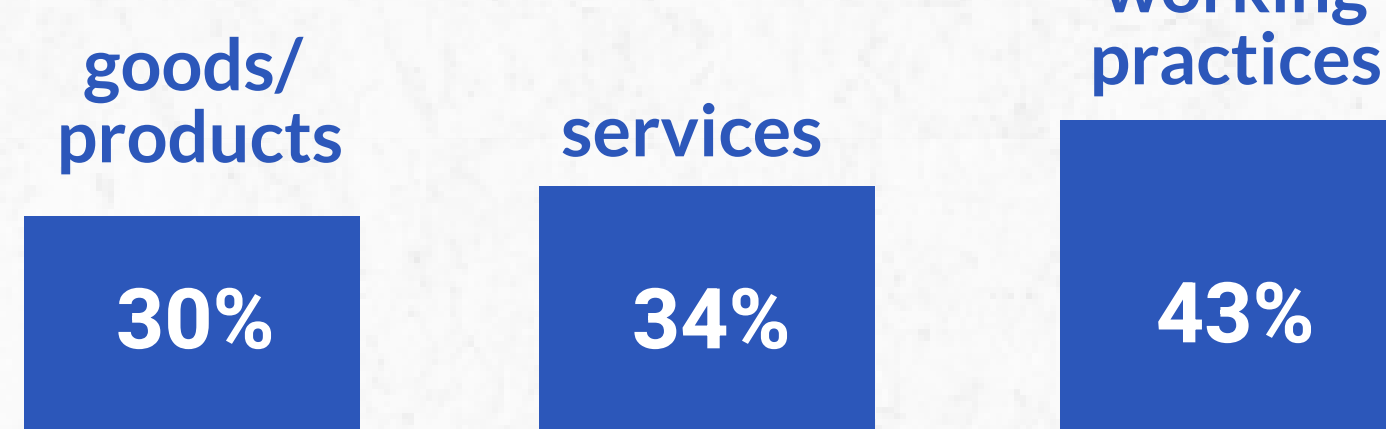


finance

applications in the last 12 months...



introduced/improved in the last 3 years...

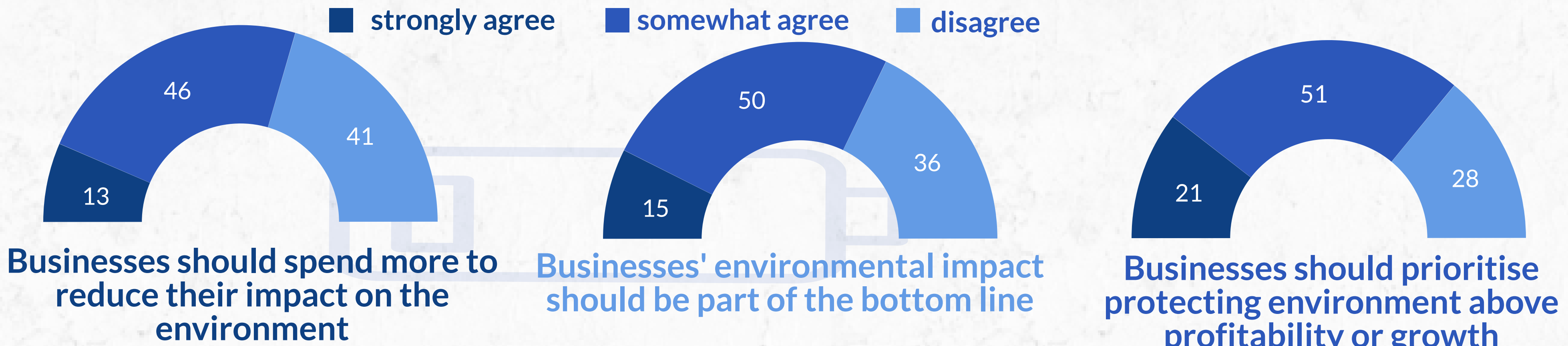


innovation

68% plan any innovation in next three years

low carbon

70% have taken steps to reduce carbon footprint in last year



Telephone interviews conducted with private and voluntary/non-profit sector employers between October to December 2020 - site level information. Employer population data source: IDBR August 2020

1703 surveys completed

Survey commissioned and managed by Cumbria County Council, supported by Cumbria LEP, the 6 district councils in Cumbria and Cumbria Chamber of Commerce

For more information contact: ginny.murphy@cumbria.gov.uk

